

Lyric

Don Giovanni

Mozart

Capriccio

Richard Strauss

Il Trovatore

Verdi

Porgy and Bess

Gershwin

Anna Bolena

Donizetti

Tosca

Puccini

Tannhäuser

Wagner

The Passenger

Weinberg

Carousel

Rodgers &
Hammerstein



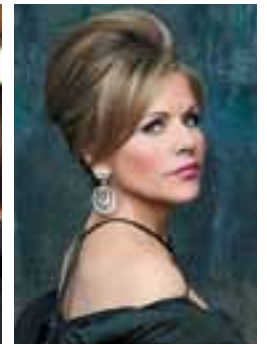
2014 / 2015



Welcome to Lyric Opera of Chicago's Diamond Anniversary Season!

- 2 Season Performances
- 18 Lyric Artists
- 20 Special Events
- 26 Subscription Series
- 28 Pricing and Seating Chart
- 30 Subscriber Benefits
- 33 Calendar

Join us in celebrating with a range of special events including a glorious 60th Anniversary Concert and Diamond Ball, Lyric's famed Wine Auction, and the Opening Night Performance of *Don Giovanni*. For more information about how you can be involved this season, please see page 24.



Greetings!

Welcome to Lyric Opera of Chicago's Diamond Anniversary season. Our company has a great 60-year tradition of excellence made possible by passionate and committed opera lovers like you.

We are fortunate that among our audience, we have large numbers of subscribers and individual ticket buyers who have been coming to Lyric for many years and may also attend opera all over the world. We're also lucky to have scores of fans who see and hear opera *only* at Lyric. It's our responsibility to give our audiences a vibrant, dynamic, world-class season that will excite experienced opera goers and newcomers alike. The finest artists in the world, our exceptional orchestra and chorus, breadth of repertoire, and a variety of musical and production styles are all part of the mix.

That's why we are particularly enthusiastic about this 60th Anniversary season. Enjoy evergreen favorites like *Don Giovanni*, *Tosca*, and *Tannhäuser* in productions you've never seen before; experience rarely performed gems like *Anna Bolena* and *Capriccio* that will make you wonder where these terrific operas have been all your life; leave the theater humming the great music that has made *Il Trovatore* and *Porgy and Bess* so famous; and be sure you're there for *The Passenger*, a riveting and recently rediscovered 20th-century masterpiece that's about the triumph of humanity against impossible odds.

We are also thrilled to offer you many special events: a Lyric world premiere of a new mariachi opera, *El Pasado Nunca Se Termina (The Past is Never Finished)*, a dazzling 60th Anniversary Concert and Diamond Ball, a recital by the phenomenal pianist Lang Lang, and two great Rodgers and Hammerstein musicals: *The Sound of Music* this April and May (the final entry in our 2013/14 season) and *Carousel* in the spring of 2015, the grand finale to our Diamond Anniversary.

So come celebrate with us! We promise you a wonderful season.

Anthony Freud
General Director

Sir Andrew Davis
Music Director

Renée Fleming
Creative Consultant

Don Giovanni

Mozart

September 27–October 29
In Italian with projected
English texts

New Production

Mariusz Kwiecien: “His Don is pure, distilled menace... A force of nature, he doesn’t just seduce women, he mesmerizes them.” *LOS ANGELES TIMES*

Marina Rebeka thrilled audiences in Lyric’s *La Traviata* and her Met debut as Donna Anna was a triumph. “She’s a major star.” *BLOOMBERG NEWS*

As Elvira, **Ana María Martínez** “showed off her considerable comedic and dramatic abilities...and the fiery brilliance of her singing.” *OPERA NEWS*

As the wily Leporello, **Kyle Ketelsen** (Lyric’s sexy Escamillo in *Carmen*) combines “a gorgeous voice with wry wit.” *DETROIT NEWS*

Bad boys finish last.

He’s selfish. He’s arrogant. He’s dangerous. With a list of conquests longer than a phonebook, Don Giovanni travels the world, snaring princesses and peasant girls alike. Literally thousands succumb.

This time, his victim is the virtuous Donna Anna. And when her father tries to save her, the Don murders him. But the lecherous killer has finally gone too far—and his victims want revenge. Dark comedy blends seamlessly with biting social commentary in a rip-roaring story that tantalizes with its ambiguities. Sir Andrew Davis is on the podium as famed director Robert Falls and a sparkling cast open the season with Mozart’s masterpiece—which George Bernard Shaw called “the greatest opera ever written.”

New Lyric Opera production generously made possible by Mr. & Mrs. Dietrich M. Gross, the Abbott Fund, Randy L. and Melvin R. Berlin, Mr. and Mrs. Ronald J. Gidwitz, The Negaunee Foundation, and Sylvia Neil and Daniel Fischel.

Don Giovanni
Mariusz Kwiecien
Donna Anna
Marina Rebeka
Donna Elvira
Ana María Martínez
Leporello
Kyle Ketelsen
Zerlina
Andriana Chuchman°
Don Ottavio
Antonio Poli
Masetto
Michael Sumuel*
Commendatore
Andrea Silvestrelli

Conductor
Sir Andrew Davis
Director
Robert Falls
Set Designer
Walt Spangler*
Costume Designer
Ana Kuzmanic*
Lighting Designer
Duane Schuler
Chorus Master
Michael Black

*Lyric debut
°Alumna, Ryan Opera Center



Capriccio

Richard Strauss

October 6–28
In German with projected
English texts

“Renée Fleming’s characterization is remarkable...there is something erotic about the exaltation she feels at being a muse to the creative figures in her life.” *THE GUARDIAN*

What a luxury to have **Anne Sofie von Otter** as Clairon. “She wrings emotion from each syllable of the lyrics that sound life-changing when she sings them.” *FINANCIAL TIMES*

“**Bo Skovhus** is marvelous as the libidinous if prosaic Count... and **Sir Andrew Davis’s** conducting is passionate, lyrical, and admirably free from self-indulgence.” *THE GUARDIAN*

The poet or the musician—which one will she choose?

She’s one of the most glamorous and gifted singers of all time, he’s one of the world’s finest conductors—and both of them are supreme interpreters of Strauss. **Renée Fleming** and **Sir Andrew Davis** make magic in this deliciously elegant masterwork.

The beautiful Countess has a difficult choice to make: Will it be the amorous poet or the ardent musician whom she ultimately decides to love?

In this sophisticated drawing-room comedy, the Countess and her guests are trying to decide whether it’s the words or the music that triumph in creating great art. The theater director thinks it’s a silly question (he just wants to give the audience a good show!), the Count doesn’t care (he just wants an affair with the actress.). And so it goes in Strauss’s masterpiece, illuminated by some of his most lushly sensual music.

Lyric Opera presentation generously made possible by an **Anonymous Donor**, **Margot and Josef Lakonishok**, and **Mr. and Mrs. J. Thomas Hurvis**.

Countess
Renée Fleming
Clairon
Anne Sofie von Otter
Count
Bo Skovhus
Flamand
William Burden
Olivier
Audun Iversen*
La Roche
Peter Rose

Conductor
Sir Andrew Davis
Original Director
John Cox
Revival Director
Peter McClintock
Set Designer
Mauro Pagano
**Costume Designer
and Interior Decor**
Robert Perdziola
Lighting Designer
Duane Schuler

*Lyric debut

Production owned by
the Metropolitan Opera.



RENEE FLEMING AS THE COUNTESS. PH. KEN HOWARD (METROPOLITAN OPERA)

Il Trovatore

Verdi

October 27–November 29
In Italian with projected
English texts

Yonghoon Lee portrays the courageous Manrico.
Delivering visceral singing with a gorgeous tenor voice,
“all the buzz about him is justified.” *THE NEW YORK TIMES*

Amber Wagner: Her voice is voluptuous. Her talent
is limitless. In demand around the world for major dramatic
soprano roles, this Ryan Center alumna “is destined for
greatness.” *CHICAGO SUN-TIMES*

Stephanie Blythe is a “gripping Azucena...using her
dramatically exciting instrument to convey the Gypsy’s
emotional trauma as she veers between anguish and anger.”
SAN FRANCISCO CHRONICLE

Quinn Kelsey is “unforgettable...power, scope, and theatrical
flair so robust and forceful as to put everyone else in the
shade.” *SAN FRANCISCO CHRONICLE*

Primal passions. Potent music.

The troubadour Manrico and Count di Luna are bitter enemies. But
in a twist of fate, they’re both in love with Leonora—and they’re brothers
without knowing it.

Emotions boil in an action-packed story that includes babies switched
at birth, kidnapping, mistaken identity, poisoning, civil strife, witches burned
at the stake, and a noblewoman who offers herself to a man she hates,
to save the man she loves.

High drama and some of the most famous music Verdi ever composed—
including the “Anvil Chorus”!

“*Il Trovatore* is all about excitement—and this David McVicar show
delivers it!” *THE WALL STREET JOURNAL*

Lyric Opera revival generously made possible by an **Anonymous Donor**,
Julie and Roger Baskes, the **Mazza Foundation**, and **Robert S. and Susan E. Morrison**.

Manrico
Yonghoon Lee
Leonora
Amber Wagner[°]
Azucena
Stephanie Blythe
Count di Luna
Quinn Kelsey[°]
Ferrando
Andrea Silvestrelli

Conductor
Asher Fisch
Original Director
Sir David McVicar
**Revival Director
and Choreographer**
Leah Hausman
Set Designer
Charles Edwards
Costume Designer
Brigitte Reiffenstuel
Lighting Designer
Jennifer Tipton
Chorus Master
Michael Black

[°] Alumni, Ryan Opera Center

Coproduction of Lyric Opera of
Chicago, the Metropolitan Opera,
and San Francisco Opera Association.



STEPHANIE BLYTHE AS AZUCENA. PH. TERENCE MCCARTHY (SAN FRANCISCO OPERA)

Porgy and Bess Gershwin

November 17–December 20
In English with projected
English texts

Eric Owens: From the Met to Covent Garden, this Grammy Award-winning star “is a powerhouse baritone.” (THE NEW YORK TIMES) In his grandiose performance “the famous melodies written for Porgy take wing and soar.” CONCERTONET.COM

Gorgeous American soprano **Adina Aaron** is making a splash in Europe. “The voice has softness, heat, and mystery.” DER WESTEN, GERMANY

With his “exuberant, masculine voice” (WASHINGTON TIMES) baritone **Eric Greene** will be a magnetic Crown, the brutal man who has “that certain something” women can’t resist.

Jermaine Smith frequently steals the show as the oily drug peddler Sportin’ Life, “singing and dancing with enormous panache.” CHICAGO SUN-TIMES

Redemption is hard to find.

Porgy and Bess is the great American opera—bursting with iconic songs that have moved easily into the worlds of jazz and pop, becoming hits again for generation after generation. Six years after its triumphant Lyric debut, Francesco Zambello’s big, beautiful, epic production returns with its finely etched portrait of life in Catfish Row—a vibrant but impoverished African-American community on the South Carolina coast.

There’s Crown, the brutish thug; Sportin’ Life, the smooth-talking drug peddler; Bess, the good-time girl who finally finds love with the good-hearted Porgy; and Porgy himself, the lame beggar who’s the strongest of them all—an unquenchable spirit who’ll stop at nothing to reclaim the woman he loves.

Lyric Opera presentation generously made possible by The Elizabeth Morse Genius Charitable Trust, The Elizabeth Morse Charitable Trust, and Roberta L. and Robert J. Washlow with additional support from the National Endowment for the Arts.

Porgy
Eric Owens
Bess
Adina Aaron*
Sportin’ Life
Jermaine Smith
Crown
Eric Greene
Clara
Angel Blue*
Serena
Karen Slack*
Jake
Norman Garrett*
Maria
Gwendolyn Brown°

Conductor
Ward Stare
Director
Francesca Zambello
Set Designer
Peter J. Davison
Costume Designer
Paul Tazewell
Lighting Designer
Mark McCullough
Chorus Master
Michael Black
Choreographer
Denni Sayers

*Lyric debut
°Alumna, Ryan Opera Center

Production owned by
Washington National Opera.



#LyricPorgy

312.827.5600

lyricopera.org/porgy

Anna Bolena

Donizetti

December 6–January 16
In Italian with projected
English texts

New Production

“Dazzling **Sondra Radvanovsky** tears into the taxing role of the Queen...sending an electric current through the music and effectively conveying Anne’s pride and vulnerability.”

BALTIMORE SUN

Dmitri Hvorostovsky won the hugely prestigious BBC Cardiff Singer of the World competition...and so did **Jamie Barton**. “With her plush, impassioned voice, she’s on opera’s fast track!”

CHICAGO TRIBUNE

King Henry must be menacing, manipulative, and suave. **John Relyea’s** “magnificent black velvet cloak of a voice wraps itself around everything in sight.”

THE TIMES, LONDON

This dashing young tenor takes on the role of Percy in his Lyric debut! “**Bryan Hymel** has the best high notes in the business.”

PHILADELPHIA INQUIRER

Doomed queen...tour-de-force drama!

Anne Boleyn may be Queen of England, but she doesn’t stand a chance. Henry VIII wants her gone—with Jane Seymour taking her place on the throne and in his bed. And Henry’s minions do the dirty work, finding “proof” of Anne’s infidelities.

Donizetti exploits all of the glories of the human voice in this *bel canto* gem and trailblazes with a theatricality that hadn’t been seen in opera before. Listen to vocal fireworks and watch one of opera’s most gripping confrontations: the Queen rages when she finally discovers that Jane is her arch rival, and Jane is haunted by guilt—desperate to marry the King, yet knowing that she’s the reason he’ll send Anne to the scaffold.

Maria Callas and Joan Sutherland made this opera famous—and today Sondra Radvanovsky makes it her own.

Lyric Opera coproduction generously made possible by **The Monument Trust** and the **Donna Van Eekeren Foundation**.

Anne Boleyn
Sondra Radvanovsky

Jane Seymour
Jamie Barton

Percy
Bryan Hymel*

Henry VIII
John Relyea

Smeton
Kelley O’Connor

Conductor
Patrick Summers*

Director
Kevin Newbury*

Set Designer
Neil Patel*

Costume Designer
Jessica Jahn*

Lighting Designer
D. M. Wood*

Chorus Master
Michael Black

*Lyric debut

Coproduction of
Lyric Opera of Chicago
and Minnesota Opera.



Tosca

Puccini

January 24–March 14
In Italian with projected
English texts

New Production

Critics raved when this Russian star sang Lady Macbeth with Riccardo Muti and the CSO. “**Tatiana Serjan** is flat-out thrilling...exuding the temperament of a lioness.”

CHICAGOONTHEAISLE.COM

Hui He burst onto the international scene as Tosca at La Scala (2006) and took Chicago by storm as Aida in 2012. “She’s a showstopper...delivering genuine thrills.” CHICAGO TRIBUNE

Perfectly cast as Cavaradossi, **Misha Didyk** “wields a bright sword of a tenor,” (THE NEW YORK TIMES) and Spain’s **Jorge de Leon** “has a silvery voice that’s a gift of nature.”

OPERA NEWS

Evgeny Nikitin will mesmerize as Scarpia: “He schemes and snarls with his chilling bass-baritone.” NEW YORK POST

Mark Delavan: “With his half-divine, half-human voice, the range of emotions he can communicate appears limitless.”

SAN FRANCISCO CHRONICLE

Living for art...dying for love.

A fiery diva, the rebel artist who claims her heart, and the sadistic police chief before whom all Rome trembles—for more than a hundred years, audiences have watched and listened spellbound as the cat-and-mouse game between Tosca and Scarpia plays to its deadly conclusion. Will she submit to his lust to save her lover from the firing squad?

Find out as these two outstanding casts bring you Puccini at his most theatrical and passionate.

Lyric Opera coproduction generously made possible by the Harris Family Foundation, Marlys A. Beider, and Stefan Edlis and Gael Neeson.

Tosca
Tatiana Serjan* JAN 24–FEB 5
Hui He FEB 27–MAR 14

Cavaradossi
Misha Didyk* JAN 24–FEB 5
Jorge de Leon* FEB 27–MAR 14

Scarpia
Evgeny Nikitin* JAN 24–FEB 5
Mark Delavan FEB 27–MAR 14

Conductor
Dmitri Jurowski*

Director
John Caird

Designer
Bunny Christie*

Lighting Designer
Duane Schuler

Chorus Master
Michael Black

*Lyric debut

Coproduction of
Lyric Opera of Chicago and
Houston Grand Opera.



Tannhäuser Wagner

February 9–March 6
In German with projected
English texts

New-to-Chicago Production

Today's most lauded Tannhäuser, **Johan Botha** "is a marvel" (THE GUARDIAN). His command of this killer role "is almost unbelievable." CONCERTONET.COM

Expect an incandescent Elisabeth from **Amber Wagner**, "with her luscious outpouring of sound and a voice that reminds me of Jessye Norman in her prime." CHICAGO TRIBUNE

Michaela Schuster (a show-stopping villainess in Lyric's 2011 *Lohengrin*) "is superb as the seductive Venus." THE TELEGRAPH

Riveting as Oppenheimer in Lyric's *Doctor Atomic*, **Gerald Finley** is acclaimed on major stages everywhere because "he is extraordinary both vocally and dramatically." THE GUARDIAN

John Relyea: "His sonorous bass-baritone is beautiful, and he gives audiences performances of hair-raising vocal and emotional power." THE SCOTSMAN

Only gods can live in endless bliss.

Tannhäuser, minstrel and renegade, is lured into the erotic realm of the love goddess Venus. There he luxuriates in lust and a host of sinful pleasures. But finally it's all too much. He longs to return home, and does—to friends, rules of Christian conduct, and most of all, to Elisabeth, the warm but chaste young woman who loves him, despite the grief he's caused. Desperate for absolution, Tannhäuser joins his fellow pilgrims, journeying to Rome to ask forgiveness for his sins. But once you've been to the Venusberg, you can never truly leave.

Sir Andrew Davis is on the podium for this monumental vocal, choral, and orchestral event.

Savor the famous overture, the frenzied bacchanal with its sexy ballet, the sublime "Song to the Evening Star," the stirring "Pilgrims' Chorus," and more, in a remarkable work that transfixes audiences with both its sensuality and its majestic power.

Lyric Opera presentation generously made possible by an **Anonymous Donor** and the **NIB Foundation**.

Tannhäuser
Johan Botha
Elisabeth
Amber Wagner[°]
Venus
Michaela Schuster
Wolfram
Gerald Finley
Landgraf
John Relyea

Conductor
Sir Andrew Davis
Director
Tim Albery*
Set Designer
Michael Levine
Costume Designer
Jon Morrell*
Lighting Designer
David Finn
Chorus Master
Michael Black
Choreographer
Jasmin Vardimon*

*Lyric debut
°Alumna, Ryan Opera Center

Production owned by
Royal Opera House, Covent Garden.



The Passenger Weinberg

February 24–March 15
In Russian, German,
Polish, French, Yiddish,
Greek, and English with
projected English texts

Lyric Opera Premiere

“A brilliant actress with a rich resonant soprano”
(FINANCIAL TIMES), **Amanda Majeski** is Marta.

Daveda Karanas, with a voice of “clear silver and dark
smoke” (CHICAGO SUN-TIMES) is Liese, and **Brandon Jovanovich**,
“a world-class actor with a thrilling voice” (THE TIMES, LONDON),
is Walter.

The celebrated Lyric Opera Chorus has a major role in
The Passenger, as do the remarkable singing actors (including
Judith Forst, **Joshua Hopkins**, and **Kelly Kaduce**) who
portray the Polish, Russian, French, and Czech prisoners
of various backgrounds.

There’s no escaping your past.

Aboard an ocean liner in the early 1960s, a West German diplomat, Walter,
and his wife Liese are bound for a new posting in Brazil. But unbeknownst
to her husband, Liese served as an SS officer in Auschwitz. Haunted by
her past, she is stunned when she thinks she recognizes a fellow passenger;
is it really Marta, her former prisoner?

Suppressed for more than 40 years, Weinberg’s gripping opera has
emerged anew, electrifying audiences at Austria’s Bregenz Festival and
again in Warsaw, London, Madrid, Karlsruhe, and Houston. The action
moves between two realms—from the pristine white deck of a luxury liner
above to the dark horrors of the death camp below.

Guilt and denial, lies and truth, fear and courage, and love—it’s all here
in an artistic and emotional experience you’ll never forget.

“Music of beauty and enormity...it is a perfect masterpiece...it is a hymn
to humanity...to the international solidarity of those who, subjected
to the most terrible evil, stood up against fascism.” DMITRI SHOSTAKOVICH

Lyric Opera presentation generously made possible by **Richard P. and Susan Kiphart**,
the **Earl and Brenda Shapiro Foundation**, **Sidley Austin LLP**, and **Helen and Sam Zell**.

Marta
Amanda Majeski^o

Liese
Daveda Karanas

Walter
Brandon Jovanovich

Tadeusz
Joshua Hopkins*

Katya
Kelly Kaduce*

Bronka
Judith Forst

Conductor
Sir Andrew Davis

Director
David Pountney

Set Designer
Johan Engels

Costume Designer
Marie-Jeanne Lecca*

Lighting Designer
Fabrice Kebour*

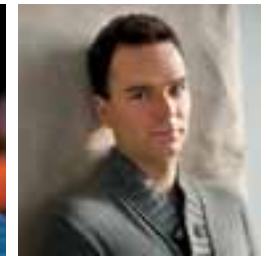
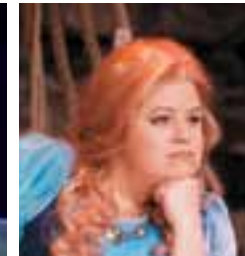
Chorus Master
Michael Black

*Lyric debut
^oAlumna, Ryan Opera Center

Production originated at
Bregenzer Festspiele.



Lyric Artists On Stage in 2014/15



Don Giovanni
Mariusz Kwiecien
Marina Rebeka
Ana María Martínez
Kyle Ketelsen
Antonio Poli

Capriccio
Renée Fleming
Anne Sofie von Otter
Bo Skovhus
William Burden
Audun Iversen
Peter Rose

Il Trovatore
Yonghoon Lee
Amber Wagner
Stephanie Blythe
Quinn Kelsey
Andrea Silvestrelli

Porgy and Bess
Eric Owens
Adina Aaron
Jermaine Smith
Eric Greene
Angel Blue

Anna Bolena
Sondra Radvanovsky
Jamie Barton
Bryan Hymel
John Relyea

Tosca
Tatiana Serjan JAN 24-FEB 5
Misha Didyk JAN 24-FEB 5
Evgeny Nikitin JAN 24-FEB 5
Hui He FEB 27-MAR 14
Jorge de Leon FEB 27-MAR 14
Mark Delavan FEB 27-MAR 14

Tannhäuser
Johan Botha
Amber Wagner
Michaela Schuster
Gerald Finley
John Relyea

The Passenger
Amanda Majeski
Daveda Karanas
Brandon Jovanovich
Judith Forst
Joshua Hopkins
Kelly Kaduce

PHOTOS BY DARIO ACOSTA, KEN HOWARD, CADE MARTIN, TERENCE MCCARTHY, MONIKA BITTERSCHAL, MARTY SOHL, CORY WEAVER

April 25–May 18, 2014

Third week added due
to popular demand!

If you grew up with this iconic
Rodgers and Hammerstein classic,
then you'll want to experience
it at Lyric—and share it with
a new generation!

Don't miss a grand-scale
Lyric production of the world's
most beloved family musical—
live on stage!

The Sound of Music

Maria Rainer
Jenn Gambatese*
Max Detweiler
Edward Hibbert*
The Mother Abbess
Christine Brewer
Baroness Elsa Schraeder
Elizabeth Futral°
Conductor
Rob Fisher*
Director
Marc Bruni*
Set Designer
Michael Yeargan
Costume Designer
Alejo Vietti*
Lighting Designer
Duane Schuler
Chorus Master
Michael Black
Choreographer
Denis Jones*

*Lyric debut
°Alumna, Ryan Opera Center

THE SOUND OF MUSIC
Music by RICHARD RODGERS. Lyrics by OSCAR HAMMERSTEIN II.
Book by HOWARD LINDSAY and RUSSEL CROUSE
Suggested by "The Trapp Family Singers" by Maria Augusta Trapp

PH: TODD ROSENBERG

New Lyric Opera production generously made possible by Exclusive Corporate Sponsor
Northern Trust, and cosponsors: an Anonymous Donor, Robert S. and Susan E. Morrison,
Mrs. Herbert A. Vance and Mr. and Mrs. William C. Vance, Mr. and Mrs. W. James Farrell,
Jim and Vicki Mills/Jon and Lois Mills, and The Neundorf Trusts in Memory of Maynette
V. Neundorf and John K. Neundorf.

#LyricSound

312.827.5600

lyricopera.org/soundofmusic

21

World Premiere!

New Mariachi Opera

El Pasado Nunca Se Termina

(*The Past is Never Finished*)



Saturday,
Mar 28, 2015
7:30 pm

Sunday,
Mar 29, 2015
2:00 pm

Music by
Jose "Pepe" Martínez

Libretto by
Leonard Foglia

Directed by
Leonard Foglia

On May 16, 1910, Halley's Comet appeared in the sky over Mexico. Many believed it foretold the bloodshed and upheaval that were to come. It was the eve of the Mexican Revolution and a smoldering restlessness fueled by abject poverty permeated the country. Peasants turned into soldiers and soldiers into revolutionaries who sought to reclaim land that had been theirs for centuries.

On a hacienda in Morelos, south-central Mexico, as cultures clash, these conflicts boil to the surface and will impact generations to come. Some will emerge to change the face of Mexico while others will become the new face of the American Dream.

Cruzar la Cara de la Luna, with music by Pepe Martínez and story by Leonard Foglia, was one of the smash hits of the 2013 season! Be there when Lyric presents the world premiere of their latest collaboration!

"Lyric's fusion of opera and mariachi brought the crowd to its feet!"

CHICAGO TRIBUNE

Lyric
Unlimited

Lang Lang Recital

Experience this charismatic artist in his only 2015 Chicago appearance!

Saturday,
May 9, 2015
7:30 pm

"There is no stopping this dervish of the keyboard...his playing is so raptly beautiful that one is afraid to breathe for fear of missing something." CHICAGO TRIBUNE

"Stupendous technique... keen musical instincts... the hottest artist on the classical music planet may well be Lang Lang," raves THE NEW YORK TIMES —and in 2015, Chicago audiences have just one opportunity to experience his charismatic, *tour-de-force* style at Lyric Opera of Chicago.

Audiences will thrill to his performance with large-screen video enhancements that follow his every riveting move during this one-night-only engagement!



PHOTO BY TODD ROSENBERG FROM CRUZAR LA CARA DE LA LUNA

PHOTO BY YUN CHI

Welcome to Lyric Opera of Chicago's Diamond Anniversary Season!

An Anniversary Concert with so much to celebrate!
Saturday, November 1, 2014
60th Anniversary Concert 6:30 pm
Lead Sponsor KIRKLAND & ELLIS LLP

Lyric's first sixty years are marked with triumph and joy as the most beloved artists of Lyric's past, present and future come together in one magical evening. Sir Andrew Davis leads the Lyric Opera Orchestra and Chorus, members of the Ryan Opera Center, and a luminary cast including Renée Fleming and jazz legend Ramsey Lewis, Susan Graham, Ana María Martínez, Sondra Radvanovsky, Johan Botha, Eric Owens, Samuel Ramey returning to the Lyric stage, and more, plus a surprise celebrity emcee who will delight us all! Premium concert seating available by calling 312-827-5681. Concert tickets 312-827-5600.



Wine Auction 2015
Presenting Sponsor  Northern Trust
Saturday, February 7, 2015

Named one of *Wine Spectator's* "Top 10 Charity Wine Auctions in 2012" Lyric's stunning Wine Auction returns. Orchestrated by Lyric's phenomenal Women's Board, Wine Auction 2015 will be held on the stage of the Ardis Krainik Theatre. M. David Launay of **Château Gruaud-Larose** will be present to kick off the event and put the fun in fundraising. Let's raise a toast for Lyric! Call 312.827.5681 for information.

PICTURED: WINE AUCTION 2012

Breaking New Ground

Excellence. Relevance. Fiscal Responsibility.
The core values of Lyric Opera, as supported by a strategic plan adopted unanimously by the Board of Directors and embraced by the company. *Breaking New Ground*, a campaign for Lyric in support of our mission to be *the* great North American opera company. Acquisition of cutting-edge stage technology, endowment growth via planned gifts, and additional operational support. Can you help provide the means for Lyric's next sixty years? Call 312.827.5723 for full details.

Diamond Ball 9:00 pm
Sponsored by  and  Northern Trust

Diamond, Emerald, and Sapphire Patrons will continue on to The Diamond Ball at the Hilton Chicago. Sparkle, elegance, the Alex Donner Band, and many surprises are planned to take the celebration to a whole new level. Patron Packages begin at \$25,000. Call 312.827.5681 for more information.

Gala Opening Night Performance

Sponsored by Aon

Saturday, September 27, 2014

7:30 pm

The glamour isn't just onstage. For the first performance of the season, Lyric's audience takes a starring role on the red carpet. Don't forget your camera as you see and are seen by all your friends who also "dressed to the nines" for the occasion.

Usual bar service available for purchase.

A limited number of Opening Night Patron Dinner Packages are available. Cocktail reception and dinner in the William B. and Catherine Graham Room before the first performance of Robert Falls's new production of *Don Giovanni*. Package includes mezzanine box performance ticket. After the show join superstars Mariusz Kwiecien, Ana María Martínez, and the entire *Don Giovanni* cast for a celebratory event at the Civic Opera House. Dinner Packages are \$2,500 per person, limited to 200 persons. Please call 312.827.5681.



8-Opera / 7-Opera Evenings

A	B	C*	D	E
8 MON & TUE	8 WED & TUE	7 FRI & THUR	8 SATURDAY	8 TUE & MON
Capriccio OCT 6 MON	Capriccio OCT 15 WED	Capriccio OCT 9 THUR	Giovanni SEP 27	Giovanni SEP 30 TUE
Giovanni OCT 14 TUE	Giovanni OCT 29 WED	Giovanni OCT 17 FRI	Capriccio OCT 25	Capriccio OCT 28 TUE
Trovatore OCT 27 MON	Trovatore NOV 12 WED	Trovatore NOV 21 FRI	Trovatore NOV 15	Trovatore NOV 18 TUE
Porgy NOV 17 MON	Porgy NOV 19 WED	Porgy DEC 5 FRI	Bolena DEC 6	Bolena DEC 9 TUE
Bolena DEC 15 MON	Bolena JAN 7 WED	Bolena JAN 16 FRI	Porgy DEC 20	Porgy DEC 16 TUE
Tosca FEB 2 MON	Tosca JAN 27 TUE	Tosca FEB 27 FRI	Tosca JAN 24	Tannhäuser FEB 9 MON 6PM
Tannhäuser MAR 2 MON 6PM	Tannhäuser FEB 18 WED 6PM	Tannhäuser MAR 6 FRI 6PM	Tannhäuser FEB 14 6PM	Passenger FEB 24 TUE
Passenger MAR 9 MON	Passenger MAR 4 WED	Passenger YOU CHOOSE DATE	Passenger FEB 28	Tosca MAR 3 TUE

* C Add Passenger (add'l cost) at 30% off on your date of choice. Call 312.827.5600 or login at lyricopera.org

8-Opera / 4-Opera Matinees

MA	MB	MC	MG
8 SUNDAY	4 WEDNESDAY	4 FRIDAY	4 THURSDAY
Giovanni OCT 5	Giovanni OCT 8	Giovanni OCT 24	Giovanni OCT 2
Capriccio OCT 12	Trovatore NOV 5	Porgy NOV 28	Porgy DEC 11
Trovatore NOV 9	Porgy NOV 26	Bolena DEC 12	Tosca FEB 5
Porgy NOV 23	Tosca MAR 11	Tosca JAN 30	Passenger MAR 12
Bolena DEC 21			
Tannhäuser FEB 22 1PM			
Tosca MAR 8			
Passenger MAR 15			

Evenings 7:30 pm except *Tannhäuser* —6 pm
Matinees 2 pm except *Tannhäuser* —1 pm

6-Opera Evenings

D1	D2	F
6 SATURDAY	6 SATURDAY	6 SAT & THUR
Giovanni SEP 27	Giovanni OCT 11	Giovanni OCT 11 SAT
Trovatore NOV 15	Capriccio OCT 25	Trovatore NOV 29 SAT
Bolena DEC 6	Trovatore NOV 29	Porgy DEC 13 SAT
Porgy DEC 20	Porgy DEC 13	Bolena JAN 10 SAT
Passenger FEB 28	Tosca JAN 24	Tannhäuser FEB 26 THUR 6PM
Tosca MAR 14	Tannhäuser FEB 14 6PM	Tosca MAR 14 SAT

5-Opera Evenings

A1	B1	E1	F1
5 MONDAY	5 WEDNESDAY	5 TUESDAY	5 TUE, WED, THUR, SAT
Capriccio OCT 6	Capriccio OCT 15	Giovanni SEP 30	Capriccio OCT 22 WED
Porgy NOV 17	Giovanni OCT 29	Capriccio OCT 28	Porgy DEC 2 TUE
Bolena DEC 15	Trovatore NOV 12	Trovatore NOV 18	Bolena JAN 10 SAT
Tannhäuser FEB 9 6PM	Bolena JAN 7	Porgy DEC 16	Tosca JAN 27 TUE
Passenger MAR 9	Tannhäuser FEB 18 6PM	Passenger FEB 24	Tannhäuser FEB 26 THUR 6PM

4-Opera Evenings

A2	A3*	B2	B3*	C3*	E3*
4 MONDAY	4 MONDAY	4 TUE & WED	4 WED & TUE	4 FRI & THUR	4 TUE & MON
Trovatore OCT 27	Capriccio OCT 6	Giovanni OCT 14 TUE	Capriccio OCT 15 WED	Capriccio OCT 9 THUR	Giovanni SEP 30 TUE
Porgy DEC 8	Trovatore OCT 27	Porgy NOV 19 WED	Porgy NOV 19 WED	Trovatore NOV 21 FRI	Capriccio OCT 28 TUE
Tosca FEB 2	Porgy NOV 17	Bolena DEC 9 TUE	Tosca JAN 27 TUE	Porgy DEC 5 FRI	Tannhäuser FEB 9 MON 6PM
Tannhäuser MAR 2 6PM	Passenger MAR 9	Passenger MAR 4 WED	Passenger MAR 4 WED	Tosca FEB 27 FRI	Passenger FEB 24 TUE

*Seats assigned after 8- and 7-opera subscribers

4-Opera Choose Your Own

Flex-4 You choose your 4 operas and dates—evenings or matinees

O *Out of Towner* — Choose 4 opera performances that best fit your travel schedule.

Seat locations differ from opera to opera and are assigned after other series.

Subscribers save up to 40%.

Reserve a subscription of your choice—with the security of easy exchanges and the biggest savings of the year!



Prices change throughout the season. Subscription prices shown below are up to 40% less than in-season individual show prices, and are guaranteed only until April 1, 2014.

Save 40%
over individual
ticket prices

Save 25–35%
over individual
ticket prices

Save 12–24%
over individual
ticket prices

Series and Number of Operas		Main Floor						Box	First Balcony				Upper Balcony	
		FIRST 22 ROWS		BB-FF	CENTER GG-MM	CENTER NN-TT	BALANCE GG-TT		DRESS CIRCLE				A-H	J-R
		PRIME	BALANCE						A-E	F-J	K-O	P-T		
A, B, E	8	1,416	880	944				1,416	984				368	160
D	8	1,712	1,408	1,216				1,712	1,280				472	232
MA	8	1,712	1,408	1,216	944	648	384	1,712	1,280	976	680	464	472	304
C	7	1,383	824	770	607	412	327	1,383	993	735	516	306	376	199
D1, D2	6				708	486	288			732	510	348		
F	6	1,234	933	836				1,234	908				337	165
A1, B1, E1	5				395	260	195			405	270	180		
F1	5				407	270	205			419	293	190		
A2, B2	4				316	208	156			324	216	144		
A3, B3, E3	4	792	440	592				792	624				220	100
C3	4	831	687	631	503	343	183		663	519	375	251	259	159
MB, MC, MG	4	596	440	476	392	256	156	596	492	408	280	176	184	100
FLEX-4, O SERIES—4 weekdays	4	824	440	596	472	312	196	824	640	492	344	216	236	128
FLEX-4, O SERIES—4 weekends	4	876	476	648	524	364	240	876	696	548	396	272	288	180

Discounts included in the series prices shown above. Subscriptions not possible in the blank areas above. Flex / O Series seat locations vary by opera and are seated after fixed seat subscriptions.

Single Opera Tickets														
WEEKDAYS (Mon–Fri Matinee)		229	184	168	132	86	65	229	177	136	95	60	65	34
WEEKENDS (Fri Evening, Sat, Sun)		244	199	183	147	101	80	244	192	151	110	75	80	49
WEEKDAYS Only 14/15 Subscribers Save 10%		206	166	151	119	77	59	206	159	122	86	54	59	31
WEEKENDS Only 14/15 Subscribers Save 10%		220	179	165	132	91	72	220	173	136	99	68	72	44
CHILDREN School age up to age 17		50	50	50	40	40	40	50	30	30	30	30	20	20

Price per seat shown. Opera prices shown guaranteed only through April 1.

Special Events—Subscriber Prices		Main Floor			Box	First Balcony		Upper Balcony			
		FRONT (FIRST 27 ROWS) PRIME CENTER	MID CENTER	BALANCE		REAR PRIME	BALANCE	PRIME	BALANCE	PRIME	BALANCE
EL PASADO	pg. 22	99	75	59	49	39	99	75	39	39	29
LANG LANG RECITAL	pg. 23	159	129	109	89	69	159	129	89	69	34
MAGIC VICTROLA Adult/Child	pg. 32	40/20	40/20	40/20	30/15	20/10	40/20	40/20	30/15	20/10	20/10
CAROUSEL Weekdays (Tues–Fri)	pg. 32	143	116	80	62	42	116	80	62	42	26
CAROUSEL Weekends (Sat, Sun)	pg. 32	179	152	116	89	62	152	116	89	62	40
60TH ANNIVERSARY CONCERT	pg. 24	SOLD OUT	150	125	100	75	SOLD OUT	150	100	75	49

Price per seat shown. Initial offer pricing. Prices subject to change.

Get these exclusive benefits when you subscribe! Pay the same or less than last season—on all series!*



Yours to Enjoy—Subscribers Get it All!

- First choice of seats and special pricing for *The Sound of Music* and *Carousel*.
- Priority dining reservations.
- Free replacement of lost tickets.
- Free lectures before performances.
- Advance ordering privileges for all special events.
- A subscription to *Lyric Opera News*.

Subscription Series	A B E	C	D	MA	D1 D2	F	A1 B1 E1 F1	A2 B2	A3 B3 C3 E3	MB MC MG	O FLEX
# OF OPERAS	8	7	8	8	6	6	5	4	4	4	4
Saving over single ticket prices	●	●	●	●	●	●	●	●	●	●	●
Save 10% on additional opera & musical tickets	●	●	●	●	●	●	●	●	●	●	●
Guaranteed same seats within your series	●	●	●	●	●	●	●	●	●	●	
Save up to 40%	●	●	●	●	●	●	●	●	●	●	●
Free exchanges	●	●	●	●							
\$4 per ticket exchanges					●	●	●	●	●	●	●
Eligible for TRADEONE					●	●	●	●	●	●	
Choose your own dates											●

* Except Flex-4/O Series

Now Save Up to 40% in ALL Lyric Series

Choose series and save up to 40% over individual ticket prices. Check out your series savings on page 28!

Your Own Personal Seats*

Subscribers may renew their seats for all the seasons to come—that's why lifelong friendships often develop with subscriber-neighbors.

*Flex 4 and O Series seats vary for every opera

Just 25% Down Secures Your Series

You can reserve your series for just 25% down—with no processing or handling fees.

Easy Exchanges

We make it simple for you. If your schedule changes, it's easy to exchange your seats online or via phone for another date of the same opera.

5-day notice required and fees may apply.

Need Flexibility? Flex-4 is for you!

Can't find a series that fits your needs? Pick the 4 operas you want on dates that you can attend.

Please note that your exact seat location will differ from date to date.

TRADEONE™

When you subscribe for a 4-, 5-, or 6-opera series, you may customize your series with **TRADEONE**. This allows you to trade one opera in your series for one that is not. Just let us know which opera you want to trade when you subscribe or after you receive your tickets. Fees apply.

New! Children's Prices for Every Opera

Introduce the children in your life to the wonder of grand opera at special, low prices of \$20-\$50 depending on your seat location. If you purchase children's tickets, we'll arrange your subscription seating so that you will sit together for the show.

New! Private Sale—10% Off Individual Operas and Musicals

Only 2014/15 subscribers get an exclusive, non-expiring 10% discount on individual ticket purchases for every opera and musical! You can buy individual tickets at reduced prices as soon as you subscribe. Order today for the best private sale prices. Take your friends and family to your season-favorite, or get operas that aren't in your series. Subscribers can order additional individual tickets online or via phone.

Subscriber Priority Seating for Special Events

Seats are limited—and our subscribers get them first!

Please see pages 20–25, and 32 for our 60th Season Special Events.

Ticket Office Policies

The deposit of checks or processing of credit cards, which are processed immediately upon receipt, does not always guarantee tickets. Refunds for ticket orders we are unable to fill will be promptly sent to patrons.

Child Tickets: Children must be school-age up to age 17; no babes-in-arms or lapsitting. Minors must be accompanied by an adult. No refunds on previously purchased tickets.

The management reserves the right to refuse admission to any person who may cause a disturbance. Lyric performances begin on time. Casts subject to change.

The Magic Victrola



A kid-friendly intro to opera for children and their families!

Saturday, Jan 17, 2015 2:00 pm

Written by David Kersnar and Jacqueline Russell
Featuring music by Verdi, Puccini and others

Two children playing in an attic make a wonderful discovery—an old trunk that belonged to their grandparents. And it's filled with costumes, props, opera albums and an old Victrola! So what happens when the kids start to play the old recordings? Magic—that's what! Scenes from beloved operas suddenly come to life!

60 minutes of fun and music for kids ages 5-10
Featuring members of the Ryan Opera Center plus the Lyric Opera Orchestra

Kids tickets from \$10



Carousel

Join us in April 2015 for a new production at Lyric Opera!

Nettie Fowler
Denyce Graves

Conductor
Rob Fisher

Director
Rob Ashford

Remaining Cast
TBA



On sale now to subscribers!

Purchase your tickets when you subscribe to the 2014/15 season.
See page 28 for pricing details.

CAROUSEL

Music by RICHARD RODGERS. Book by OSCAR HAMMERSTEIN II.
Lyrics by OSCAR HAMMERSTEIN II.

Based on the play *LILIOM* by Ferenc Molnár.

As adapted by Benjamin F. Glazer. Original dances by Agnes de Mille.

New Lyric production generously made possible by The Negaunee Foundation.

312.827.5600

MONDAY 2014	TUESDAY	WEDNESDAY	THURSDAY	FRIDAY	SATURDAY	SUNDAY
	Sept 23	Sept 24	Sept 25	Sept 26	Sept 27 7:30 PM Giovanni D, D1	Sept 28
Sept 29	Sept 30 7:30 PM Giovanni E, E1, E3	Oct 1	Oct 2 2 PM Giovanni MG	Oct 3	Oct 4	Oct 5 2 PM Giovanni MA
Oct 6 7:30 PM Capriccio A, A1, A3	Oct 7	Oct 8 2 PM Giovanni MB	Oct 9 7:30 PM Capriccio C, C3	Oct 10	Oct 11 7:30 PM Giovanni F, D2	Oct 12 2 PM Capriccio MA
Oct 13	Oct 14 7:30 PM Giovanni A, B2	Oct 15 7:30 PM Capriccio B, B1, B3	Oct 16	Oct 17 7:30 PM Giovanni C	Oct 18	Oct 19
Oct 20	Oct 21	Oct 22 7:30 PM Capriccio F1	Oct 23	Oct 24 2 PM Giovanni MC	Oct 25 7:30 PM Capriccio D, D2	Oct 26
Oct 27 7:30 PM Trovatore A, A2, A3	Oct 28 7:30 PM Capriccio E, E1, E3	Oct 29 7:30 PM Giovanni B, B1	Oct 30	Oct 31	Nov 1 6:30 PM 60th Concert 9 PM Diamond Ball	Nov 2
Nov 3	Nov 4	Nov 5 2 PM Trovatore MB	Nov 6	Nov 7	Nov 8	Nov 9 2 PM Trovatore MA
Nov 10	Nov 11	Nov 12 7:30 PM Trovatore B, B1	Nov 13	Nov 14	Nov 15 7:30 PM Trovatore D, D1	Nov 16
Nov 17 7:30 PM Porgy A, A1, A3	Nov 18 7:30 PM Trovatore E, E1	Nov 19 7:30 PM Porgy B, B2, B3	Nov 20	Nov 21 7:30 PM Trovatore C, C3	Nov 22	Nov 23 2 PM Porgy MA
Nov 24	Nov 25	Nov 26 2 PM Porgy MB	Nov 27 Thanksgiving	Nov 28 2 PM Porgy MC	Nov 29 7:30 PM Trovatore F, D2	Nov 30
Dec 1	Dec 2 7:30 PM Porgy F1	Dec 3	Dec 4	Dec 5 7:30 PM Porgy C, C3	Dec 6 7:30 PM Bolena D, D1	Dec 7
Dec 8 7:30 PM Porgy A2	Dec 9 7:30 PM Bolena E, B2	Dec 10	Dec 11 2 PM Porgy MG	Dec 12 2 PM Bolena MC	Dec 13 7:30 PM Porgy F, D2	Dec 14
Dec 15 7:30 PM Bolena A, A1	Dec 16 7:30 PM Porgy E, E1	Dec 17	Dec 18	Dec 19	Dec 20 7:30 PM Porgy D, D1	Dec 21 2 PM Bolena MA

MONDAY 2015	TUESDAY	WEDNESDAY	THURSDAY	FRIDAY	SATURDAY	SUNDAY
	Jan 6	Jan 7 7:30 PM Bolena B, B1	Jan 8	Jan 9	Jan 10 7:30 PM Bolena F, F1	Jan 11
Jan 12	Jan 13	Jan 14	Jan 15	Jan 16 7:30 PM Bolena C	Jan 17 2 PM Family Opera	Jan 18
Jan 19	Jan 20	Jan 21	Jan 22	Jan 23	Jan 24 7:30 PM Tosca D, D2	Jan 25
Jan 26	Jan 27 7:30 PM Tosca B, B3, F1	Jan 28	Jan 29	Jan 30 2 PM Tosca MC	Jan 31	Feb 1
Feb 2 7:30 PM Tosca A, A2	Feb 3	Feb 4	Feb 5 2 PM Tosca MG	Feb 6	Feb 7 Wine Auction	Feb 8
Feb 9 6 PM Tannhäuser E, A1, E3	Feb 10	Feb 11	Feb 12	Feb 13	Feb 14 6 PM Tannhäuser D, D2	Feb 15
Feb 16	Feb 17	Feb 18 6 PM Tannhäuser B, B1	Feb 19	Feb 20	Feb 21	Feb 22 1 PM Tannhäuser MA
Feb 23	Feb 24 7:30 PM Passenger E, E1, E3	Feb 25	Feb 26 6 PM Tannhäuser F, F1	Feb 27 7:30 PM Tosca C, C3	Feb 28 7:30 PM Passenger D, D1	Mar 1
Mar 2 6 PM Tannhäuser A, A2	Mar 3 7:30 PM Tosca E	Mar 4 7:30 PM Passenger B, B2, B3	Mar 5	Mar 6 6 PM Tannhäuser C	Mar 7	Mar 8 2 PM Tosca MA
Mar 9 7:30 PM Passenger A, A1, A3	Mar 10	Mar 11 2 PM Tosca MB	Mar 12 2 PM Passenger MG	Mar 13	Mar 14 7:30 PM Tosca F, D1	Mar 15 2 PM Passenger MA
Mar 16	Mar 17	Mar 18	Mar 19	Mar 20	Mar 21	Mar 22
Mar 23	Mar 24	Mar 25	Mar 26	Mar 27	Mar 28 7:30 PM El Pasado	Mar 29 2 PM El Pasado
Apr 6	Apr 7	Apr 8	Apr 9	Apr 10 1:30 PM Carousel	Apr 11 7:00 PM Carousel	Apr 12 1:30 PM Carousel
Apr 13	Apr 14	Apr 15	Apr 16 1:30 PM Carousel 7 PM Carousel	Apr 17 7 PM Carousel	Apr 18 1:30 PM Carousel 7 PM Carousel	Apr 19 1:30 PM Carousel
Apr 20	Apr 21 1:30 PM Carousel	Apr 22 1:30 PM Carousel	Apr 23 1:30 PM Carousel 7 PM Carousel	Apr 24 7 PM Carousel	Apr 25 1:30 PM Carousel 7 PM Carousel	Apr 26 1:30 PM Carousel
May 4	May 5	May 6	May 7	May 8	May 9 7:30 PM Lang Lang	May 10

Subscribe now

Save up to 40%

No price increases for regular series!

4-opera series from just \$100

Flex-4 series lets you choose your own performances

Subscribers pay as little as \$20 per ticket

25% down secures your seats!

Subscribe Now \$12,827,560.00 or lyricopera.org

On Stage in 2014/15

Stephanie Blythe

Johan Botha

Mark Delavan

Gerald Finley

Renée Fleming

Hui He

Brandon Jovanovich

Guinn Kelsey

Mariusz Kwiecien

Lang Lang

Yonghoon Lee

Amanda Majeski

Ana María Martínez

Eric Owens

Sondra Radvanosky

Marina Rebeka

John Relyea

Bo Skovhus

Anne Sofie von Otter

Amber Wagner

PHOTO BY CATHERINE ASHMORE (ENGLISH NATIONAL OPERA)

Long Live Passion

Lyric Opera Diamond Season

Anthony Freud General Director

Sir Andrew Davis Music Director

Renée Fleming Creative Consultant

LYRIC OPERA OF CHICAGO

20 NORTH WACKER DRIVE

CHICAGO ILLINOIS 60606

NON-PROFIT ORG.

U.S. POSTAGE

PAID

CHICAGO ILLINOIS

PERMIT NO. 6047