



**LONG
LIVE
PASSION**

Lyric

**2015/16
SEASON**

**9 NEW-TO-CHICAGO
PRODUCTIONS!**

The Marriage of Figaro
Mozart

Cinderella
Rossini

Wozzeck
Berg

The Merry Widow
Lehár

Bel Canto
López

Nabucco
Verdi

Der Rosenkavalier
Strauss

Romeo and Juliet
Gounod

The King and I
Rodgers & Hammerstein

**Plácido Domingo &
Ana María Martínez**
with Sir Andrew Davis
in Concert

Dmitri Hvorostovsky
in Recital

**SUBSCRIBE
NOW**

WELCOME



STEVE LEONARD

When we design a new Lyric season, our aim is to enthrall you, envelop you, excite you, and invite you to experience the unique artistry of our art form from your very own seat in the opera house.

The 2015/16 season offers the opportunity to be swept away by nine sensational productions, all of which are new to Chicago. Three of these productions are original new Lyric productions, including our eagerly anticipated world-premiere commission, *Bel Canto*.

We all want to see big stars and you'll hear them here, as Renée Fleming, Amanda Majeski, Isabel Leonard, Alessandro Corbelli, Thomas Hampson, Elizabeth Futral, Danielle de Niese, Željko Lučić, Tatiana Serjan, Sophie Koch, Alice Coote, Luca Pisaroni, Joseph Calleja, Susanna Phillips, Eric Cutler, and more take the Lyric stage during the 2015/16 season.

We also long for the chance to be in the audience to witness major debuts, and you can expect outstanding premiere Lyric performances from an international roster of artists, including American tenor Lawrence Brownlee *CINDERELLA*; Russian bass Dmitry Belosselskiy *NABUCCO*; Czech bass-baritone Adam Plachetka and German soprano Christiane Karg *THE MARRIAGE OF FIGARO*; Polish bass-baritone Tomasz Konieczny and German soprano Angela Denoke *WOZZECK*; and German soprano Christina Landshamer and British bass Matthew Rose *DER ROSENKAVALIER*.

You will experience world-class conductors, one of Lyric's hallmarks, with Sir Andrew Davis on the podium for four operas in the 2015/16 season and other major maestros at the helm with Henrik Nánási *THE MARRIAGE OF FIGARO*, Carlo Rizzi *NABUCCO*, Edward Gardner *DER ROSENKAVALIER*, and Emmanuel Villaume *ROMEO AND JULIET*. The world-renowned and critically acclaimed Lyric Opera Chorus and Orchestra will provide the whole season with unparalleled excellence.

As always, Lyric subscribers receive the best ticket prices, the best incentives for early renewal, and exclusive benefits offered to no one else. You'll read all about those offers in the pages that follow, including the opportunity to secure your seats for very special events like Plácido Domingo in concert with Ana María Martínez and Sir Andrew Davis, and Dmitri Hvorostovsky in recital. You'll also guarantee your tickets for the season-ending American musical, Rodgers and Hammerstein's beloved classic *The King and I*.

The spectacle, the emotion, and the thrill that only opera can provide – it's all here for you. Enjoy it all as a 2015/16 Lyric subscriber and feed your need for passion.

I look forward to welcoming you to Lyric's performances throughout the season.

Anthony Freud,
General Director



DARIO JACOSTA

“If you love powerful music, gripping drama, and theatrical spectacle that dazzles, entertains, and leaves you wanting more, then join your fellow music lovers at Lyric!”

- Sir Andrew Davis, *Music Director*



TABLE OF CONTENTS

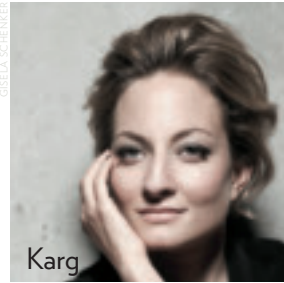
- 05** Season Performances
- 21** Special Events
- 25** Beyond the Performance
- 27** Subscription Series
- 29** Pricing and Seating
- 30** Subscriber Benefits
- 31** Calendar



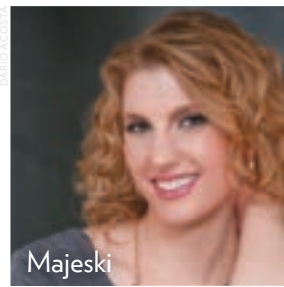
COLLAGE: ROBERT KUSEL/DAN REST, TOBY SCHNEIDER



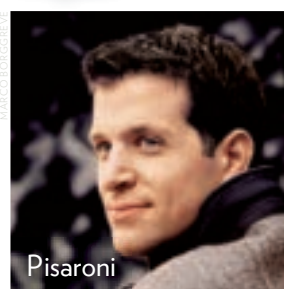
Plachetka



Karg



Majeski



Pisaroni

OSIELA SCHEINER

DARIO ACOSTA

COSTUME SKETCHES COURTESY OF SUSAN MCKEY
MARCO BONGIOVINE SE

Mozart

The Marriage of Figaro

In Italian with projected English titles

FIGARO

Adam Plachetka*

SUSANNA

Christiane Karg*

COUNTESS ALMAVIVA

Amanda Majeski†

COUNT ALMAVIVA

Luca Pisaroni

CHERUBINO

Rachel Frenkel*

CONDUCTOR

Henrik Nánási*

DIRECTOR

Barbara Gaines

SET DESIGNER

James Noone

COSTUME DESIGNER

Susan Mickey*

LIGHTING DESIGNER

Robert Wierzel

CHORUS MASTER

Michael Black

CHOREOGRAPHER

Harrison McEldowney

*LYRIC OPERA DEBUT

†RYAN OPERA CENTER ALUMNA

NEW PRODUCTION

September 26 – October 24

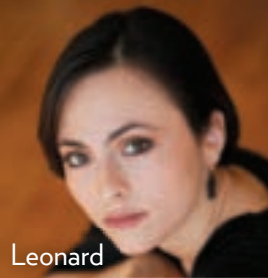
Join us at Lyric as the resourceful Figaro gets ready to marry his lovely Susanna – and endeavors to get his fiancée to the altar with her virtue still intact! His boss, the Count, has designs on Susanna and sees no reason to let her escape his noble snare, even if it means breaking the heart of his own long-suffering bride. But there's rebellion in the air in a comedy that boasts more salon drama and backroom maneuverings than a whole season of *Downton Abbey*.

Enjoy Mozart's masterpiece of mistaken identities, morals, and manners, directed by Chicago Shakespeare Theater's brilliant

Barbara Gaines with stunning new sets and sumptuous costumes.

Experience the Lyric debuts of two major European stars – **Adam Plachetka** and **Christiane Karg** – with **Luca Pisaroni** as the brilliantly rapacious Count and **Amanda Majeski** as “a ravishing, moving, and dignified Countess.” *FINANCIAL TIMES*

New Lyric Opera production generously made possible by **The Negaunee Foundation**, the **Abbott Fund**, **Randy L. and Melvin R. Berlin**, **Exelon**, **JPMorgan Chase & Co.**, and **Sylvia Neil and Daniel Fischel**.



Leonard

JAMES SALTER



Brownlee

DEBBE E. BLANK



Corbelli

BILL COOPER (MELISH NATIONAL LOPEVA)



Priante

ANTONIO ARACOMA

Rossini

Cinderella

In Italian with projected English titles

ANGELINA (CINDERELLA)
Isabel Leonard

PRINCE RAMIRO
Lawrence Brownlee*

DON MAGNIFICO
Alessandro Corbelli

DANDINI
Vito Priante*

ALIDORO
Christian Van Horn†

Coproduction of
Houston Grand Opera,
Welsh National Opera,
Gran Teatre del Liceu, and
Grand Théâtre de Genève.

CONDUCTOR
Sir Andrew Davis

DIRECTOR
Joan Font*

DESIGNER
Joan Guillen*

LIGHTING DESIGNER
Albert Faura*

CHORUS MASTER
Michael Black

CHOREOGRAPHER
Xevi Dorca*

*LYRIC OPERA DEBUT
†RYAN OPERA CENTER ALUMNUS

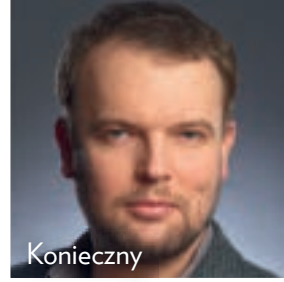
NEW-TO-CHICAGO PRODUCTION

October 4 – 30

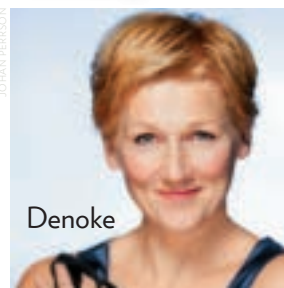
The beloved tale of Cinderella (*La Cenerentola*) meets operatic delight in this bubbling Rossini hit! You know the story: Cinderella is dressed in rags and destined to toil away for her nasty stepsisters and horrible stepfather – who is scheming to convince the Prince to marry one of his “real” daughters. But not so fast, ladies – mean girls aren’t the Prince’s style, and there’s a happily-ever-after ending for the maid with the heart of gold in this “triumphant, dazzling production... that blends a riot of color with sophisticated comedy just oozing with mirth.” *HOUSTON CHRONICLE*

Bring the kids and enjoy a fairytale lineup of stars, including superstar mezzo-soprano **Isabel Leonard**, who captures hearts with her “coloratura agility...striking beauty... and charm.” *CHICAGO TRIBUNE* She partners with *bel canto* master **Lawrence Brownlee** in his eagerly awaited Lyric debut as he sings “with freedom and fervor...a reminder of the infectious excitement Rossini makes possible” *THE NEW YORK TIMES* and acclaimed Lyric favorite **Alessandro Corbelli** as the pompous stepfather.

Lyric Opera presentation generously made possible by **Margot and Josef Lakonishok**.



Konieczny



Denoke



Siegel



Vinke

SOLDIER PHOTO: PUBLIC DOMAIN PHOTO BY JAMES FRANCIS HURLEY GRAVE PHOTO: PHOTO BY MARGARET HALL COLLECTION OF THE MASSACHUSETTS HISTORICAL SOCIETY. JOHAN PERSSON

Berg

Wozzeck

In German with projected English titles

WOZZECK

Tomasz Konieczny*

MARIE

Angela Denoke*

CAPTAIN

Gerhard Siegel*

DRUM MAJOR

Stefan Vinke*

DOCTOR

Brindley Sherratt*

ANDRES

David Portillo†

MARGRET

Jill Grove

CONDUCTOR

Sir Andrew Davis

DIRECTOR

Sir David McVicar

DESIGNER

Vicki Mortimer

LIGHTING DESIGNER

Paule Constable

CHORUS MASTER

Michael Black

CHOREOGRAPHER

Andrew George

*LYRIC OPERA DEBUT

†RYAN OPERA CENTER ALUMNUS

NEW PRODUCTION

November 1 – 21

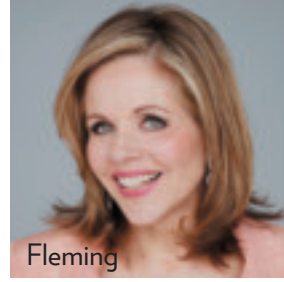
Raw, powerful, and transformational in its emotional punch and musical form, *Wozzeck* is an opera that's meant to shake an audience to its core. **Sir David McVicar** makes his triumphant return to Lyric to deliver a thrilling new production of this 20th-century masterpiece.

Wozzeck, a poverty-stricken soldier, is working to support Marie and their young son, born out of wedlock. Mocked, discounted, and abused by his superiors, when he is cheated on by the only woman he loves, he finally snaps – driven to madness and murder. All that remains is a lonely little boy to remind the world

that once there was a man named *Wozzeck*.

Sir Andrew Davis conducts a work he considers one of the most important pieces written in the 20th century, with a stellar cast that includes **Tomasz Konieczny**, a favored headliner all across Europe, and **Angela Denoke**, in one of her signature roles, “dramatically as well as vocally transcendent.” *NEUE ZÜRCHER ZEITUNG*

New Lyric Opera production generously made possible by **The Monument Trust (UK)** and **Stefan Edlis and Gael Neeson**, with additional support from **Robert Turner**.



Fleming

DARBO CALZADILLA



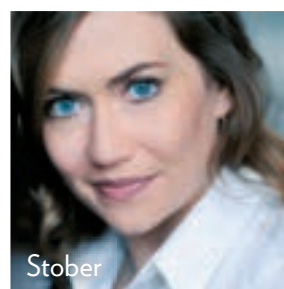
Futral

DARBO CALZADILLA



Hampson

KEN HOWARD (METROPOLITAN OPERA)



Stober

Lehár

The Merry Widow

In English with projected English titles

HANNA

Renée Fleming (NOV 14 – DEC 3)
Elizabeth Futral* (DEC 9 – 13)

DANILO

Thomas Hampson

VALENCIENNE

Heidi Stober*

CAMILLE

Michael Spyres

ZETA

Patrick Carfizzi*

Production owned by
The Metropolitan Opera.

CONDUCTOR

Sir Andrew Davis

DIRECTOR & CHOREOGRAPHER

Susan Stroman*

SET DESIGNER

Julian Crouch*

COSTUME DESIGNER

William Ivey Long*

LIGHTING DESIGNER

Paule Constable

CHORUS MASTER

Michael Black

*LYRIC OPERA DEBUT

*RYAN OPERA CENTER ALUMNA

Acclaimed Met Premiere December 31, 2014

NEW-TO-CHICAGO PRODUCTION

November 14 – December 13

Beautiful Hanna's late husband has left her a very rich woman. In fact, she's so rich that the economy of her homeland depends on her marrying a local – so the ambassador springs into action with the help of his wife (a former cancan girl) to find Hanna the right husband. But it's a tricky affair because the wily widow already has someone in mind: Count Danilo, an old flame, who has no intention of giving up bachelorhood. He's got a bevy of beauties delighted to keep him happy with no strings attached.

Rendezvous are rampant. Complications abound. Hanna ultimately gets her man as Lehár's

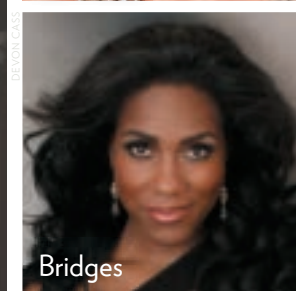
unforgettable tunes bubble happily along. **Susan Stroman**, one of Broadway's hottest directors, leads Lyric's blockbuster cast, featuring the incomparable star power of **Renée Fleming**, **Elizabeth Futral**, and **Thomas Hampson** in an "eye-popping production...breathtaking to look at and a pleasure to hear."

HUFFINGTON POST

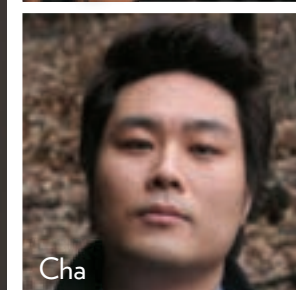
Lyric Opera presentation generously made possible by the **Donna Van Eekeren Foundation**, an **Anonymous Donor**, **Mr. and Mrs. J. Thomas Hurvis**, **Kirkland & Ellis LLP**, and the **Mazza Foundation**.



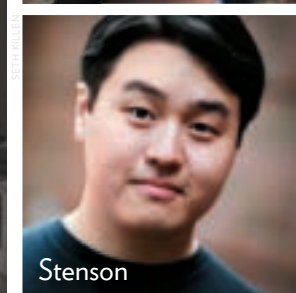
de Niese



Bridges



Cha



Stenson

SCENIC DESIGN: FOR: BEL CAWO BY DAVID TORRES
SET: FRANKLIN

DEVON CASSE

DECCA - CHRIS DUNLOP

Music by Jimmy López
Libretto by Nilo Cruz
Based on the novel by Ann Patchett

Bel Canto

In Spanish, English, Japanese, Russian, German, and Quechua, with projected English titles

ROXANE COSS

Danielle de Niese

CARMEN

J'nai Bridges[‡]

HOSOKAWA

Jeongcheol Cha^{*}

GEN

Andrew Stenson^{*}

GENERAL ALFREDO

Rafael Davila^{*}

MESSNER

Jacques Imbrailo^{*}

RUBEN IGLESIAS

William Burden

CESAR

Anthony Roth Costanzo^{*}

CONDUCTOR

Sir Andrew Davis

DIRECTOR

Kevin Newbury

SET DESIGNER

David Korins^{*}

COSTUME DESIGNER

Constance Hoffmann^{*}

LIGHTING DESIGNER

Duane Schuler

PROJECTION DESIGNER

Greg Emetaz^{*}

CHORUS MASTER

Michael Black

**LYRIC'S NEW COMMISSION OF
BEL CANTO IS CURATED BY**

Renée Fleming

^{*}LYRIC OPERA DEBUT

[‡]RYAN OPERA CENTER ALUMNA

WORLD PREMIERE

December 7 – January 17

Ann Patchett's best-selling novel *Bel Canto* took the literary world by storm – now, in a new work curated by Lyric's creative consultant, Renée Fleming, this riveting story inspired by a real-life event becomes a powerful opera.

Superstar American diva Roxane Coss has flown to Peru to sing at the vice president's home for a visiting Japanese mogul who is an opera buff. Dignitaries of every nationality are there – but an international crisis explodes when terrorists storm the mansion and take everyone hostage.

Isolated for months, unlikely alliances form between captors and captives as fear and anger mingle uneasily with desire and even love. Music is the one universal language – but can it draw

forth the humanity that exists in us all?

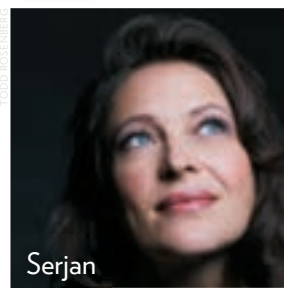
An extraordinary international cast is led by **Danielle de Niese**, who caused a sensation as Lyric's Cleopatra in 2007. **Sir Andrew Davis** teams up with **Kevin Newbury** (*Anna Bolena*) for this world premiere with a libretto by Pulitzer Prize winner **Nilo Cruz** and music by **Jimmy López**, a native of Peru and "one of the most dynamic young composers working today."

CHICAGO SUN-TIMES

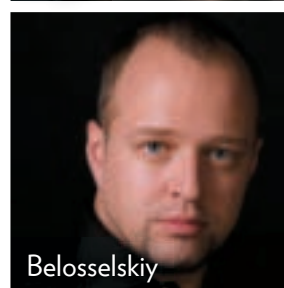
Lyric Opera world premiere generously made possible by **The Andrew W. Mellon Foundation**, **Helen and Sam Zell**, **Ethel and William Gofen**, **Ada and Whitney Addington**, the **Walter E. Heller Foundation**, and **Roberta L. and Robert J. Washlow**, with additional support from the **National Endowment for the Arts** and **Prince Charitable Trusts**.



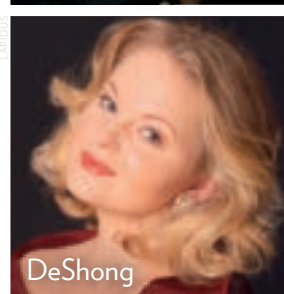
Lučić



Serjan



Belosselskiy



DeShong

© 2010 THE ROYAL OPERA HOUSE
CATHERINE ASHMORE/ROYAL OPERA HOUSE

Verdi

Nabucco

In Italian with projected English titles

NABUCCO

Željko Lučić

ABIGAILLE

Tatiana Serjan

ZACCARIA

Dmitry Belosselskiy*

FENENA

Elizabeth DeShong†

ISMAELE

Sergey Skorokhodov*

Coproduction with Teatro alla Scala, Royal Opera House Covent Garden, and Gran Teatre del Liceu.

CONDUCTOR

Carlo Rizzi

DIRECTOR

Daniele Abbado*

SET DESIGNER

Alison Chitty

LIGHTING DESIGNER

Alessandro Carletti*

CHORUS MASTER

Michael Black

*LYRIC OPERA DEBUT

†RYAN OPERA CENTER ALUMNA

NEW-TO-CHICAGO PRODUCTION

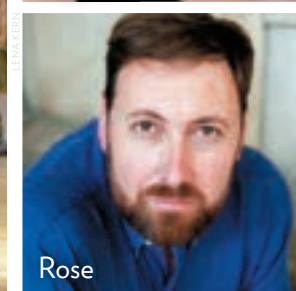
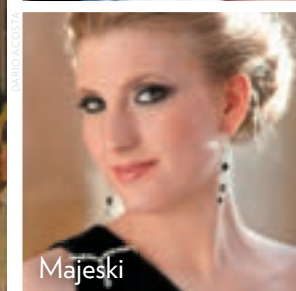
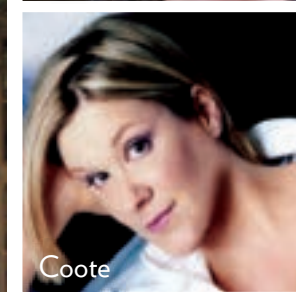
January 23 – February 12

Politics. Religion. A dangerous love triangle. Plus two killer roles and some of the greatest choral music ever written, including the soul-stirring “Va, pensiero” chorus. This is the opera that made Verdi a star!

On one side, the fiery Hebrew priest Zaccaria, battling to lead his people from oppression. On the other, Nabucco, the tyrannical Babylonian king and his formidable adopted daughter Abigaille, who will stop at nothing to get her father’s throne and her sister’s lover. **Željko Lučić**, Lyric’s riveting Rigoletto in 2013, is Nabucco, a role compared to Shakespeare’s

King Lear in its majestic sweep. Experience his journey from despised despot to self-proclaimed god; then from paranoid madman to grateful father redeemed by faith. And watch as dramatic-soprano phenom **Tatiana Serjan** eats up the stage as the warrior princess Abigaille, worthy sister to Lady Macbeth in her lust for power. Mighty Russian bass **Dmitry Belosselskiy** is Zaccaria.

Lyric Opera coproduction generously made possible by **Katherine A. Abelson and Robert J. Cornell**.



© PATRICK KONIG

DAVID ACOSTA

W. HOSI/MUNCH OPERNHUIS STRIEB
LENA KERN

Strauss

Der Rosenkavalier

In German with projected English titles

OCTAVIAN

Sophie Koch (FEB 8-20)
Alice Coote (MAR 4-13)

MARSCHALLIN

Amanda Majeski†

BARON OCHS

Matthew Rose*

SOPHIE

Christina Landshamer*

FANINAL

Martin Gantner

A SINGER

René Barbera‡

Production owned by
Bavarian State Opera.

CONDUCTOR

Edward Gardner*

ORIGINAL DIRECTOR

Otto Schenk*

REVIVAL DIRECTOR

Martina Weber*

DESIGNER

Jürgen Rose

LIGHTING DESIGNER

Duane Schuler

CHORUS MASTER

Michael Black

*LYRIC OPERA DEBUT
‡RYAN OPERA CENTER ALUMNI

NEW-TO-CHICAGO PRODUCTION

February 8 – March 13

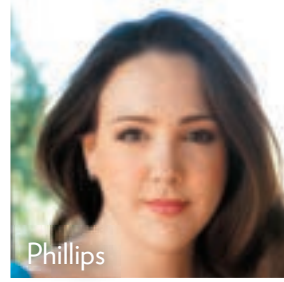
It's exactly what you want a Strauss opera to be – deliciously extravagant!

Can the elegantly alluring Marschallin find lasting happiness with her lover Octavian, who's half her age? Does the hot-blooded Baron really think his exalted position guarantees that young Sophie will be his wife? All bets are off when Sophie receives an engagement rose from the Baron – delivered by the devastatingly handsome Octavian.

Love, sex, fidelity, and aging are delicately explored in a masterwork that artfully blends laugh-out-loud humor with insightful poignancy.

Der Rosenkavalier is a grand event with more than 100 musicians, famous waltzes, and ravishing performances in store from **Alice Coote**, **Sophie Koch**, and **Amanda Majeski** – glorious singing actresses who have each triumphed at Lyric and internationally. And treat yourself to two eagerly awaited Lyric debuts: celebrated British bass **Matthew Rose** and silver-voiced German soprano **Christina Landshamer**.

Lyric Opera presentation generously made possible by an **Anonymous Donor** and **Mr. & Mrs. Dietrich M. Gross**.



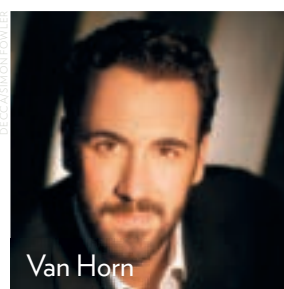
Phillips



Calleja



Cutler



Van Horn

MATTHIAS AUIS SALZBURG HES TVM ©
RECEIVING FROM POWER

Gounod

Romeo and Juliet

In French with projected English titles

ROMEO

Joseph Calleja (FEB 22-MAR 8)
Eric Cutler (MAR 11-19)

JULIET

Susanna Phillips[†]

FRIAR LAURENCE

Christian Van Horn[†]

STEPHANO

Marianne Crebassa^{*}

MERCUTIO

Joshua Hopkins

Production owned by
The Metropolitan Opera.

CONDUCTOR

Emmanuel Villaume

DIRECTOR

Bartlett Sher^{*}

SET DESIGNER

Michael Yeorgan

COSTUME DESIGNER

Catherine Zuber

LIGHTING DESIGNER

Jennifer Tipton

CHORUS MASTER

Michael Black

^{*}LYRIC OPERA DEBUT
[†]RYAN OPERA CENTER ALUMNI

NEW-TO-CHICAGO PRODUCTION

February 22 – March 19

He's a Montague and she's a Capulet – families who have hated each other for centuries. Yet when Romeo meets Juliet, they fall instantly and rapturously in love. Secretly, they marry – but Shakespeare's famed young couple is ultimately doomed. Everything that could have been is lost as they die tragically in each other's arms.

The world's most famous love story finds new dimension in Gounod's deeply romantic music. This is passion personified, from tender intimacy to ecstatic grandeur, including five iconic love duets and soaring music for the chorus and orchestra.

With her “exquisite” voice of “purity and bloom” *THE NEW YORK TIMES* **Susanna Phillips** will be a Juliet to remember, while **Joseph Calleja** and **Eric Cutler** embody all the elegance and golden ardor that Romeo demands.

Lyric Opera presentation generously made possible by the **NIB Foundation** and **Julie and Roger Baskes**.



April 29 - May 22, 2016

Rodgers & Hammerstein's

THE KING AND I

Shall we dance?

LYRIC PREMIERE

The King of Siam is an absolute ruler. But he meets his match in Anna, the feisty Welsh teacher he's hired to instruct his many wives and children in the ways of the "civilized" West and help him learn to lead his country into the modern world.

Two strong, passionate people from two very different cultures discuss, debate, disagree, and ultimately fall in love to the tune of some of Broadway's greatest songs – "Shall We Dance?," "I Whistle a Happy Tune," "Hello, Young Lovers," "I Have Dreamed," "We Kiss in a Shadow," "Something Wonderful," and more!

Based on an inspiring true story, *The King and I* is one of the most popular and groundbreaking musicals of all time. This production will marry huge Broadway power with pure Lyric spectacle.

Seize the moment and secure your tickets now!

Featuring members of the Lyric Opera Orchestra and Chorus.

THE KING AND I | Music by Richard Rodgers | Book by Oscar Hammerstein II | Lyrics by Oscar Hammerstein II | Based on *Anna and the King* by Margaret Landon | Original Choreography by Jerome Robbins

Lyric Opera premiere generously made possible by **The Negaunee Foundation**, two **Anonymous Donors**, and **Robert S. and Susan E. Morrison**.



GREG GORMAN/LOS ANGELES OPERA



TO MERECHT

Mesmerizing Voices. Superstar Status.

Plácido Domingo & Ana María Martínez WITH Sir Andrew Davis in Concert

Featuring the Lyric Opera Orchestra

**Saturday, January 9, 2016
at 7:30 pm**

He is one of the greatest, most beloved, and most influential singing actors in the history of our art form – a true legend who still reigns supreme as “The King of Opera.” *NEWSWEEK*

A Lyric favorite, she has a voice of incandescent beauty, with luminous Chicago portrayals including Donna Elvira, Marguerite, and Rusalka. She’s “among the top lyric sopranos of the day.” *OPERA MAGAZINE*

Together, they’ll thrill you in concert – and Lyric subscribers have priority access!

Exclusive Sponsor **BMO Harris Bank**

TWO DAZZLING EVENTS

Opera's most
stratospheric
stars are coming
to Lyric -
for unique,
one-night-only
performances!



*Glorious Voice. Unparalleled Artistry.
Serious Sex Appeal.*

Dmitri Hvorostovsky in Recital

Featuring Ivari Ilja, Pianist

**Friday, February 26, 2016
at 7:30 pm**

“Confidence, daring, exceptional technique and a caramel-colored voice that, if it were possible for a voice to float like a butterfly and sting like a bee, his can and does,” raves *THE WASHINGTON POST*. Now, hear this Siberian superstar in a rare and intimate Chicago appearance, and learn firsthand why star soprano Renée Fleming says, “There is no voice more beautiful than his.”

On sale only to subscribers this spring!

Exclusive Sponsor **Ann Ziff**



PHOTOS: ROBERT KUSEL AND DAN REIST

OPENING

SATURDAY, SEPTEMBER 26, 2015

NIGHT

RECEPTION AT 4PM | PERFORMANCE AT 5PM

Lyric's Opening Night has always been the social event of the season for Chicago – and this year, you can exchange into this can't-miss performance with no additional fee!

Enjoy a glamorous red-carpet entrance at the Civic Opera House with photographers on hand to capture every moment of the excitement. Mix and mingle amid the sparkling ambience with your fellow music lovers, and then settle in to experience Mozart's glorious masterpiece, *The Marriage of Figaro*, in a highly anticipated new production by Chicago Shakespeare Theater founder and artistic director Barbara Gaines.

If you'd like to continue your celebration at the opera house, the Pedersen Room and Florian Bistro will remain open for ticket-holders who wish to book reservations. For those interested in purchasing tickets for the Opera Ball, bring your appetite for fine cuisine and your dancing shoes, because a thrilling party awaits at the Hilton Chicago Grand Ballroom following the performance. Opera Ball tickets and premium packages available by calling the Women's Board Office at 312-827-5681.

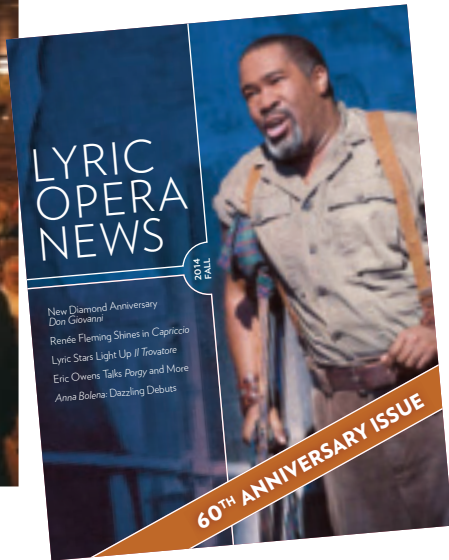
Opening Night sponsored by Aon.
Opera Ball sponsored by ITW and Northern Trust.



Free Pre-Opera Talks before every opera performance

Your ticket to the opera is also a ticket to learn more about the fascinating background of each production. You and your guests may arrive one hour before curtain time and enjoy a free, 30-minute pre-opera talk right in the opera house.

EXCLUDES OPENING NIGHT OF THE SEASON.



A subscription to *Lyric Opera News* and *Lyric Notes*

Twice a year, be the first to receive Lyric's glossy magazine and read in-depth interviews and behind-the-scenes features. And once a month, enjoy Lyric's e-newsletter delivered straight to your inbox!

Beyond THE Performance

EXPERIENCE MORE WITH LYRIC

Subscribing to Lyric means becoming part of Chicago's vibrant community of music lovers – and there are so many ways to socialize, learn more, and engage!

Lyric U Whether you're an opera aficionado or just getting acquainted with the art form, visit Lyric U on lyricopera.org to enhance your opera knowledge. Find recommended reading on each show, cast interviews, program notes, and more – plus, enjoy great video features with Lyric's artistic leadership that give you insights into how Lyric's seasons come together.

Part of the Innovation Initiative made possible by Patrick G. and Shirley W. Ryan.



Social Media You are Lyric's community – keep in touch with us and chat with fellow opera lovers on Lyric's active social media platforms.

8-OPERA SERIES

A Series

MOSTLY MONDAYS

Figaro
OCT 15 THU

Cinderella
OCT 26 MON

Wozzeck
NOV 16 MON

Widow
NOV 23 MON

Bel Canto
DEC 7 MON

Nabucco
FEB 9 TUE

Romeo
FEB 22 MON

Rosenkavalier
MAR 7 MON **6:30**

B Series

MOSTLY WEDNESDAYS

Figaro
SEP 30 WED

Cinderella
OCT 7 WED

Wozzeck
NOV 12 THU

Widow
NOV 25 WED

Bel Canto
JAN 13 WED

Nabucco
JAN 27 WED

Rosenkavalier
FEB 8 MON **6:30**

Romeo
MAR 16 WED

NOW 8 OPERAS!

C Series

MOSTLY FRIDAYS

Figaro
OCT 9 FRI

Cinderella
OCT 23 FRI

Widow
NOV 20 FRI

Bel Canto
DEC 10 THU

Nabucco
FEB 12 FRI

Rosenkavalier
MAR 4 FRI **6:30**

Romeo
MAR 11 FRI

Wozzeck
**YOU CHOOSE
YOUR DATE***

D Series

ALL SATURDAYS

Figaro
OCT 3

Cinderella
OCT 10

Wozzeck
NOV 7

Widow
NOV 14

Bel Canto
DEC 12

Nabucco
FEB 6

Rosenkavalier
FEB 20 **6:30**

Romeo
MAR 5

E Series

MOSTLY TUESDAYS

Figaro
OCT 6 TUE

Cinderella
OCT 13 TUE

Wozzeck
NOV 4 WED

Widow
NOV 17 TUE

Bel Canto
JAN 5 TUE

Rosenkavalier
FEB 16 TUE **6:30**

Romeo
MAR 8 TUE

Nabucco
**YOU CHOOSE
YOUR DATE***

MA Series

ALL SUNDAY
MATINEES

Cinderella
OCT 4

Figaro
OCT 18

Wozzeck
NOV 1

Widow
DEC 13

Bel Canto
JAN 17

Nabucco
JAN 31

Romeo
FEB 28

Rosenkavalier
MAR 13 **1PM**

NEW SERIES
SAVE 50%

Value Series[†]

MIXED WEEKDAYS

Figaro
SEP 30 WED

Cinderella
OCT 7 WED

Wozzeck
NOV 4 WED

Widow
NOV 17 TUE

Bel Canto
DEC 10 THU

Nabucco
JAN 27 WED

Rosenkavalier
FEB 8 MON **6:30**

Romeo
FEB 22 MON

6-OPERA SERIES

INCLUDES
OPENING NIGHT!

D1 Series

ALL SATURDAYS

Figaro
OCT 3

Cinderella
OCT 17

Wozzeck
NOV 7

Widow
NOV 28

Nabucco
JAN 23

Rosenkavalier
FEB 13 **6:30**

D2 Series

ALL SATURDAYS

Figaro
SEP 26 **5PM**

Cinderella
OCT 10

Widow
NOV 14

Bel Canto
DEC 12

Nabucco
FEB 6

Rosenkavalier
FEB 20 **6:30**

F Series

ALL SATURDAYS

Cinderella
OCT 17

Figaro
OCT 24

Wozzeck
NOV 21

Widow
NOV 28

Nabucco
JAN 23

Rosenkavalier
FEB 13 **6:30**

5-OPERA SERIES

A1 Series

ALL MONDAYS

Cinderella
OCT 26

Widow
NOV 23

Bel Canto
DEC 7

Romeo
FEB 22

Rosenkavalier
MAR 7 **6:30**

B1 Series

ALL WEDNESDAYS

Figaro
SEP 30

Wozzeck
NOV 4

Widow
NOV 25

Bel Canto
JAN 13

Nabucco
JAN 27

E1 Series

ALL TUESDAYS

Figaro
OCT 6

Widow
NOV 17

Bel Canto
JAN 5

Rosenkavalier
FEB 16 **6:30**

Romeo
MAR 8



4-OPERA SERIES

A2 Series
MOSTLY MONDAYS

Figaro
OCT 15 THU

Wozzeck
NOV 16 MON

Rosenkavalier
FEB 8 MON 6:30

Opera #4
YOU CHOOSE
YOUR DATE*

A3 Series*
ALL MONDAYS

Cinderella
OCT 26

Wozzeck
NOV 16

Rosenkavalier
FEB 8 6:30

Romeo
FEB 22

B2 Series
MIXED WEEKDAYS

Cinderella
OCT 13 TUE

Wozzeck
NOV 12 THU

Nabucco
FEB 9 TUE

Romeo
MAR 16 WED

B3 Series*
ALL WEDNESDAYS

Figaro
SEP 30

Wozzeck
NOV 4

Bel Canto
JAN 13

Romeo
MAR 16

INCLUDES
OPENING NIGHT!

C3 Series*
MOSTLY FRIDAYS

Figaro
SEP 26 SAT 5PM

Cinderella
OCT 23 FRI

Widow
NOV 20 FRI

Nabucco
FEB 12 FRI

E3 Series*
ALL TUESDAYS

Figaro
OCT 6

Widow
NOV 17

Bel Canto
JAN 5

Rosenkavalier
FEB 16 6:30

NOW 4 OPERAS!

F1 Series
MOSTLY SATURDAYS

Cinderella
OCT 7 WED

Figaro
OCT 24 SAT

Wozzeck
NOV 21 SAT

Romeo
MAR 5 SAT

4-OPERA MATINEE SERIES

MB Series
ALL WEDNESDAYS

Figaro
OCT 21

Widow
DEC 9

Nabucco
FEB 3

Romeo
MAR 2

MC Series
MOSTLY FRIDAYS

Cinderella
OCT 30 FRI

Widow
DEC 11 FRI

Bel Canto
JAN 8 FRI

Romeo
MAR 19 SAT

MG Series
MOSTLY THURSDAYS

Widow
DEC 3 THU

Romeo
FEB 25 THU

Rosenkavalier
MAR 10 THU 1PM

Opera #4
YOU CHOOSE
YOUR DATE*

NEW THIS SEASON: WEEKDAY MATINEE OPERA BUS!

Starting in 2015/16, Lyric Opera is pleased to launch motor coach service from a central North Shore location for weekday matinee performances. Park at a central meeting point and enjoy roundtrip transportation to the opera for just \$20! Details and bookings will launch at lyricopera.org/operabus on July 1, 2015.

Choose from over 20 custom series

Don't see a series that fits
your schedule or taste?
Create Your Own Series
options also available at
lyricopera.org/subscribe

* Seat locations may vary by opera & are seated after 8-opera fixed-seat subscriptions. Limited availability.

* Seats assigned after 8-opera series subscribers.

* New! You choose your date at time of order. Comparable seat locations assigned when possible.

Evenings are at 7:30pm except *Rosenkavalier* at 6:30pm and Opening Night 9/26/15 at 5pm.

Matinees are at 2pm except *Rosenkavalier* at 1pm.

Casts subject to change.

Save up to
50% off
 individual
 ticket prices
 when you
 subscribe!



SERIES	Number of Operas	Main Floor						Box	First Balcony				Upper Balcony		
		FIRST 22 ROWS		BB-FF	CENTER GG-MM	CENTER NN-TT	BALANCE GG-TT		DRESS CIRCLE		K-O	P-T	A-H	J-R	
		PRIME	BALANCE												A-E
A, B, E	YOUR PRICE	8	1424	880	880			1424	992				376	160	
	YOU SAVE		416	592	472			416	432				152	112	
C NOW 8 OPERAS!	YOUR PRICE	8	1494	880	880	654	445	348	1494	999	740	538	296	390	160
	YOU SAVE		346	592	472	410	251	180	346	425	356	230	192	138	112
D	YOUR PRICE	8	1720	1408	1224				1720	1288				480	232
	YOU SAVE		240	184	248				240	256				168	160
MA	YOUR PRICE	8	1720	1408	1224	952	656	392	1720	1288	984	688	472	480	304
	YOU SAVE		240	184	248	232	160	256	240	256	232	200	136	168	88

VALUE SERIES^S NEW SERIES NEW SAVINGS - 50% OFF		8 ⁺			736	676	532	348	264	920	712	548	384	244	264	136
					736	676	532	348	264	920	712	548	384	244	264	136
D1, D2	YOUR PRICE	6					714	492	294			738	516	354		
	YOU SAVE						174	120	192			174	150	102		
F	YOUR PRICE	6	1290	1056	918					1290	966				360	174
	YOU SAVE		180	138	186					180	192				126	120
A1, B1, E1	YOUR PRICE	5				400	265	200				410	275	185		
	YOU SAVE 40%					265	170	130				275	205	120		
A2, B2	YOUR PRICE	4				320	212	160				328	220	148		
	YOU SAVE 40%					212	136	104				220	164	96		
C3	YOUR PRICE	4 [*]	822	480	622	493	326	236			654	506	358	233	250	137
	YOU SAVE		113	271	69	54	37	43			73	57	41	26	29	14
A3, B3, E3	YOUR PRICE	4 [*]	796	440	596					796	628				224	100
	YOU SAVE		124	296	80					124	84				40	36
F1 NOW 4 OPERAS!	YOUR PRICE	4				347	236	187				358	259	175		
	YOU SAVE 40%					230	157	122				235	170	114		
MB, MC, MG	YOUR PRICE	4	600	440	480	396	260	160	600	496	412	284	180	188	100	
	YOU SAVE		320	296	196	136	88	104	320	216	136	100	64	76	36	

INTERESTED IN BUILDING YOUR OWN CUSTOM PACKAGE?

Create Your Own packages are also available, offering savings up to 30% with seat locations that vary between productions. Visit lyricopera.org/subscribe to explore!

CREATE YOUR OWN* (select 4 or more operas)/ O SERIES - Price for 4 weekdays shown	4-8 ⁺	828	552	608	480	312	236	828	640	492	344	220	236	124
	YOU SAVE	92	184	68	52	36	28	92	72	56	40	24	28	12
CREATE YOUR OWN* (select 4 or more operas)/ O SERIES - Price for 4 weekends shown	4-8 ⁺	884	596	664	532	368	292	884	696	548	400	272	292	176
	YOU SAVE	96	200	72	60	40	32	96	76	60	44	32	32	20

Initial offer pricing shown above includes discounts. Prices guaranteed through April 1 and are subject to change thereafter. Subscriptions not available in the blank areas above. ^SValue Series discount pricing does not carry over to exchanges/upgrades. Fees apply. ^{***} - See page 27 for details.

The best seats, flexibility, and great customer service – at the lowest prices of the season, up to 50% off individual ticket prices! Subscribe today and enjoy:

Easy Payment Plans

Just 25% down secures your series with no additional processing or handling fees.

Your Own Personal Seats

Subscribers may renew their seats for all the seasons to come—that’s why lifelong friendships often develop with subscriber-neighbors.

Easy Exchanges

If your schedule changes, it’s easy to exchange your seats online or via phone for another date of the same opera. *Fees may apply; no fees for 8-opera subscribers with five days notice excluding Value Series.*

TRADEONE™

When you subscribe for a 4-, 5-, or 6-opera series, you may customize your series with **TRADEONE**. This allows you to trade one opera in your series for one that is not. Just let us know which opera you want to trade when you subscribe or after you receive your tickets. *Fees apply.*

Children’s Prices for Every Opera

Children’s tickets are \$20-\$50 depending on your seat location. We’ll arrange your subscription seating so that you will all sit together.

Flexibility: Create Your Own Series

Can’t find a series that fits your needs? Pick the operas you want on dates that you can attend, and still save up to 40%. *Please note that your exact seat location will differ from date to date.*



Plus, subscribers get great perks:

- **Advance Ordering Privileges and Priority Seating for Special Events** Subscribers get early access to purchase tickets to one-night-only events, like Plácido Domingo and Ana María Martínez in Concert, and Dmitri Hvorostovsky in Recital.
- **Year-long subscriber discount on additional opera and musical tickets** Every opera and musical performance, all year long, you’ll receive a non-expiring subscriber discount of 10% on additional tickets. **New this year**, 8-opera subscribers receive 25% off all additional tickets to operas and *The King and I* through the April 1 renewal deadline – buy early and save!
- **Priority dining reservations at Lyric’s onsite restaurants**
- **Free replacement of lost tickets**

MONDAY	TUESDAY	WEDNESDAY	THURSDAY	FRIDAY	SATURDAY	SUNDAY
2015	SEP 22	SEP 23	SEP 24	SEP 25	SEP 26 C3-D2 FIGARO 5PM	SEP 27
SEP 28	SEP 29	SEP 30 B-B1-B3 FIGARO 7:30PM	OCT 1	OCT 2	OCT 3 D-D1 FIGARO 7:30PM	OCT 4 MA CINDERELLA 2PM
OCT 5	OCT 6 E-E1-E3 FIGARO 7:30PM	OCT 7 B-F1 CINDERELLA 7:30PM	OCT 8	OCT 9 C FIGARO 7:30PM	OCT 10 D-D2 CINDERELLA 7:30PM	OCT 11
OCT 12	OCT 13 E-B2 CINDERELLA 7:30PM	OCT 14	OCT 15 A-A2 FIGARO 7:30PM	OCT 16	OCT 17 F-D1 CINDERELLA 7:30PM	OCT 18 MA FIGARO 2PM
OCT 19	OCT 20	OCT 21 MB FIGARO 2PM	OCT 22	OCT 23 C-C3 CINDERELLA 7:30PM	OCT 24 F-F1 FIGARO 7:30PM	OCT 25
OCT 26 A-A1-A3 CINDERELLA 7:30PM	OCT 27	OCT 28	OCT 29	OCT 30 MC CINDERELLA 2PM	OCT 31	NOV 1 MA WOZZECK 2PM
NOV 2	NOV 3	NOV 4 E-B1-B3 WOZZECK 7:30PM	NOV 5	NOV 6	NOV 7 D-D1 WOZZECK 7:30PM	NOV 8
NOV 9	NOV 10	NOV 11	NOV 12 B-B2 WOZZECK 7:30PM	NOV 13	NOV 14 D-D2 WOZZECK 7:30PM	NOV 15
NOV 16 A-A2-A3 WOZZECK 7:30PM	NOV 17 E-E1-E3 WIDOW 7:30PM	NOV 18	NOV 19	NOV 20 C-C3 WOZZECK 7:30PM	NOV 21 F-F1 WOZZECK 7:30PM	NOV 22
NOV 23 A-A1 WIDOW 7:30PM	NOV 24	NOV 25 B-B1 WIDOW 7:30PM	NOV 26 THANKSGIVING	NOV 27	NOV 28 F-D1 WIDOW 7:30PM	NOV 29
NOV 30	DEC 1	DEC 2	DEC 3 MG WIDOW 2PM	DEC 4	DEC 5	DEC 6
DEC 7 A-A1 BEL CANTO 7:30PM	DEC 8	DEC 9 MB WIDOW 2PM	DEC 10 C BEL CANTO 7:30PM	DEC 11 MC WIDOW 2PM	DEC 12 D-D2 BEL CANTO 7:30PM	DEC 13 MA WIDOW 2PM
2016	JAN 5 E-E1-E3 BEL CANTO 7:30PM	JAN 6	JAN 7	JAN 8 MC BEL CANTO 2PM	JAN 9 DOMINGO 7:30PM	JAN 10
JAN 11	JAN 12	JAN 13 B-B1-B3 BEL CANTO 7:30PM	JAN 14	JAN 15	JAN 16	JAN 17 MA BEL CANTO 2PM

MONDAY	TUESDAY	WEDNESDAY	THURSDAY	FRIDAY	SATURDAY	SUNDAY
JAN 18	JAN 19	JAN 20	JAN 21	JAN 22	JAN 23 F-D1 NABUCCO 7:30PM	JAN 24
JAN 25	JAN 26	JAN 27 B-B1 NABUCCO 7:30PM	JAN 28	JAN 29	JAN 30	JAN 31 MA NABUCCO 2PM
FEB 1	FEB 2	FEB 3 MB NABUCCO 2PM	FEB 4	FEB 5	FEB 6 D-D2 NABUCCO 7:30PM	FEB 7
FEB 8 B-A2-A3 ROSENKAVALIER 6:30PM	FEB 9 A-B2 NABUCCO 7:30PM	FEB 10	FEB 11	FEB 12 C-C3 NABUCCO 7:30PM	FEB 13 F-D1 ROSENKAVALIER 6:30PM	FEB 14
FEB 15	FEB 16 E-E1-E3 ROSENKAVALIER 6:30PM	FEB 17	FEB 18	FEB 19	FEB 20 D-D2 ROSENKAVALIER 6:30PM	FEB 21
FEB 22 A-A1-A3 ROMEO 2PM	FEB 23	FEB 24	FEB 25 MG ROMEO 2PM	FEB 26 HVOROSTOVSKY 7:30PM	FEB 27	FEB 28 MA ROMEO 2PM
FEB 29	MAR 1	MAR 2 MB ROMEO 2PM	MAR 3	MAR 4 C ROSENKAVALIER 6:30PM	MAR 5 D-F1 ROMEO 7:30PM	MAR 6
MAR 7 A-A1 ROSENKAVALIER 6:30PM	MAR 8 E-E1 ROMEO 7:30PM	MAR 9	MAR 10 MG ROSENKAVALIER 1PM	MAR 11 C ROMEO 7:30PM	MAR 12	MAR 13 MA ROSENKAVALIER 1PM
MAR 14	MAR 15	MAR 16 B-B2-B3 ROMEO 7:30PM	MAR 17	MAR 18	MAR 19 MC ROMEO 2PM	MAR 20
APR 25	APR 26	APR 27	APR 28	APR 29 KING AND I 7PM	APR 30 KING AND I 7PM	MAY 1 KING AND I 1:30PM
MAY 2	MAY 3	MAY 4	MAY 5 KING AND I 1:30PM & 7PM	MAY 6 KING AND I 7PM	MAY 7 KING AND I 1:30PM & 7:30PM	MAY 8 KING AND I 1:30PM
MAY 9	MAY 10 KING AND I 7PM	MAY 11 KING AND I 1:30PM	MAY 12 KING AND I 1:30PM & 7PM	MAY 13 KING AND I 1:30PM	MAY 14 KING AND I 1:30PM & 7PM	MAY 15 KING AND I 1:30PM
MAY 16	MAY 17 KING AND I 1:30PM & 7PM	MAY 18 KING AND I 7PM	MAY 19 KING AND I 7PM	MAY 20 KING AND I 7PM	MAY 21 KING AND I 1:30PM & 7PM	MAY 22 KING AND I 1:30PM

KEY

MATINEE	EVENING	MULTI-SHOW	SPECIAL EVENT
---------	---------	------------	---------------

SCENIC DESIGN
FOR THE WORLD
PREMIERE OF
BEL CANTO

SCENIC DESIGN FOR BEL CANTO BY DAVID KONINS

**SUBSCRIBE NOW
SAVE UP TO 50%**

25% down secures your seats | 4-opera series from just \$100!

Only subscribers have priority for one-night-only events with Plácido Domingo, Ana María Martínez, and Dmitri Hvorostovsky!

SUBSCRIBE NOW 312 827 5600 | LYRICOPERA.ORG

LYRIC OPERA 2015/16 SEASON

9 NEW-TO-CHICAGO PRODUCTIONS

Anthony Freud General Director
Sir Andrew Davis Music Director
Renée Fleming Creative Consultant

LYRIC OPERA OF CHICAGO
20 NORTH WACKER DRIVE
CHICAGO ILLINOIS 60606

NON-PROFIT ORG.
U.S. POSTAGE
PAID
CHICAGO, IL
PERMIT NO. 6047