

# Lyric

LYRIC OPERA OF CHICAGO

FROM: Lisa Middleton, Director of Marketing

MEDIA INQUIRIES:

Holly H. Gilson ([hgilson@lyricopera.org](mailto:hgilson@lyricopera.org)/312-827-5939)

Magda Krance ([mkrance@lyricopera.org](mailto:mkrance@lyricopera.org)/312-827-5924)

Kamaria Morris ([kmorris@lyricopera.org](mailto:kmorris@lyricopera.org)/312-827-5928)

IMMEDIATE RELEASE:

Wednesday, July 27, 2016

LYRIC OPERA OF CHICAGO

20 North Wacker Drive

Chicago, IL 60606

[lyricopera.org](http://lyricopera.org)

#LyricChicagoVoices

## **Chicago Voices Concert**

**A One-Night Only, Multi-Genre Concert Celebrating Chicago's Diverse Musical Past and Present!**

Saturday, February 4 at 7:30pm, Lyric's Civic Opera House

Tickets are on sale now!



Chicago – Lyric Opera and its Creative Consultant **Renée Fleming** will present the **Chicago Voices Concert**, a special, one-night only concert featuring superstar artists from a variety of musical genres paying tribute to the city's diverse musical heritage and continuous innovation. The guest artists, all with deep ties to Chicago, will perform blues, jazz, soul, folk, gospel, and classical – musical styles whose roots owe much to this city.

The **Chicago Voices Concert** is part of **Chicago Voices**, a multiyear, multifaceted initiative celebrating the stories of Chicago communities and Chicago's vibrant vocal culture. The celebratory concert will take place February 4, at 7:30pm at Lyric's Civic Opera House and single tickets are now on sale beginning at \$49. Proceeds from the concert will support Lyric and Lyric Unlimited events and activities.

The evening will feature performances and musical collaborations by:

**Renée Fleming** - internationally celebrated soprano, four-time Grammy winner, and Lyric's Creative Consultant since 2010. Known as the "people's diva," she brought her voice to a vast new audience in 2014, as the first classical artist to sing the National Anthem at the Super Bowl. Fleming, who is curating the concert, has spearheaded the Chicago Voices initiative since its launch in January, 2016.

*"I am so excited about the Chicago Voices Concert, a chance to celebrate all of the amazing musical riches of this city," said Fleming. "What a thrill, to share the stage with phenomenal vocalists from every genre, all with ties to Chicago. I expect it to be an unforgettable evening."*



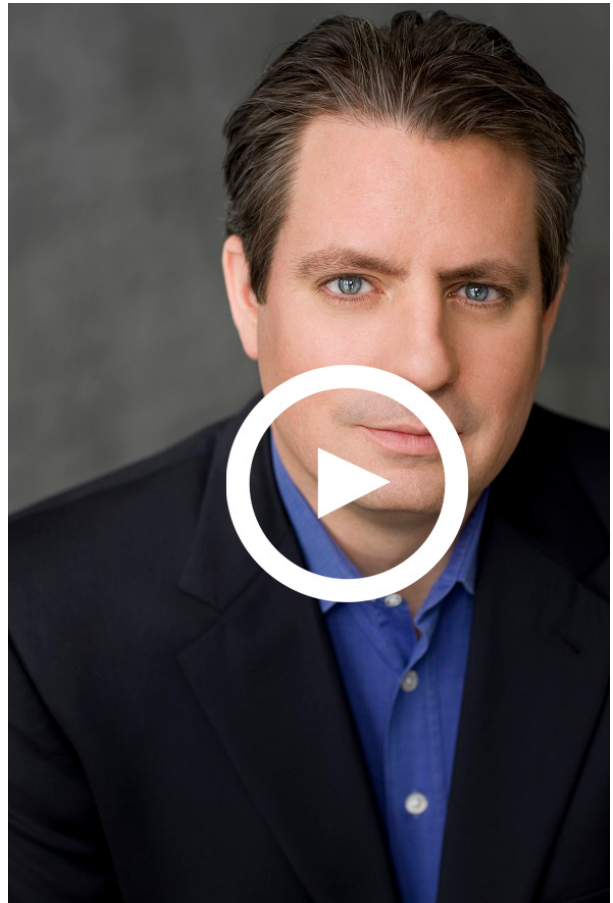
**Shemekia Copeland** - Grammy-nominated blues singer who recently headlined the Chicago Blues Festival. A Chicago resident, Copeland was officially declared "The New Queen of the Blues" by the City of Chicago and the State of Illinois. Copeland has performed in thousands of venues throughout the world and has sung with musical legends including Eric Clapton, B.B. King, Bonnie Raitt, and Mick Jagger. (shemekiacopeland.com)

*"I am absolutely thrilled that Renée has invited me to take part in the Chicago Voices," Copeland said. "First, because I am a huge fan of hers, and second, because I'll have a chance to share the stage and work with other artists I admire so much. John Prine? It doesn't get any better than that. I can't wait!"*



**Matthew Polenzani** - Evanston native, world-renowned tenor, alumnus of Lyric's Ryan Opera Center and frequent star at Lyric. With credits spanning the globe, Polenzani is a favorite at the Metropolitan Opera, and has also performed starring roles with Opéra National de Paris, San Francisco Opera, Seattle Opera and the Los Angeles Opera, among others. In Lyric's upcoming season, Polenzani will sing the role of Tamino in Mozart's *The Magic Flute* (*Die Zauberflöte*).  
(matthewpolenzani.com)

*Polenzani said, "I'm thrilled to once again be back on the Lyric stage, this time to pay homage to Chicago's rich and varied musical culture. The concert will surely be a night to remember."*



**John Prine** - recently inducted into the Grammy Hall of Fame, legendary folk singer and songwriter. Born in Maywood, Illinois, Prine began his career in Chicago, singing original songs in local clubs. Prine went on to write songs subsequently recorded by Johnny Cash, the Everly Brothers, Carly Simon, Norah Jones, George Strait, Miranda Lambert, and many others, in addition to

his own successful performing career. Prine's upcoming album, *For Better, or Worse*, a collection of duets with female recording artists including Lee Ann Womack, Miranda Lambert and Kacey Musgraves, will be released September 30. (johnprine.net)

*"I am proud to call Chicago my home town, and especially proud that it is home to some of the most iconic music of our time," said Prine. "It is always special to perform on stage in the city I know and love and this opportunity to pay tribute to Chicago vocal legends is a great honor."*



**The Handsome Family** - comprised of husband-and-wife duo Brett and Rennie Sparks, an alternative/country/indie folk group formed in Chicago. With their upcoming tenth studio album slated for a September release, The Handsome Family's music mixes country instrumentation with haunting, surrealist lyricism. Their song "Far From Any Road" gained worldwide fame when it was chosen as the theme song for the first season of HBO's hit series, *True Detective*. (handsomefamily.com)

*"Chicago is a one-of-a-kind city for music. We're honored to take part in this concert celebrating the place we began to sing," said the couple.*



Additional artists will be announced at a future date.

Music director for the concert is five-time Jeff award winner **Doug Peck**, who has previously directed musical productions, concerts, and galas for The Goodman Theatre, Chicago Shakespeare Theater, Court Theatre, the Chicago Humanities Festival, the Ravinia Festival and The Auditorium Theatre.

Concert tickets can be purchased [here](#) or by calling 312-827-5600. Premium Dinner Packages which include main floor prime and box seating are available by calling 312.827.5682.

Honorary advisors for the Chicago Voices Concert are **Shemekia Copeland, Kurt Elling, Herbie Hancock, Jane Lynch, Matthew Polenzani, and John Prine.**

The **Chicago Voice Concert** is generously made possible by Lead Sponsor **Liz Stiffel** and Supporting Sponsor **J. Thomas Hurvis.**

#### About Lyric

Lyric Opera of Chicago's mission is to express and promote the life-changing, transformational, revelatory power of great opera. Lyric exists to provide a broad, deep, and relevant cultural service to Chicago and the nation, and to advance the development of the art form.

Founded in 1954, Lyric is dedicated to producing and performing consistently thrilling, entertaining, and thought-provoking opera with a balanced repertoire of core classics, lesser-known masterpieces, and new works; to creating an innovative and wide-ranging program of community engagement and educational activities; and to developing exceptional emerging operatic talent.

Under the leadership of general director Anthony Freud, music director Sir Andrew Davis, and creative consultant Renée Fleming, Lyric strives to become The Great North American Opera Company for the 21st century: a globally significant arts organization embodying the core values of excellence, relevance, and fiscal responsibility. Visit [www.lyricopera.org](http://www.lyricopera.org) for more information.

#### About Lyric Unlimited

**Lyric Unlimited** is a long-term, evolving initiative that encompasses company activities that are not part of Lyric's mainstage opera season. Its mission is to provide a relevant cultural service to communities throughout the Chicago area and to advance the development of opera by exploring how opera as an art form can resonate more powerfully with people of multiple backgrounds, ethnicities, and interests. It also leads the development of innovative partnerships with a wide range of cultural, community, and educational organizations to create a breadth of programming through which Chicagoans of all ages can connect with Lyric. In the 2014/15 season, more than 126,000 children, students, and adults participated in Lyric Unlimited activities. For more information about Lyric Unlimited program offerings, visit [lyricopera.org/lyricunlimited](http://lyricopera.org/lyricunlimited).

###



[Unsubscribe](#) | [Forward](#) | [View in browser](#)

Lyric Opera of Chicago | 20 N. Wacker Drive | Chicago, IL 60606