

## 2021 SEASON

Blue  
Samson and Delilah  
The Elixir of Love  
The Marriage of Figaro  
The Rake's Progress  
Singin' in the Rain  
Davis Conducts Beethoven 9  
Christine Goerke in Recital

### ANTHONY FREUD

General Director, President & CEO

### SIR ANDREW DAVIS

Music Director

### ENRIQUE MAZZOLA

Music Director Designate

Lyric

# The music will be back.

2020 has represented a challenging and surreal time for every one of us. At Lyric, we work in an industry where we are always prepared for the unexpected – that's the thrill of live theater. But as we navigate the realities of a public health crisis, we've found ourselves in uncharted territory. We've worked to respond swiftly and transparently, to stay in close touch with our Lyric family, and to take care of one another in the best way possible during these difficult times.

As we weather this storm, we've been deeply moved by the sense of solidarity within our cultural community. The response from our audience has been to express support for our institution, concern for our wonderful artists and staff, and hope – hope born from the knowledge that in a world that is focused on essential services, the power of the arts to lift us up, carry us through times of crisis, and bring us together has never been more essential.

We know that live performances will return – but only with the support of people like you, who stand strong with us by subscribing and, when possible, supporting us with a contribution. Now and always, there is nobody who is more important to Lyric than the people we serve, and we are poised and ready to welcome you back with great performances and our ongoing gratitude.

In the meantime, please be well and safe, thank you most sincerely for your support, and until we are together again, I wish you music that buoys your spirits in your everyday life.

Sincerely



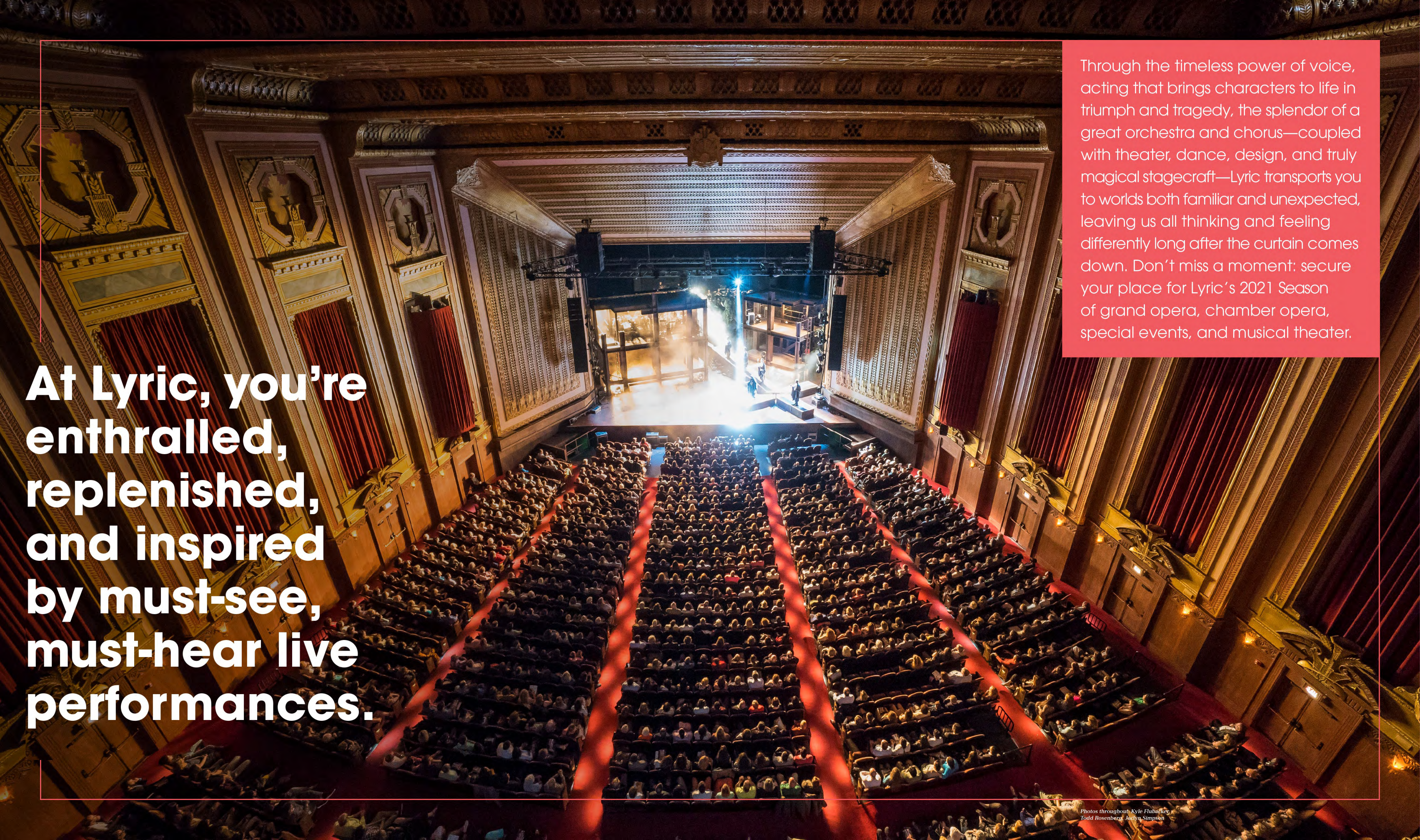
**Anthony Freud OBE**

General Director, President & CEO  
The Women's Board Endowed Chair



Sir Andrew Davis and Anthony Freud





**At Lyric, you're  
enthralled,  
replenished,  
and inspired  
by must-see,  
must-hear live  
performances.**

Through the timeless power of voice, acting that brings characters to life in triumph and tragedy, the splendor of a great orchestra and chorus—coupled with theater, dance, design, and truly magical stagecraft—Lyric transports you to worlds both familiar and unexpected, leaving us all thinking and feeling differently long after the curtain comes down. Don't miss a moment: secure your place for Lyric's 2021 Season of grand opera, chamber opera, special events, and musical theater.



January  
15, 17, 20,  
22, 23, 24

# BLUE

MUSIC BY JEANINE TESORI  
LIBRETTO BY TAZEWELL THOMPSON



The Kama Photography  
The Glimmerglass Festival/photo by Karli Cadel

Conducted by Lyric Music Director  
Designate Enrique Mazzola



## MIDWEST PREMIERE

Sung in English with projected English titles

Award-winning composer Jeanine Tesori and librettist Tazewell Thompson's urgent new opera, *Blue*, tells the story of a Black couple who anticipate the birth of their son with hope and fear. As the boy grows into a teenager, the mother worries for his future; the father prepares him for the realities of 21st Century America, while wrestling with his own identity as a "Black man in blue." When tragedy strikes, the family is forced to navigate a devastating reality seeking answers and support from their church and community. Called "powerful...one of the most elegant librettos I've heard in a long time" by *The New York Times*, join us for the anticipated Midwest premiere of this universally resonant opera.

Presented in collaboration with  
**Chicago Shakespeare Theater at The Yard**  
Navy Pier, 800 E. Grand Ave, Chicago

Conductor	<b>Enrique Mazzola</b>
Director	<b>Tazewell Thompson*</b>
Set Designer	<b>Donald Eastman</b>
Costume Designer	<b>Jessica Jahn</b>
Lighting Designer	<b>Robert Wierzel</b>

*Co-production with Lyric Opera of Chicago,  
The Glimmerglass Festival, and Washington  
National Opera*

Lyric premiere of *Blue* is made possible by support from **Gene and Jean Stark, Allstate Insurance Company,** an **Anonymous Donor, Baker & McKenzie, BMO Harris Bank, Conagra Brands Foundation,** the **Eisen Family Foundation, Mary Patricia Gannon, Virginia and Gary Gerst, Eric and Deb Hirschfield,** the **Lauter McDougal Charitable Fund, Magellan Corporation,** and **Mary Stowell,** with additional support from **Drs. Walter and Anne-Marie Bruyninckx, James R. Grimes,** and **Debbie K. Wright**

\* Lyric debut

January  
23, 29  
February  
1, 4, 7, 10, 13

SAINT-SAËNS

# Samson & Delilah

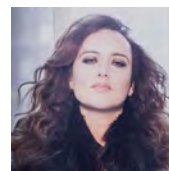


Marty Sohl / Metropolitan Opera

## NEW-TO-CHICAGO PRODUCTION

Sung in French with projected English titles

Visual, musical, and vocal magnificence reigns onstage at Lyric in the retelling of this powerfully dramatic biblical tale. Behold Samson the Israelite, greatest of all heroes, a role made for a true heroic tenor. And behold Delilah, the Philistine temptress, who uses all her feminine allure to learn the secret of Samson's might. Thus the stage is set for one of the most stupendous climactic scenes to be seen in an opera house. Along the way are sensuously beautiful melodies, including Delilah's mesmerizing "Mon coeur s'ouvre à ta voix" and a wild bacchanale that truly sets the stage ablaze with excitement.



**DELILAH**  
Clémentine  
Margaine



**SAMSON**  
Brandon  
Jovanovich



**HIGH PRIEST**  
Quinn Kelsey<sup>+</sup>

Conductor  
Original Director  
Revival Director  
Designer  
Lighting Designer  
Chorus Master

**Emmanuel Villaume**  
**Elijah Moshinsky**  
**Peter McClintock**  
**Richard Hudson**  
**Duane Schuler**  
**Michael Black**

*This production premiered at The Metropolitan Opera on February 13, 1998. All scenery, properties, and costumes constructed by The Metropolitan Opera shops.*

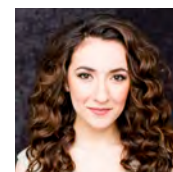
<sup>+</sup> Ryan Opera Center alumnus



January  
30  
February  
3, 6, 9,  
12, 14

# The Elixir of Love

DONIZETTI



**ADINA**  
Rosa Feola  
TBA (2/14)



**NEMORINO**  
Matthew  
Polenzani\*



**DULCAMARA**  
Nicola  
Alaimo



**BELCORE**  
Andrzej  
Filończyk\*

Conductor

Director

Designer

Lighting Designer

Chorus Master

**Eun Sun Kim\***

**Daniel Slater\***

**Robert Innes Hopkins**

**Simon Mills\***

**Michael Black**

*A co-production of Lyric Opera of Chicago  
and San Francisco Opera, originally created  
by Opera North, UK.*

## PRODUCTION SPONSOR

**Marlys A.  
Beider**

\* Lyric debut | + Ryan Opera Center alumnus



Pittsburgh Opera /  
c. 2018 David Bachman Photography



March

14, 17, 20,  
23, 26, 30

April

1, 7, 9, 11

# The Marriage of Figaro

MOZART

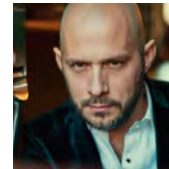


Michael Brosilow

## ORIGINAL LYRIC OPERA PRODUCTION

Sung in Italian with projected English titles

Mozart's sublime comedic masterpiece about relationships and human nature takes place on a single crazy day. The Count's valet, Figaro, is engaged to the Countess's maid, Susanna. The only problem is that the Count is eager to exercise his right as lord of the manor and have his way with Susanna. But the endlessly resourceful Susanna is too smart for him, and the two servants and the Countess join together to get the better of the Count. Will true love prevail? Find out as Mozart's incomparable music illuminates every moment, showing us these wonderful characters with all their vulnerabilities and virtues.



**FIGARO**  
Alex  
Esposito\*



**SUSANNA**  
Ying  
Fang



**COUNTESS**  
Federica  
Lombardi\*



**COUNT**  
Gordon  
Bintner\*



**CHERUBINO**  
Kayleigh  
Decker\*

Conductor

Director

Set Designer

Costume Designer

Lighting Designer

Chorus Master

**Sir Andrew Davis**

**Barbara Gaines**

**Jim Noone**

**Susan Mickey**

**Robert Wierzel**

**Michael Black**

## PRODUCTION SPONSORS

**The Negaunee  
Foundation**

**Sylvia Neil and  
Daniel Fischel**

**Randy L. and  
Melvin R. Berlin**

*\*deceased*

**BULLEY &  
ANDREWS**  
Building Matters®

\* Lyric debut | + Ryan Opera Center alumna



March  
21, 24, 27, 31  
April  
3, 6

STRAVINSKY

# The Rake's Progress



Karen Almond/Portland Opera

## NEW-TO-CHICAGO PRODUCTION

Sung in English with projected English titles

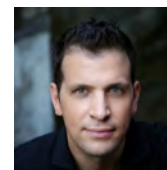
At last this English-language masterpiece makes its eagerly awaited return to the Lyric stage for the first time in more than a quarter-century. A simple young man from the country inherits a fortune and longs for the excitement of London. Leaving the girl he loves, he travels there escorted by the devil, who leads him into all manner of temptation – and ultimately, to total disaster. Tom Rakewell, his devoted Anne Trulove, the devil Nick Shadow, and the bearded lady Baba the Turk (whom Nick persuades Tom into marrying) are among 20th-century opera's most memorable characters. They're brought to life through music that is sparkling, lyrical, and endlessly imaginative in an iconic production designed by famed artist David Hockney.



**TOM  
RAKEWELL**  
Andrew  
Staples



**ANNE  
TRULOVE**  
Janai  
Brugger



**NICK  
SHADOW**  
Luca  
Pisaroni



**BABA  
THE TURK**  
Alice  
Coote

Conductor  
Original Director  
Revival Director  
Designer  
Lighting Designer  
Chorus Master

**Sir Andrew Davis**  
**John Cox**  
**Roy Rallo**  
**David Hockney**  
**Chris Maravich**  
**Michael Black**

*Originally built by San Francisco Opera. Scenery and costumes provided by Pittsburgh Opera.*

## PRODUCTION SPONSORS

**Henry and Gilda  
Buchbinder  
Family**

**Cynthia M.  
Sargent**

**Virginia  
Tobiason**



# Christine Goerke in Recital

*Malcolm Martineau, pianist*

“

**YOU HAD TO  
MARVEL AT HER  
TECHNIQUE AND  
THE POTENCY  
OF HER VOCAL  
INSTRUMENT.”**

*Boston Globe*

After her triumphs on Lyric's stage in riveting performances as Brünnhilde in *Die Walküre* and *Siegfried*, the title role of *Elektra*, and Cassandre in *Les Troyens*, Christine Goerke returns to Lyric for what promises to be a thrilling vocal recital. The world-renowned American soprano's richly vibrant voice, flawless musicianship, and celebrated stylistic versatility have been acclaimed in recitals all over America. With her passionate musical curiosity and her wonderful ability to reveal the essence of any music she performs, Christine's artistry will once again captivate the Lyric audience. Count on her recital being one of Chicago's most memorable musical events of the 2020/21 Season!

**Sunday,  
March 7,  
2021, 3pm**

*Arielle Doneson*

**Saturday,  
April 10,  
2021,  
7pm**

## A Knight to Celebrate

### **Beethoven Symphony No. 9**

Featuring the Lyric Opera Orchestra  
and Chorus

#### **Honoring Sir Andrew Davis**

Lyric will celebrate Sir Andrew Davis's magnificent two-decade tenure as music director with one of his favorite works, never previously performed at Lyric: Beethoven's enthralling, life-enhancing Symphony No. 9, the "Choral," music's most exalted hymn to the human spirit. Sir Andrew will conduct a superb vocal quartet with the wonderful Lyric Opera Orchestra and Chorus. The concert will begin with a new choral work by Sir Andrew's son, Ed Frazier Davis, himself an impressively gifted composer.

*A Knight to Celebrate Sponsor Committee: Ann and Reed Coleman, Allan and Elaine Muchin, Sylvia Neil and Daniel Fischel, Richard O. Ryan, the Donna Van Eekeren Foundation, and Mr. and Mrs. William C. Vance (committee in formation)*

**Join Sir Andrew for dinner following the performance. Please call 312.827.5688 to purchase tickets to this limited-availability event.**

*Todd Rosenberg*



June  
4-27

COMDEN, GREEN, FREED & BROWN

# SINGIN' IN THE RAIN

## LYRIC PREMIERE NEW-TO-CHICAGO PRODUCTION

One of the most joyously exhilarating of all movie musicals, now onstage and more magical than ever! Revel in the glamour of Hollywood in the Roaring Twenties, when the “talkies” were taking over from silent films. The romance between matinee idol Don Lockwood and budding actress Kathy Selden, the machinations of squeaky-voiced star Lina Lamont, and the lovable deviousness of Don’s best friend, Cosmo Brown, combine with spectacular dancing and unforgettable songs. It’s pouring—and you, too, will be ready to kick up your heels in the rain!

Conductor	<b>Gareth Valentine</b>
Director	<b>Robert Carsen</b>
Set Designer	<b>Tim Hatley</b>
Costume Designer	<b>Anthony Powell</b>
Lighting Designers	<b>Robert Carsen</b> <b>Giuseppe Di Iorio</b>
Choreographer	<b>Stephen Mear</b>

*Screenplay by Betty Comden and Adolph Green.  
Songs by Arthur Freed and Nacio Herb Brown.  
Based on the classic Metro-Goldwyn-Mayer film,  
by special arrangement with Warner Bros. Theatre  
Ventures, Inc.*

*A production created by the Théâtre  
du Châtelet, Paris.*

## PRODUCTION SPONSORS

<b>The Negaunee Foundation</b>	<b>The Davee Foundation</b>
------------------------------------	---------------------------------

<b>Donna Van Eekeren Foundation</b>	<b>Susan and Robert Morrison</b>
---	--------------------------------------

Major in-kind audio support  
provided by  
**SHURE®**

**SAVE THE DATE**  
**Saturday, June 5, 2021**  
Join us for the Spring  
Musical Celebration  
hosted by the Women’s  
Board and the Guild Board  
of Directors. Please call  
312.827.5682 to reserve  
your spot!



Marie-Noëlle Robert/Théâtre du Châtelet



A photograph of a diverse group of people, primarily Black, clapping and smiling. In the foreground, a woman with short dark hair and hoop earrings is smiling broadly. To her right, a man with glasses is also smiling. In the background, other people are visible, some with their hands raised in applause. The lighting is warm and the atmosphere is joyful.

# Secure your place for Lyric's 2021 Season of grand opera, chamber opera, special events, and musical theater.

With captivating classics and several new-to-Chicago productions, there's a lot you can look forward to enthusiastically. And to ensure you don't miss connecting with a cherished memory—or miss making a new one—subscribe now. With multiple fixed series—and a flexible Create Your Own option—there's a subscription for every schedule and budget. Whatever option you choose, you'll know that you're a valued member of the Lyric family.



# More reasons to join us

## BENEFITS JUST FOR YOU

When you purchase a season package, you open up a host of benefits tailored just for you, including fee-free exchanges up to five days before a performance, the option to trade one show in your package for a show that isn't in your package (fees apply), preferred access to special events, discounted parking, payment plans, and more.

## THANKS TO A GENEROUS GIFT FROM AN ANONYMOUS DONOR IN SUPPORT OF LYRIC'S PATRON ACCESSIBILITY INITIATIVE, NEW SEATS ARE COMING IN FALL 2020. YOUR LYRIC OPERA HOUSE EXPERIENCE WILL BE MORE COMFORTABLE THAN EVER BEFORE. SO WHAT DOES THIS MEAN?

- Comfortable, ergonomically designed cushions and soft-close seat technology for everyone in the house.
- Wider aisles for easier and more accessible patron entrance and egress.
- Offset seating on the Main Floor that will allow Main Floor patrons a better view to align with the inclined seating on upper floors.
- A new section, Main Floor Select, of the very best seats in the front of the Main Floor Prime section. Main Floor Select ticketholders receive free "anytime exchanges"—right up until the day of show, season-long free coatcheck, and the most up-close-and-personal view in the house!

Visit [lyricopera.org/subscribe](https://lyricopera.org/subscribe) and join us!



# Create Your Own (CYO) package!

As the title says, you may choose any title, any date, and any seat in the house to put together your own dream package of three or more performances—and still save up to 25%!!

And that savings increases as show prices rise with demand! Locking in your CYO season tickets is a great way to ensure you're getting the best seats and the best prices of the year.

## PUTTING TOGETHER A CUSTOM CYO PACKAGE IS EASY:

- Choose 3 to 8 shows and dates from the calendar on the back cover inside spread.
- Choose the seating area you'd like for each performance. Mix and match as you wish!
- Attend and enjoy!

## HERE ARE SOME CYO SAMPLE PACKAGES FOR YOU TO CONSIDER:

### Love new and rarely performed works?

*Samson and Delilah*  
*Blue*  
*The Rake's Progress*

### Are you into greatest hits and musicals?

*The Marriage of Figaro*  
*Singin' in the Rain*  
Beethoven Symphony No. 9 with Sir Andrew Davis

### If love stories leave you wanting more:

*Samson and Delilah*  
*The Elixir of Love*  
*Singin' in the Rain*

## Select special events may be included as a building block for Create Your Own but may not be eligible for CYO discounts.

Please note: Family Day, Backstage Tours, and the Opera Insider series are not eligible for CYO discounts and do not count towards your CYO package.





Beyond great performances, and beyond the boundaries that often define opera companies, Lyric ignites creativity across Chicago. Through innovative learning opportunities, creative exploration, and artistic creation and collaboration, Lyric, with your support, encourages tens of thousands of students, educators, and families from neighborhoods across the city to share their voices and embrace the joy, power, and relevance of opera as a catalyst for growth and change.

**As part of the  
Lyric family, you  
are connected to  
one of Chicago's  
preeminent,  
nonprofit cultural  
institutions.**



# Benefits & beyond

Join the Lyric family and get special benefits along with the best prices of the season, including priority access, event invitations, and more.

## **FREE PRE-OPERA TALKS**

Arrive one hour before curtain time and enjoy an engaging overview of each opera's music, characters, composer, and more.

## **INVITATIONS TO EXCLUSIVE EVENTS**

You'll be invited to exclusive events throughout the season; including the exclusive Season Preview event each year!

## **FIRST IN LINE**

All subscribers get priority renewal, the best seats before tickets go on sale to the general public, and early access to special events.

## **SPECIAL PRICES**

Subscribers save 10% on any additional opera and musical tickets and receive periodic special offers throughout the season.

## **NO EXCHANGE FEES**

Exchanges are free for subscribers up to five days before a performance. Fees apply to upgrades in seating section or date. Value Dates can only be exchanged at no cost for other Value Dates.

## **TRADEONE™**

Subscribers to fixed 4-, 5-, or 6-opera series may trade one opera in their lineup for one that is not. Fees apply.

## **EASY PAYMENT PLANS**

Just 25% down secures your series with no additional processing or handling fees. Call us for a custom payment plan that works for you!

## **DISCOUNTED PARKING**

Lyric subscribers enjoy a special low rate of \$12 when purchased in advance at Poetry Garage. Offer valid weeknights from 3pm-3am and up to 12 hours on weekends. Not valid for weekday matinees. Visit [thepoetrygarage.com](http://thepoetrygarage.com).

Casting and programs subject to change but specified in good faith at time of printing.

# Support music that moves you

This is YOUR Lyric.

It takes a big, talented family to present must-see, must-hear operas and magnificently staged musical theater, provide a range of opportunities for people to get closer to the joy and magic of opera-making, and train the next generation of opera stars. Your personal passion and commitment make it possible.

## **FRIENDS OF LYRIC**

### **You make the magic**

By contributing \$50 or more, you'll become a Friend of Lyric—a group of like-minded souls who help bring dazzling and thought-provoking productions to life on the stage and in the community. Your gift will also unlock special opportunities for you to engage more deeply with our beloved art form.

## **PATRONS**

### **You're our partners—and family**

With an investment of \$5,000 or more, you're a valued partner, helping to realize Lyric's vision to advance opera in the 21st century. You'll be supporting artistic excellence, engaging our diverse communities through signature learning and exploration initiatives, and expanding Lyric's role as a cultural cornerstone in Chicago. You will also enjoy exclusive dining options, preferred seating at Lyric performances, and opportunities to attend star-studded events. Welcome to the family!

Support your Lyric. Include a tax-deductible gift with your subscription renewal. We promise to steward every dollar wisely.

**Visit [lyricopera.org/donate](http://lyricopera.org/donate) to learn more opportunities to engage at Lyric!**

Lyric gratefully accepts gifts of stock, IRA distributions, monthly contributions, and contributions from donor-advised funds. Contact our Development department at **312.827.3500** to learn more.

**The Fund for Lyric**



# 2021 Season

Sun	Mon	Tue	Wed	Thu	Fri	Sat
JANUARY 2021						
10	11	12	13	14	15   7pm Blue	16
17   1:30pm Blue	18	19	20   7pm Blue	21	22   7pm Blue	23   7pm Blue Samson D, D2   7:30pm
24   1:30pm Blue	25	26	27	28	29   7pm Samson C-C3	30   7:30pm Elixir F-F1
FEBRUARY 2021						
	1   7pm Samson A-A1-A3-V	2	3   7pm Elixir B-A2-B3	4   2pm Samson MG	5	6   7:30pm Elixir D-D1
7   2pm Samson MA	8	9   7pm Elixir A-A1-V	10   7pm Samson B-b1	11	12   7pm Elixir C	13   7:30pm Samson F-F1
14   2pm Elixir MA	15	16	17	18	19	20

Sun	Mon	Tue	Wed	Thu	Fri	Sat
MARCH 2021						
7   3pm Goerke Recital	8	9	10	11	12	13
14   2pm Figaro MC	15	16	17   2pm Figaro MB	18	19	20   7:30pm Figaro D-D2
21   2pm Rake MA	22	23   7pm Figaro A-A2	24   7pm Rake B-A1-V	25	26   7pm Figaro C-C3-D1	27   2pm Rake MC
28	29	30   7pm Figaro V	31   2pm Rake MB			
APRIL 2021						
				1   2pm Figaro MG	2	3   7:30pm Rake D-D1
4	5	6   7pm Rake A-A2-A3	7   7pm Figaro B-B1-B3	8	9   7pm Figaro F-F1	10   7pm Davis Concert MB
11   2pm Figaro MA	12	13	14	15	16	17
MAY 2021						
2	3	4	5	5	7	8   5:30pm Wine Auction
16	17	18	19	20	21	22   10am Family Day
JUNE 2021						
		1	2	3	4   7pm Singin' Preview	5   7:30pm Singin' Celebration
6   1:30pm Singin'	7	8	9   1:30pm   7pm Singin'	10   7pm Singin'	11   7pm Singin'	12   1:30pm   7pm Singin'
13   1:30pm Singin'	14	15   7pm Singin'	16   1:30pm Singin'	17   1:30pm   7pm Singin'	18   7pm Singin'	19   1:30pm   7pm Singin'
20   1:30pm Singin' father's day	21	22   7pm Singin'	23   1:30pm   7pm Singin'	24   7pm Singin'	25   7pm Singin'	26   1:30pm   7pm Singin'
27   1:30pm Singin'	27					

Visit [lyricopera.org/subscribe](https://lyricopera.org/subscribe) or call 312.827.5600 where our audience services staff is waiting to assist you—join us!

Lyric is pleased to welcome The Joffrey Ballet to their new home at the Lyric Opera House in 2021.

**PRICE COLOR KEY**  
Color key not applicable to Fixed Series subscriptions.

**Create your own series price dates**

A B C

**Other / special events**





Lyric performances touch our lives,  
tell unforgettable stories, and provide  
truly unique experiences.

**BE PART OF THE EXCITEMENT OF LIVE  
ART UNFOLDING. SUBSCRIBE TODAY.**

*Lyric*

