

Lyric

Welcome
Music Director
Enrique Mazzola

2021 | 22 SEASON

Macbeth

The Elixir of Love

The Magic Flute

Florencia en el Amazonas

Proving Up

Tosca

Fire Shut Up in My Bones

Sir Andrew Davis Conducts Beethoven 9

ANTHONY FREUD

General Director, President & CEO

ENRIQUE MAZZOLA

Music Director

 **Invesco QQQ**

2021 | 22 Season Sponsor

Dear Lyric Family

New beginnings are cause for celebration, and we invite you to join us as we look forward to the joyful return of live performances in the 2021/22 Season. Under any circumstances, the prospect of all of us being reunited to experience great music together would be exhilarating — and we're especially excited about all there is to anticipate in the upcoming season:

- We welcome the dynamic **Maestro Enrique Mazzola as Lyric's new Music Director**. Enrique is a consummate artist and a collaborative partner whose boundless energy and deep love for creative innovation have been behind many of our virtual programs during the reimagined 2020/21 Season. I look forward to the many ways that he will shape our company, our ensembles, and our community.
- **Our beautiful Lyric Opera House is now more accessible than ever**. Thanks to a generous anonymous donor, we were able to replace every seat in the house, reshaping the theater with widened aisles and better ease of access throughout.
- **We welcome The Joffrey Ballet as a resident company at the Lyric Opera House**, a genuine partnership that will bring new audiences to our beautiful, iconic home.
- We are bringing you **seven opera productions that have never before been seen in Chicago** — from our completely new *Macbeth* to open the season, to our new coproduction of the riveting contemporary work *Fire Shut Up in My Bones* to close the season. We'll also produce Lyric's very first mainstage opera sung in Spanish, *Florencia en el Amazonas*, and Missy Mazzoli's hauntingly beautiful chamber opera *Proving Up*, plus new-to-Chicago productions of *The Elixir of Love*, *The Magic Flute*, and *Tosca*.
- **We stand firmly committed to the important principles of Inclusion, Diversity, Equity, and Access (IDEA)**, and have done important work during the past year to impact every area of our company. We hope that you'll feel that work as you join us during the upcoming season.

As we boldly move forward from this truly difficult year, we find ourselves in a watershed moment for our company. I cannot overstate how important your support has been, and how important it continues to be as we work to adapt and recover. We can't wait to safely welcome you back to the Lyric Opera House for the shared community and the life-affirming power of live performance — I hope you will join us!



Sincerely,

Anthony Freud OBE

General Director, President & CEO
The Women's Board Endowed Chair

As live opera returns, your safety is our priority.

Lyric is fully committed to the health and safety of our entire family — our audiences, artists, technicians, administrative staff, and all of the communities we serve throughout each season.

Though there are still many unknowns around the upcoming season, we are committed to communicating to you with transparency about our plans for the fall. Here's what we are currently planning:

- **The four operas from September through November will be reworked to have a maximum performance time of 2.5 hours without a full intermission.**
- Our hope is to provide patrons with your intended subscription seating as soon as possible. Until we receive guidance from health authorities on allowable theater capacity, however, **we will be sending your tickets on a show-by-show basis** to allow for flexibility in responding to evolving capacity allowances.
- Lyric will offer **virtual streams of the season's shows for ticket holders only, as an alternative to attending in person**, should you not yet feel comfortable returning to the theater.

At the theater, you can expect:

- In compliance with state and local health guidelines, **attendees will be required to wear mandatory face coverings.**
- **Enhanced, hospital-grade cleaning practices** using high-performance disinfectants throughout our theater spaces and offices.
- **Ventilation systems have been thoroughly cleaned**, including fogging of hard-to-reach surfaces.
- **Upgraded air filters** have been installed, and **airflow has been shifted to decrease recycled air and increase fresh air exchange.**
- Water systems have been regularly maintained.
- Increased conversion to **touchless fixtures** in the theater.
- **Hand-sanitizing stations** are available in locations throughout the theater.
- Dining and concessions will be operated in compliance with state and local health guidelines.
- **Daily health and safety checks** are conducted for our onsite staff members.

In the coming months, we will continue to work closely with all state and local public health officials, as well as an ongoing consultation with an infectious disease expert, to ensure that all of our protocols promote personal health and safety. We look forward to having you back in the Lyric Opera House for live performances!

For more on Lyric's safety standards, visit lyricopera.org/safety

September

17, 23m, 30

October

3m, 6m, 9

MACBETH

VERDI



Production sketches by John Macfarlane

NEW PRODUCTION

Sung in Italian with projected English texts

Lyric's riveting season opener is the inaugural production of our new Music Director Enrique Mazzola's tenure, and a brand-new production from Sir David McVicar. Adapting one of the greatest tragedies written by his hero, Shakespeare, Verdi created a stunning portrait of the most power-hungry couple who ever trod a stage. Macbeth's bloody ascent to the throne of Scotland — led and supported by his wife's own consuming ambition — results in disaster for them both. Verdi brings them to blazing life in a score that bristles with energy and endless excitement. Grand-scale arias, hair-raising duets, stupendous ensembles — they're all here, in the first genuine masterpiece of Verdi's career.



MACBETH
Luca Salsi*



**LADY
MACBETH**
Sonda
Radvanovsky



MACDUFF
Joshua
Guerrero*



BANCO
Christian
Van Horn+

Conductor
Director
Set Designer
Costume Designer
Lighting Designer
Chorus Master
Choreographer

Enrique Mazzola
Sir David McVicar
John Macfarlane
Moritz Junge
David Finn
Michael Black
Andrew George

A co-production of Lyric Opera of Chicago and Canadian Opera Company.

* Lyric debut | + Ryan Opera Center alumnus

September

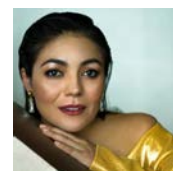
26m, 29m

October

2, 5, 8

The Elixir of Love

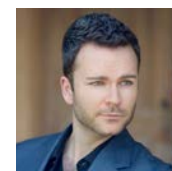
DONIZETTI



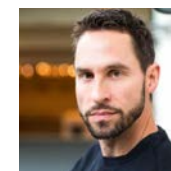
ADINA
Ailyn Pérez



NEMORINO
Charles
Castronovo



BELCORE
Joshua
Hopkins



DULCAMARA
Kyle
Ketelsen

Conductor
Director
Designer
Lighting Designer
Chorus Master
Choreographer

Enrique Mazzola
Daniel Slater*
Robert Innes Hopkins
Simon Mills*
Michael Black
Tim Claydon

*A co-production of Lyric Opera of Chicago
and San Francisco Opera, originally created
by Opera North, UK.*

* Lyric debut



Pittsburgh Opera /
c. 2018 David Bachman Photography

November

3, 7m, 11m,
14m, 17m,
19, 27



THE

MAGIC

MOZART

FLUTE

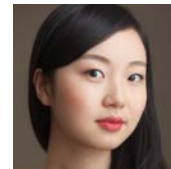


Cory Weaver/Los Angeles Opera

NEW-TO-CHICAGO PRODUCTION

Sung in German with projected English texts

Mozart's miraculous blend of the human and the supernatural, comedy and romance, draws us into a world where a prince, Tamino, and a princess, Pamina, triumph over every obstacle in their search for wisdom and enlightenment, and are finally united in love. This is a gloriously varied score, with the lovers' soulful arias, the stratospheric vocal fireworks of the villainous Queen of the Night, the subterranean depths of the formidable high priest Sarastro, and the folk-like melodies of the lovable birdcatcher, Papageno. Lyric brings you a critically acclaimed production that pays homage to the silent movies of the 1920s, praised by *The Guardian* as "a joyous yet profound staging in which animation takes centre stage...[taking] live video to new heights on the opera stage."



PAMINA
Ying Fang



QUEEN OF THE NIGHT
Lila Dufy*



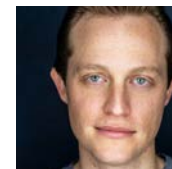
TAMINO
Pavel Petrov*



PAPAGENO
Huw Montague Rendall*



SARASTRO
Tareq Nazmi*



MONOSTATOS
Brenton Ryan

Conductor
Original Directors

TBD
Suzanne Andrade*
and Barrie Kosky*

Designer
Animation Designer
Concept by

Esther Bialas*
Paul Barritt*
"1927" (Suzanne Andrade and Paul Barritt) and Barrie Kosky
Michael Black

Chorus Master

*A production of the Komische Oper Berlin,
co-produced by Los Angeles Opera and Minnesota Opera.*

PRODUCTION SPONSORS

The Negaunee Foundation **Mr. & Mrs. Sanfred Koltun** **Liz Stiffel** **Gramma Fisher Foundation of Marshalltown, Iowa**

* Lyric debut

November

13, 18, 21m,
26, 28m

CATÁN

Florencia EN EL AMAZONAS



Lynn Lane/Houston Grand Opera

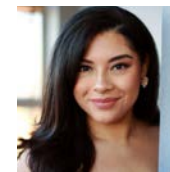
LYRIC PREMIERE

Sung in Spanish with projected English texts

Lyric's first Spanish-language work to be presented as part of the mainstage opera season, an entrancing allure of magical realism illuminates this story of a glamorous diva on a life-changing adventure on the Amazon. Florencia Grimaldi, a renowned diva, is engaged to perform at the opera house of Manaus, Brazil. Traveling there by boat, she's consumed by longing for her long-lost lover, who she hopes will be awaiting her. Florencia and her fellow passengers are all intensely memorable characters, and they're illuminated by the magnificent, lushly romantic music created by a true musical genius — Mexico's finest opera composer, Daniel Catán.



FLORENCIA
Ana María
Martínez



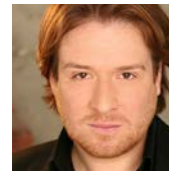
ROSALBA
Gabriella
Reyes*



ARCADIO
Mario Rojas+



PAULA
Deborah
Nansteel



ALVARO
Levi
Hernández+



RIOLOBO
Ethan
Vincent*



CAPTAIN
Raymond
Aceto

Conductor
Director
Set Designer
Costume Designer
Lighting Designer
Projection Designer
Chorus Master
Choreographer

Jordan de Souza*
Francesca Zambello
Peter J. Davison
Catherine Zuber
Mark McCullough
S. Katy Tucker*
Michael Black
Eric Sean Fogel

*Original production from Houston Grand Opera.
An opera in two acts with music by Daniel Catán
and libretto by Marcela Fuentes-Berain.*

PRODUCTION SPONSOR

**Marion A.
Cameron**

* Lyric debut | + Ryan Opera Center alumnus

January
22, 26, 28,
30m

PROVING UP

MUSIC BY MISSY MAZZOLI
LIBRETTO BY ROYCE VAVREK



Opera Omaha / Proving Up 2018

LYRIC PREMIERE

Sung in English with projected English texts

The American dream: the promise of a better life for those who work to achieve it. In this gripping drama, acclaimed composer Missy Mazzoli and librettist Royce Vavrek explore whether regular, hardworking people are able to fulfill their destiny — and what happens when fate is cruel, and their dreams turn into nightmares. The haunting, supernatural story of Nebraska homesteaders in the 1870s and their dream of “proving up” and obtaining the deed to the land they’ve settled, the opera draws us vividly into a world where the requirement of a single glass window can shatter the hopes and dreams of a family. *The Washington Post* called *Proving Up* “harrowing...powerful... a true opera of our time.” Join us for the anticipated Chicago premiere of this new chamber opera.

CAST TBA

Conductor	Enrique Mazzola
Director	James Darrah*
Set Designer	Adam Rigg*
Costume Designer	Chrisi Karvонides-Dushenko*
Lighting Designer	Pablo Santiago*

*Adapted from the short story “Proving Up”
by Karen Russell.*

*Co-commissioned by Washington National Opera,
Opera Omaha, and Miller Theater at Columbia
University. ©2018 G. Schirmer, Inc.*

Original Production by Opera Omaha.

**Performed in the Owen Theatre
at Goodman Theatre - ON SALE SUMMER 2021
170 N. Dearborn Street, Chicago**

GOODMAN^{THEATRE}

* Lyric debut

March

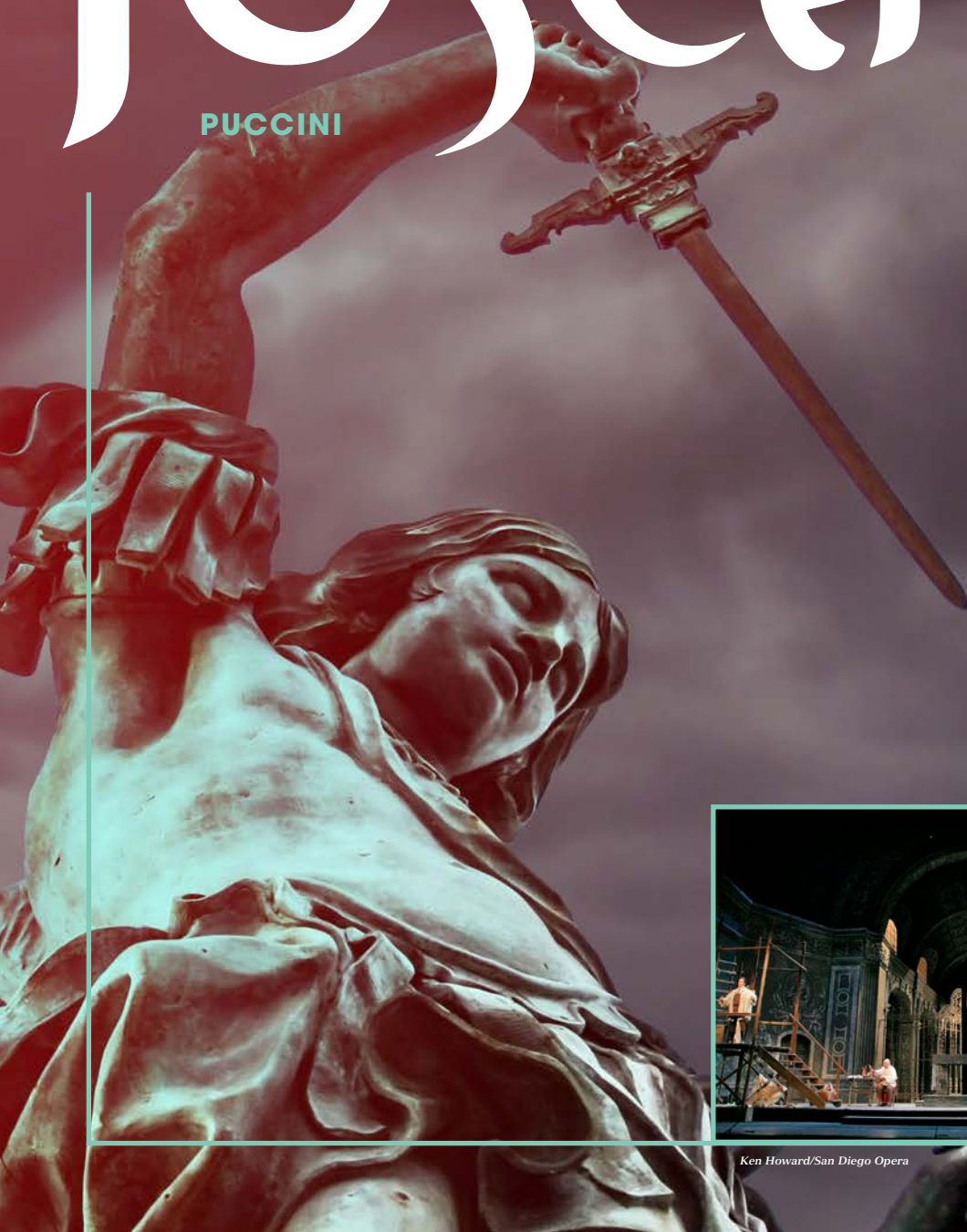
12, 15, 18,
23m, 26

April

3m, 7m, 10m

Tosca

PUCCINI

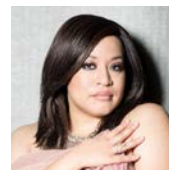


Ken Howard/San Diego Opera

NEW-TO-CHICAGO PRODUCTION

Sung in Italian with projected English texts

A diva who has all of Rome at her feet. A woman who takes charge of her life and fights for what she wants. A heroine who is brave and loving, extravagantly emotional, yet utterly irresistible. Floria Tosca is all these things. She's loved by Mario Cavaradossi, the revolutionary, and lusted after by Baron Scarpia, Rome's vicious police chief. Puccini's lushly grand-scale music illuminates these characters, and the entire opera bursts with a theatricality that makes *Tosca* a favorite of audiences everywhere.



TOSCA
Michelle
Bradley*



CAVARADOSSI
Russell
Thomas



SCARPIA
Fabian Veloz*



SPOLETTA
Rodell Rosel+

Conductor
Director
Set Designer
Costume Designer
Lighting Designer
Chorus Master

Eun Sun Kim*
Louisa Muller
Jean-Pierre Ponnelle
Marcel Escoffier
Duane Schuler
Michael Black

PRODUCTION SPONSOR

**Mazza
Foundation**

* Lyric debut | + Ryan Opera Center alumnus

March
24, 27^m
April
2, 6^m, 8

AN OPERA BY TERENCE BLANCHARD
BASED ON THE BOOK BY CHARLES M. BLOW
LIBRETTO BY KASI LEMMONS

FIRE SHUT UP IN MY BONES



Will Liverman photo by Kyle Flubacker
Production Image by Eric Woolsey/
Opera Theatre of Saint Louis

NEW CO-PRODUCTION

Sung in English with projected English texts

New York Times columnist Charles M. Blow's widely acclaimed memoir is the source for this extremely moving story of his traumatic youth in Louisiana. What an amazing collection of talent — composer Terence Blanchard, one of the most influential figures in American jazz; librettist Kasi Lemmons, director of such remarkable films as *Harriet* and *Eve's Bayou*; and a topflight cast including many of America's most brilliant singing actors. *Fire Shut Up in My Bones* is an opera for today, revealing the Black experience in this country as few other operas have done.



CHARLES
Will Liverman⁺



BILLIE
Latonia
Moore*



**DESTINY/
LONELINESS/
GRETA**
Jacqueline
Echols*



SPINNER
Chauncey
Packer*



CHESTER
Christopher
Kenney⁺

Conductor
Co-Director

Choreographer
Set Designer
Costume Designer
Lighting Designer
Projection Designer
Chorus Master

Daniela Candillari
James Robinson* and
Camille A. Brown*
Camille A. Brown*
Allen Moyer
Paul Tazewell
Christopher Akerlund
Greg Emetaz
Michael Black

*A co-production of Lyric Opera of Chicago,
the Metropolitan Opera, and LA Opera.
Commissioned by the Metropolitan Opera.
Originally commissioned by Opera Theatre of Saint
Louis, co-commissioned by Jazz Saint Louis.*

PRODUCTION SPONSOR

Gael Neeson

* Lyric debut | + Ryan Opera Center alumnus

Friday,
April 1, 2022,
7pm

Sir Andrew Davis Conducts Beethoven 9

Beethoven Symphony No. 9
Featuring the Lyric Opera Orchestra
and Chorus

Honoring Sir Andrew Davis

Lyric will celebrate Sir Andrew Davis's magnificent two-decade tenure as music director with one of his favorite works, never previously performed at Lyric: Beethoven's enthralling, life-enhancing Symphony No. 9, the "Choral," music's most exalted hymn to the human spirit. Sir Andrew will conduct a superb vocal quartet with the wonderful Lyric Opera Orchestra and Chorus. The concert will begin with a new choral work by Sir Andrew's son, Ed Frazier Davis, himself an impressively gifted composer.

Todd Rosenberg

An important message about your subscription

We can hardly wait to welcome you back to the Lyric Opera House this fall to enjoy the majestic splendor of live opera. While we are optimistic about returning, we must also be absolutely realistic about our current financial situation.

Producing opera is very expensive. Even during a typical season, revenue from ticket sales alone wouldn't cover half of Lyric's operating costs. If we had to rely solely upon ticket revenue, your subscription would likely cost two or three times more than what you're paying. Instead, we've relied upon charitable contributions from our donor family to subsidize ticket prices and balance our budget, keeping Lyric in good financial standing.

Simply put, we need your philanthropic support to help bring us back to the stage this season. Please include a tax-deductible gift for Lyric with your order so we can meet this challenge head-on. Knowing that we have your full support, we can rebuild our opera together.

Save the date: Saturday, September 25

Join Lyric's Womens' Board for a unique gala celebration of Lyric's 2021/22 Season, the inaugural season of Music Director Enrique Mazzola, and the return to live performances! For the first time ever, Lyric plans to host this exciting evening outdoors as we invite attendees to reconnect with fellow opera lovers and enjoy some great music along the way. Details will be forthcoming in Summer 2021 — be sure to save the date for this special occasion as part of the much-anticipated launch of the fall cultural season!



New seats!

Accessibility and comfort are yours at the Lyric Opera House.

While live performances were on hiatus during the past year, work at the opera house continued under the strictest health and safety protocols. We are happy to share that when the 2021/22 Season opens this fall, we'll be ready to welcome you to a more accessible opera house. Thanks to a generous gift from an anonymous donor in support of Lyric's Patron Accessibility Initiative, brand-new seats are now in place for every part of the house.

With this exciting renovation project now complete, the 2021/22 Season opens with:

- Plush, state-of-the-art seats throughout the theater with a pleasing ergonomic design
- New Main Floor seating configuration that provides staggered design for better sight-lines that will parallel the graduated views offered on upper floors
- Wider aisles for improved entrance and exit flow
- Increased accessibility with more wheelchair-accessible seating
- A new section, Main Floor Select, of the very best seats in the front of the Main Floor Prime section. Main Floor Select ticket holders receive free "anytime exchanges" — right up until the day of the show, season-long free coatcheck, and the most up-close-and-personal view in the house!

We look forward to welcoming you to our newly improved theater in September, where we hope to enjoy many more extraordinary performances together.



Join us today!
lyricopera.org/subscribe
312.827.5600

Benefits & beyond

Join the Lyric family and get special benefits along with the best prices of the season, including priority access, event invitations, and more.

FIRST IN LINE

All subscribers get priority renewal, the best seats before tickets go on sale to the general public, and early access to special events.

SPECIAL PRICES

Subscribers save 10% on any additional opera and musical tickets and receive periodic special offers throughout the season.

NO EXCHANGE FEES

Exchanges are free for subscribers up to five days before a performance. Fees apply to upgrades in seating section or date. Value Series subscribers may only exchange within the first three dates (excluding Sundays) of any 2021/22 opera production, otherwise upgrade fees will apply.

TRADEONE™

Subscribers to fixed 3-, 4-, or 5-opera series may trade one opera in their lineup for one that is not. Fees apply.

EASY PAYMENT PLANS

Just 25% down secures your series with no additional processing or handling fees. Call us for a custom payment plan that works for you!

DISCOUNTED PARKING

Lyric subscribers enjoy a special low rate of \$12 when purchased in advance at Poetry Garage. Offer valid weeknights from 3pm-3am and up to 12 hours on weekends. Not valid for weekday matinees. Visit thepoetrygarage.com.

Please note: The status of pre-opera talks will be decided based on health and safety policies for the fall, and will be updated in Summer 2021. Pre-opera talks will continue to be free for all subscribers when they resume.

Casting and programs subject to change but specified in good faith at time of printing.

Fixed series

6-OPERA SERIES

D	G <i>Formerly A & B Series</i>	H <i>Formerly C & F Series</i>	MA	VALUE (V)
The Elixir of Love Sat 10/2/21	Macbeth Thur 9/30/21	Macbeth Fri 9/17/21	The Elixir of Love Sun 9/26/21	Macbeth Fri 9/17/21
Macbeth Sat 10/9/21	The Elixir of Love Tue 10/5/21	The Elixir of Love Fri 10/8/21	Macbeth Sun 10/3/21	The Elixir of Love Tue 10/5/21
Florecia en el Amazonas Sat 11/13/21	The Magic Flute Wed 11/3/21	The Magic Flute Fri 11/19/21	The Magic Flute Sun 11/7/21	The Magic Flute Sat 11/3/21
The Magic Flute Sat 11/27/21	Florecia en el Amazonas Thu 11/18/21	Florecia en el Amazonas Fri 11/26/21	Florecia en el Amazonas Sun 11/21/21	Florecia en el Amazonas Wed 11/13/21
Tosca Sat 3/12/22	Tosca Tue 3/15/22	Tosca Fri 3/18/22	Fire Shut Up in My Bones Sun 3/27/22	Tosca Sat 3/26/22
Fire Shut Up in My Bones Sat 4/2/22	Fire Shut Up in My Bones Thu 3/24/22	Fire Shut Up in My Bones Fri 4/8/22	Tosca Sun 4/10/22	Fire Shut Up in My Bones Sat 4/2/22

3- AND 5-OPERA MATINEE SERIES

MB	MC	MG
The Elixir of Love Wed 9/29/21	The Magic Flute Sun 11/14/21	Macbeth Thu 9/23/21
Macbeth Wed 10/6/21	Florecia en el Amazonas Sun 11/28/21	The Magic Flute Thu 11/11/21
The Magic Flute Wed 11/17/21	Tosca Sun 4/3/22	Tosca Thu 4/7/22
Tosca Wed 3/23/22		
Fire Shut Up in My Bones Wed 4/6/22		

5-OPERA SERIES

H1 <i>Formerly C & F1 Series</i>
Macbeth Fri 9/17/21
The Elixir of Love Fri 10/8/21
Florecia en el Amazonas Fri 11/26/21
Tosca Fri 3/18/22
Fire Shut Up in My Bones Fri 4/8/22

Monday - Friday opera performances are at 7pm. Saturday evening performances are at 7:30pm and matinees begin at 2pm. Special events start times vary.

Casts and programs are subject to change without notice but are specified in good faith at time of printing.

4-OPERA SERIES

D1	D2	G1 <i>Formerly A1, 2 & B1 Series</i>	G3 <i>Formerly A3 & B3 Series</i>	H3 <i>Formerly C3 Series</i>
Macbeth Sat 10/9/21	The Elixir of Love Sat 10/2/21	Macbeth Thu 9/30/21	The Elixir of Love Tue 10/5/21	Macbeth Fri 9/17/21
Florecia en el Amazonas Thu 11/18/21	Florecia en el Amazonas Sat 11/13/21	The Magic Flute Wed 11/3/21	Florecia en el Amazonas Fri 11/26/21	The Elixir of Love Fri 10/8/21
The Magic Flute Sat 11/27/21	Tosca Tue 3/15/22	Tosca Tue 3/15/22	Tosca Tue 3/15/22	The Magic Flute Fri 11/19/21
Tosca Sat 3/12/22	Fire Shut Up in My Bones Sat 4/2/22	Fire Shut Up in My Bones Thu 3/24/22	Fire Shut Up in My Bones Thu 3/24/22	Tosca Fri 3/18/22



Cory Weaver/LA Opera

THESE FIXED-DATE SERIES OFFER:

- Our very best discounts
- Fee-free exchanges completed up to five days before your performance date
- The option to trade one opera in your series for an opera that is not. Fees apply.
- Priority seating — our fixed-date subscribers have access to the best seats in the house, and priority renewal

Pricing

As you return to live performances, Lyric's pricing has remained flat to help make your decision to subscribe easier. With packages from just \$84 for three operas, there's a package and price point for every budget!

FLOOR		MAIN FLOOR							2ND	3RD	4TH	5TH	6TH
		Select	Prime	MF 1	MF 2	MF 3	MF 4	MF 5	Box	First Balcony	Upper Balcony		
Series	# of Operas	Center	Center	Balance	All Seats	Center	Center	Balance		Dress Circle			

FIXED-DATE SERIES

D Now 6 Operas	6	1596	1494	1080	1080				1596	1122				408	198
G*	6	1326	1242	714	714				1326	852				294	132
H*	6	1326	1242	714	714				1326	852				294	132
MA Now 6 Operas	6	1596	1494	1080	1080	714	528	372	1596	1122	810	606	378	408	198
Value Series Savings of 50% off	6		810	600	600	390	300	240	900	660	480	360	210	240	120
H1	5					395	290	250			490	355	195		
D1 Now 4 Operas	4					476	352	248			540	404	252		
D2 Now 4 Operas	4					476	352	248			540	404	252		
G1	4					316	232	200			392	284	156		
G3	4	900	844	492	492				900	584				224	100
H3	4	900	844	492	492	352	256	212	900	584	464	352	192	224	100
MB	5	980	915	655	655	535	400	285	980	800	620	450	255	290	140
MC Now 3 Operas	3	735	675	486	486	351	249	183	735	525	399	300	174	198	99
MG Now 3 Operas	3	588	549	393	393	321	240	171	588	480	372	270	153	174	84

CREATE YOUR OWN (CYO - PRICES SHOWN ARE PER SEAT)

You choose the shows, the dates, and the seats and save up to 25% off individual show prices! Minimum 3

C* Operas Best value!	230	215	133	133	108	78	58	230	162	126	91	52	59	29
B* Operas	246	227	175	175	120	83	66	246	181	139	100	60	71	40
A* Operas Highest demand	268	251	182	182	135	97	76	268	192	152	112	76	82	49

* See calendar for color A, B, C color coding by date

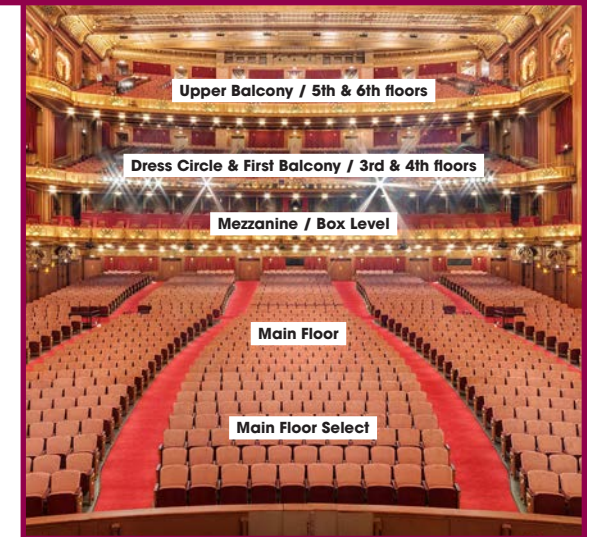
ADD BEETHOVEN 9 TO YOUR PACKAGE AT THESE 10% OFF PRICES*

* Proving Up pricing and on-sale date coming Summer 2021.

Sir Andrew Davis Conducts Beethoven 9	158	135	107	107	89	80	71	135	116	98	89	62	62	35
--	-----	-----	-----	-----	----	----	----	-----	-----	----	----	----	----	----

Subscribers have access to a year-long exclusive discount on additional tickets.

Full 6-opera package subscribers: Save 25% off your additional tickets through your renewal deadline, then 10% for the rest of the year. All other subscribers, save 10% on add-on tickets all year long!



Questions?

Visit lyricopera.org/subscribe or call **312.827.5600** for assistance.

In response to public health concerns, Lyric will be assigning subscription seats on a show-by-show basis and will continuously evaluate capacity for the safety of our patrons.

Prices shown include discounts. Prices are subject to change. Subscriptions are not available in the blank areas.

Value Series subscribers may only exchange within the first three dates (excluding Sundays) of any 2021/22 opera production, otherwise upgrade fees will apply.

CYO seats will vary by event.

Aisle and adjacent seats incur an additional \$10.00 per ticket fee in Main Floor Select, Main Floor Prime, and First Balcony 1 seating, and a \$5.00 per ticket fee in all other sections of the house. Prices shown are for non-aisle and adjacent seats. Individual events within your subscription may have unique pricing.

Lyric reserves the right to sell up to eight seats per box for select performances.

Your philanthropic support, as well as your tenure as a subscriber, are taken into account when seats are assigned.

All subscription tickets will be sent via email during the 2021/22 season. Box Office Pickup will not be available at this time.

* New series

2021 | 22 Season

Visit lyricopera.org/subscribe or call **312.827.5600**
where our Audience Services staff is waiting to assist you — join us!

Sun	Mon	Tue	Wed	Thu	Fri	Sat
SEPTEMBER 2021						
12	13	14	15	16	17 7pm Macbeth H, V, H1, C3	18
19	20	21	22	23 2pm Macbeth MG	24	25
26 2pm Elixir MA	27	28	29 2pm Elixir MB	30 7pm Macbeth G, G1		
OCTOBER 2021						
					1	2 7:30pm Elixir D-D2
3 2pm Macbeth MA	4	5 7pm Elixir G, G3, V	6 2pm Macbeth MB	7	8 7pm Elixir H, H1, H3	9 7:30pm Macbeth D-D1
NOVEMBER 2021						
	1	2	3 7pm Flute G, V, G1	4	5	6
7 2pm Flute MA	8	9	10	11 2pm Flute MG	12	13 7:30pm Florenca D, V, D2
14 2pm Flute MC	15	16	17 2pm Flute MB	18 7pm Florenca G, D1	19 7pm Flute H, H3	20
21 2pm Florenca MA	22	23	24	25 Thanksgiving	26 7pm Florenca H, G3, H1	27 7:30pm Flute D, D1
28 2pm Florenca MC	29	30				
JANUARY 2022						
16	17	18	19	20	21	22 7:30pm Proving Up
23	24	25	26 7pm Proving Up	27	28 7pm Proving Up	29
30 2pm Proving Up						

Sun	Mon	Tue	Wed	Thu	Fri	Sat
MARCH 2022						
6	7	8	9	10	11	12 7:30pm Tosca D, D1
13	14	15 7pm Tosca G, G3, G1	16	17	18 7pm Tosca H, H3, H1	19
20	21	22	23 2pm Tosca MB	24 7pm Fire G, G1, G3	25	26 7:30pm Tosca V, D2
27 2pm Fire MA	28	29	30	31		
APRIL 2022						
					1 7pm Sir Andrew Davis	2 7:30pm Fire D, D2, V
3 2pm Tosca MC	4	5	6 2pm Fire MB	7 2pm Tosca MG	8 7pm Fire H, H1	9
10 2pm Tosca MA						

SEPTEMBER 2021						
17 Fri	Macbeth	H,V,H1,H3	7pm			
23 Thu	Macbeth	MG	2pm			
26 Sun	Elixir	MA	2pm			
29 Wed	Elixir	MB	2pm			
30 Thu	Macbeth	G,G1	7pm			

OCTOBER 2021						
2 Sat	Elixir	D,D2	7:30pm			
3 Sun	Macbeth	MA	2pm			
5 Tue	Elixir	G,G3,V	7pm			
6 Wed	Macbeth	MB	2pm			
8 Fri	Elixir	H,H1,H3	7pm			
9 Sat	Macbeth	D,D1	7:30pm			

NOVEMBER 2021						
3 Wed	Flute	G,V,G1	7pm			
7 Sun	Flute	MA	2pm			
11 Thu	Flute	MG	2pm			
13 Sat	Florenca	D,V,D2	7:30pm			
14 Sun	Flute	MC	2pm			
17 Wed	Flute	MB	2pm			
18 Thu	Florenca	G,D1	7pm			
19 Fri	Flute	H,H3	7pm			
21 Sun	Florenca	MA	2pm			
26 Fri	Florenca	H,G3,H1	7pm			
27 Sat	Flute	D,D1	7:30pm			
28 Sun	Florenca	MC	2pm			

JANUARY 2022						
22 Sat	Proving Up		7pm			
26 Wed	Proving Up		7pm			
28 Fri	Proving Up		7pm			
30 Sun	Proving Up		2pm			

MARCH 2022						
12 Sat	Tosca	D,D1	7:30pm			
15 Tue	Tosca	G,G3,G1	7pm			
18 Fri	Tosca	H,H3,H1	7pm			
23 Wed	Tosca	MB	2pm			
24 Thu	Fire	G,G1,G3	7pm			
26 Sat	Tosca	V,D2	7:30pm			
27 Sun	Fire	MA	2pm			

APRIL 2022						
1 Fri	Sir Andrew Davis		7pm			
2 Sat	Fire	D,D2,V	7:30pm			
3 Sun	Tosca	MC	2pm			
6 Wed	Fire	MB	2pm			
7 Thu	Tosca	MG	2pm			
8 Fri	Fire	H,H1	7pm			
10 Sun	Tosca	MA	2pm			



David Bachman/Pittsburgh Opera

PRICE COLOR KEY

Color key only applicable to CVO and Add On individual tickets.

Create your own series price dates **A** **B** **C**

Other / special events **■**

Join us, and be moved and inspired
by powerful stories, thrilling theater,
and the music you've been craving.

**SUBSCRIBE TODAY TO THE MUCH-ANTICIPATED
2021 | 22 SEASON.**

📞 312.827.5600

🏠 lyricopera.org



Lyric Opera of Chicago thanks its Official Airline, **American Airlines**.
Lyric Opera of Chicago is supported in part by a grant from the
National Endowment for the Arts in response to the COVID-19 pandemic
and acknowledges support from the **Illinois Arts Council Agency**.

Lyric

Back cover: Eric Woolfsey/Opera Theatre of Saint Louis
Front cover: Jean-Baptiste Milot

**LYRIC OPERA
OF CHICAGO**
20 N Wacker Drive
Chicago, IL 60606

Non-profit org
U.S. Postage
PAID
Chicago, IL
Permit No. 6047