

Lyric

OPERA OF
CHICAGO

Mozart

Così fan tutte





DAVID ZIVAN

Lead Writer and Editor

CATHY KIEPURA

ROBERT JOHNSON

Program Book Designers

JESSICA M. PEDROZA, PMP

Marketing Project Manager

Administrative Offices
20 North Wacker Drive, Suite 860
Chicago, Illinois 60606
lyricopera.org

SAMETZ BLACKSTONE ASSOCIATES

Visual Direction

PMGMA, Inc.

PMGMA, Inc.
340 Anthony Trail
Northbrook, IL 60062
pmgma.com

Gail McGrath
Publisher & President

Sheldon Levin
Finance

Rand Brichta
Sales Manager

Jill Wettersten
Account Manager

For advertising information call 847-770-4621.

To see our Advertising Terms and Conditions,
visit our website at pmgma.com.

All contents copyrighted. All rights reserved.
Nothing may be reproduced in any manner
without written permission. © 2026

PMGMA, Inc. is a Woman Owned Business.

**You can view this program on your mobile device
at www.pmgma.com.**

**For the latest information on this
performance, please scan this QR code.**



In this issue



Così fan tutte at San Francisco Opera, 2021 | pp. 12-29

4 WELCOME TO YOUR LYRIC

- 6 A warm welcome from the Board Chair and General Director
- 7 Board of Directors
- 8 Coming Attractions: With innovative programming that supplements the core repertoire, Lyric continues to redefine what an opera company can be.

12 TODAY'S PERFORMANCE

- 15 Title page and cast
- 16 Synopsis
- 18 Opera Notes: The libretto of *Così* presents an enduring enigma — and Mozart's sublime music transcends all the troubles.
- 22 Artist profiles
- 26 Orchestra and Chorus

28 THANK YOU FOR YOUR SUPPORT

- 30 Bravissimi
- 32 Production sponsors
- 35 Supporting our future — endowments at Lyric
- 36 Ardis Krainik Society
- 40 Corporate partnerships
- 42 Aria Society
- 46 Annual individual and foundation support
- 52 Commemorative gifts
- 53 Artistic Roster
- 54 Lyric Staff

56 RYAN OPERA CENTER

- 58 Distinguished alumni perform all over the globe.

60 LYRIC UNLIMITED

- 62 *Opera in the Neighborhoods* delivers professional, youth-friendly opera all over the city.
- 64 People of Lyric: The Senior Director of Gift Planning is an innovator, an attorney, and, perhaps above all, a true operaphile.

At Lyric, you'll be amazed, replenished, and inspired with must-see, must-hear live experiences. Through the timeless power of voice, acting that brings characters to life in triumph and tragedy, the splendor of a great orchestra and chorus — coupled with theater, dance, design, and truly magical stagecraft — Lyric is devoted to immersing audiences in worlds both familiar and unexpected, creating shared experiences that resonate long after the curtain comes down.



John Mangum
*General Director,
President & CEO*

Enrique Mazzola
Music Director

Lyric

Welcome to your Lyric

From the Chair and the General Director

Welcome to Lyric Opera of Chicago!

For this new-to-Chicago production of Mozart's *Così fan tutte*, one of the greatest of all operas, we find our quartet of lovers enjoying the pleasures of a sun-drenched 1930s seaside resort. Our magnificent cast offers an exciting mix of long-awaited debuts and the returns of friends of long standing.

As Fiordiligi, we welcome one of today's most engaging singing actresses, Jacquelyn Stucker, to Lyric for the first time. This season, she sings Ginevra in new productions of Handel's *Ariodante* at both the Paris Opéra and Covent Garden,



and she debuts at the Metropolitan Opera as the Countess in *The Marriage of Figaro*. Her slightly less serious sister, Dorabella, is sung by Italian mezzo-soprano Cecilia Molinari, who comes to us fresh from a triumph as Rosina in Rossini's *The Barber of Seville* at the Vienna State Opera.

As Ferrando, one of the two suitors pursuing our heroines, American-born Cuban and Colombian tenor Anthony León makes his Lyric debut. This outstanding young singer was a winner at the 2023 Metropolitan Opera Laffont Competition and first-prize winner at Operalia in 2022. Our Guglielmo is none other than Ian Rucker, recent alumnus of our Patrick G. and

Shirley W. Ryan Opera Center, whose career is really taking off. He wowed Lyric audiences with his virtuoso turn in *Carmina Burana* in the fall, and he follows his Guglielmos here with performances as the Count in *The Marriage of Figaro* at Scottish Opera.

On the podium for this exploration of love, and all of its glories and challenges, is Music Director Enrique Mazzola, conducting the second work in our traversal of the three immortal Mozart-DaPonte operatic collaborations. Next season, we're excited to share that Enrique will finish the trilogy as we return to *Don Giovanni*. We hope to see you then, and many times in between. Thank you so much for being with us, and, with your support of Lyric, helping to make all this sunshine possible.


SYLVIA NEIL
Chair of the Board


JOHN MANGUM
General Director, President & CEO,
The Women's Board Endowed Chair

Board of Directors

OFFICERS

The Honorable J.B. Pritzker
The Honorable Brandon
Johnson

*Honorary Chairs
of the Board*

Sylvia Neil
Chair of the Board

Craig Martin,
Chair-Elect

Edgar D. Jannotta

Allan B. Muchin
Co-Chairs Emeritus

David T. Ormesher
*Co-Chair Emeritus &
Chair of the Executive
Committee*

John Mangum
*General Director,
President & CEO
The Women's Board
Endowed Chair*

James L. Alexander
Enrique Mazzola
Shirley Welsh Ryan
Eric S. Smith
Penelope Steiner
Nasrin Thierer
Vice Chairs

Donna Van Eekeren
Secretary

Dan Grossman
Treasurer

Vincente F. Milianti
Assistant Treasurer

LIFE DIRECTORS

Julie Baskes
Gilda R. Buchbinder
Sonia Florian^o

Ronald J. Gidwitz
Ruth Ann M. Gillis

J. Thomas Hurvis
Edgar D. Jannotta

George E. Johnson
Stephen A. Kaplan

Susan Kiphart
Robert W. Lane

Allan B. Muchin
Gordon Segal

Robert E. Wood II

DIRECTORS

Katherine A. Abelson⁺
James L. Alexander^{*}

Jennie Huang Bennett
Louise Bernard

Santino Bibbo
Bruce Braun

Allan E. Bulley, III
John E. Butler

Marion A. Cameron-Gray^{*}
Amy Carbone^{*}

Orit Carpenter
Jane Chu^{*}

Richard W. Colburn^{**}
Francesca Cornelli

Vinay Couto
Lester Crown^{*}

Laura DeFelice
Dan Draper⁺

Allan Drebin^o

Charles Droege⁺
Chaz Ebert

Anne Edwards
Lois Eisen

James E. Fellowes
Matthew A. Fisher

Steven L. Fradkin^{*}
Karen Freeman-Wilson

Denise Gardner
Sarah Garvey⁺

Ethel C. Gofen
Melvin Gray

Karen Z. Gray-Krehbiel
Maria C. Green

Dan Grossman^{*}
Gary Haase^{*}

Gregory K. Jones
Neil T. Kawashima

Kip Kelley II^{*}
Lori Ann Komisar

Josef Lakonishok^{*}
Philip G. Lumpkin^{*}

John Mangum^{*}
Craig C. Martin^{*}

Samir Mayekar^{*}
Enrique Mazzola^{*}

Robert J. McCullen
Blythe J. McGarvie

Dorri McWhorter⁺
Mimi Mitchell

Frank B. Modruson^{**}
Linda K. Myers

Jeffrey C. Neal
H. Gael Neeson

Sylvia Neil^{*}

Gregory J. O'Leary^{*}
Sharon F. Oberlander

Olufunmilayo I. Olopade
David T. Ormesher^{*}

Anna Paglia
Matthew J. Parr

Jane DiRenzo Pigott^{*}
Tanya Polsky^{*}

Jose Luis Prado
Don M. Randel

John Robak
Brenda Robinson^{*}

Joseph O. Rubinelli, Jr.^{*}
Richard O. Ryan

Shirley Welsh Ryan^{*}
E. Scott Santi^{*}

Nancy Santi
Christine Schyvinck

Nancy S. Searle
Marsha Serlin

Brenda M. Shapiro^{*}
Richard W. Shepro⁺

Eric S. Smith^{*}
Kevin Smith

Penelope Steiner^{*}
Mary Stowell

Nasrin Thierer^{*}
Cherryl T. Thomas^{*}

Bryan Traubert^{*}
Olivia Tyrrell^{*}

Donna Van Eekeren^{*}
Roberta L. Washlow

William Mason
General Director Emeritus

⁺ Audit Committee
^{*} Executive Committee
[•] National Member
^o Deceased

Coming Attractions

At the midway point of the season, a look ahead at the bold mix of Lyric's offerings

"I would love for Lyric to be a place where all sorts of creative musical artists can see themselves and their work," said John Mangum, General Director, President and CEO of Lyric Opera of Chicago. He was speaking in advance of the company's world premiere of *A Night of Mellon Collie and Infinite Sadness* — and the innovative production's sold-out success seems to indicate that the process is well underway. In this season and beyond, the company is intentionally broadening its offerings. For nearly seven decades, Lyric has been synonymous with the pillars of the operatic repertoire, and that won't change (take note: the company's own *Ring* cycle is on the horizon for 2029). Yet new audiences are finding their way to the opera house as well, for more world premieres, genre-bending collaborations, concerts, and films with live orchestra. It's intentional.

"We have a duty as one of the world's leading opera companies to further the art form, to develop the art form, to create new work," he says. "Opera is a much wider net than one might assume. There's capacity for creative expression in this art form that spans the boundaries — the false boundaries — of different genres."

The world premiere of *safronia*, onstage at Lyric April 17 and 18, provides a salient example. The evocative new work, commissioned from Chicago's first Poet Laureate, avery r. young, draws on Black folklore and poetic narrative, and is rich with the musical lineages of gospel, blues, funk, and soul. It's a deeply personal story that might never have been told were it not for young's memorable contributions to the company's pandemic era *Twilight: Gods* production. There, young's poetic narration connected scenes and helped reformulate





El último sueño de Frida y Diego brings Kahlo's work to vivid life on stage.

Photo by Cary Weaver / San Francisco Opera

Wagner's *Ring* cycle as a site-specific, communal experience. *safronia* marks the Chicago native's first foray into opera, penning both the score and the libretto himself. This semi-staged production, directed by Timothy Douglas in his Lyric debut, marks a significant addition to Lyric's ongoing commitment to new work that reflects the cultural vibrancy of Chicago and the stories of the communities that shape it.

Similarly contemporary is Gabriela Lena Frank and Nilo Cruz's *El último sueño de Frida y Diego*, which received its premiere in 2022, and will run at Lyric March 21 through April 4, 2026. The work presents an imaginary tale taking place on the Day of the Dead, when Mexican artist Frida Kahlo crosses over from the underworld for 24 short hours with Diego Rivera, who remains in the living world, alone and grieving her loss. The pair's legendary marriage — and revolutionary art —

arrive onstage with vivid colors, surrealist touches, and lush, evocative music sung in Spanish and inspired by Mexican folk music traditions.

Lyric's increasingly popular *Live to Film* concert series — which this season included the charming *Coco* — continues April 10 and 11 with *Mary Poppins*. Audiences will have a chance to see a much younger Dick Van Dyke (who recently marked his 100th birthday) join a high-flying Julie Andrews in this legendary masterpiece.

Mangum sees film as a natural cousin to opera rather than a detour from it. In the 19th century, he notes, opera was the medium for epic storytelling; in the 20th, film emerged as the vehicle for those broad narratives. "The 19th century's operetta, light music, *singspiel* and the like developed into the musical theater

of the 20th century,” he says. “The films that we’re putting on at Lyric are true descendants.”

Rounding out the 2025/26 Season are two presentations that showcase powerful sopranos. Renée Fleming returns to Lyric for a solo recital (surprisingly, her first in the house) derived from her 2021 Grammy winning recording with the Metropolitan Opera’s music director Yannick Nézet-Séguin at the piano. Entitled “Voice of Nature: The Anthropocene,” the program includes music in a folk style, as well as songs commissioned by Fleming from living composers such as Nico Muhly — and also features gorgeous, virtuosic selections by Handel and Canteloube. The eclectic repertoire list includes Romantic favorites, too, and features immersive video curated by the National Geographic Society that invites reflection on the beauty of our planet.

Mangum has often stated his commitment to “the tried and true cornerstones of the repertoire,” and there is perhaps no better example than Puccini’s *Madama Butterfly*, running March 14 to April 12, 2026 (though it’s interesting to note, too, that Mangum cites the work’s appropriation of Eastern source material as an example of the pliable, hybrid nature of opera, hiding in plain sight).

This breathtaking production, conceived and directed by Matthew Ozawa, Lyric’s Chief Artistic Officer, is a much-acclaimed hit, fusing the colorful splendor audiences have grown to expect from the work with an innovative frame. Time past and time present onstage, love and loss, a hypnotic score — sounds like grand opera at its finest. **L**

Coming attractions, top to bottom: Renée Fleming in recital; avery r. young’s *safronia*; Mary Poppins in *Concert Live to Film*; *Madama Butterfly*



Photo by Peter Smith



Photo by John Shaw

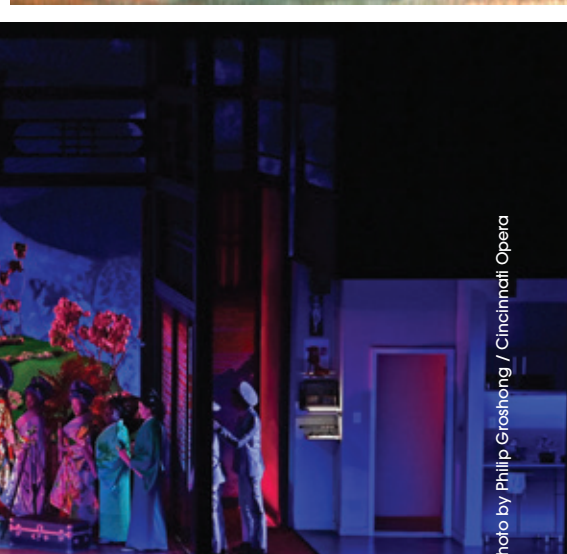


Photo by Philip Gresham / Cincinnati Opera

The **2025 | 26** Season

Lyric
OPERA OF
CHICAGO

Richard Strauss

Salome

January 25 - February 14, 2026

Mozart

Così fan tutte

February 1 - 15, 2026

Renée Fleming in Recital

Voice of Nature: The Anthropocene

February 5, 2026

Puccini

Madama Butterfly

March 14 - April 12, 2026

Gabriela Lena Frank & Nilo Cruz

El último sueño de Frida y Diego

March 21 - April 4, 2026

Movie Nights at Lyric

Mary Poppins in Concert Live to Film

April 10 & 11, 2026

avery r. young

safronia

April 17 & 18, 2026

Create your own series and save!

lyricopera.org 312.827.5600

**ROBERT AND PENELOPE
STEINER FAMILY FOUNDATION**
2025/26 Presenting Season Sponsor

Lyric Opera of Chicago thanks its Official Airline, **United Airlines**, and acknowledges support from the **Illinois Arts Council**.
Photo: John Shaw/Big Foot Media

Two officers, convinced all women are fickle in love, hatch a plan to switch places and woo each other's fiancées in disguise — but the women know exactly what they're up to from the start.

Hilarity and dazzling arias ensue in a 1930s-era seaside country club, where frothy costumes and splashy sets belie an undercurrent of distrust and deception on par with a binge-worthy reality show.

Conducted by Enrique Mazzola and featuring a fresh ensemble of star artists alongside Grammy honorees Ana María Martínez and Rod Gilfry, Così sets off vocal pyrotechnics that bubble and burst with athleticism.



Così fan tutte at
San Francisco
Opera, 2021

Lyric

Così fan tutte



Local Focus, Global Reach

Willkie Farr & Gallagher LLP delivers unparalleled legal advice and dedicated client service across a wide spectrum of business areas, industries, countries and cultures.

Willkie's Chicago office is a destination for commercial and business legal matters of strategic, economic and reputational impact. In addition to our laser focus on service excellence, we are committed to civic involvement, pro bono, and diversity & inclusion.

Willkie Chicago | Est. 2020 | 100+ lawyers | Craig C. Martin

WILLKIE

1,200 LAWYERS | 15 OFFICES | 6 COUNTRIES

Attorney Advertising

Così fan tutte

Opera in two acts in Italian

Music by **Wolfgang Amadeus Mozart**

Libretto by **Lorenzo Da Ponte**

February 1M, 4M, 7, 10, 13, 15M, 2026

CHARACTERS IN ORDER OF VOCAL APPEARANCE

Ferrando
Guglielmo
Don Alfonso
Fiordiligi
Dorabella
Despina

Anthony León⁺
Ian Rucker^{••}
Rod Gilfry
Jacquelyn Stucker⁺
Cecilia Molinari⁺
Ana María Martínez

Conductor
Original Director
Revival Director
Set and Projection Designer
Costume Designer
Lighting Designer
Revival Lighting Designer
Chorus Director
Wig & Makeup Designer
Assistant Director
Stage Manager
Recitative Accompanist
Stage Band Conductor
Musical Preparation

Prompter
Projected English Titles

Enrique Mazzola
Michael Cavanagh⁺
Roy Rallo
Erhard Rom⁺
Constance Hoffman
Jane Cox⁺
Chris Maravich
Michael Black
John Metzner
Katrina Bachus
Alaina Bartkowiak
Jerad Mosbey
Francesco Milioto
Jerad Mosbey
Kseniia Polstiankina
Barrad
Susan Miller Hult
Christopher Bergen

First performed at the Burgtheater in Vienna on January 26, 1790.
First performed by Lyric Opera of Chicago on November 9, 1959.

⁺ Lyric debut
^{••} Alumnus, The Patrick G. and Shirley W. Ryan Opera Center

Synopsis

Act One

Don Alfonso is trying to enlighten Ferrando and Guglielmo as to the true nature of women. He places a bet that he can prove their fiancées, Dorabella and Fiordiligi, are not the icons of purity the young men believe them to be. Both sides are confident of victory within 24 hours, and during this period Ferrando and Guglielmo agree to do as they are told by Alfonso.

Sisters Fiordiligi and Dorabella are celebrating the virtues of their lovers. Alfonso tells them that their men have been called up and must leave immediately for the “front lines.” The men feign a tearful farewell scene and “go off to war.” The women are devastated but their maid, Despina, tells them to look on the bright side and have a good time in their absence — in other words, behave exactly as men would do.

Don Alfonso enlists Despina in his scheme, and he presents two “Albanian” friends to the sisters. Neither Fiordiligi nor Dorabella recognize Guglielmo and Ferrando in disguise.

Offended to see the strange men, Fiordiligi and Dorabella are repelled by their advances. They declare fidelity to their lovers. The young men are delighted but Alfonso is still confident in his ultimate triumph.

The sisters continue to grieve for their men at the front. The two “Albanians” return and, despondent in the women’s rejection, swallow “poison” and collapse. The terrified girls call for Despina, who goes to find a doctor who claims to cure any illness by magnetism. The men revive and, believing they are in heaven, demand a kiss from their “angels,” Fiordiligi and Dorabella. The sisters rebuff their advances once again.

INTERMISSION

Act Two

Despina persuades the sisters to befriend their new admirers. They decide on preferences: Dorabella chooses Guglielmo; Fiordiligi selects Ferrando. Each has instinctively chosen the other’s partner. Dorabella yields to Guglielmo, exchanging lockets as a pledge of fidelity. Meanwhile, Fiordiligi rejects Ferrando.

Ferrando and Guglielmo report on their progress. Ferrando is furious at the infidelity of his fiancée, Dorabella.

Despina and Dorabella put pressure on Fiordiligi to have fun. Fiordiligi decides she must run away to join Guglielmo at war, but Ferrando confronts her again and she finally yields. Agonized, Guglielmo witnesses it all. Don Alfonso has proven his point and won the bet.

Don Alfonso and Despina arrange for the new couples to be “married” by Despina, disguised as a notary. As the girls sign their names, a military band is heard, signaling that the soldiers have returned unexpectedly. In the confusion, the two “Albanians” disappear, soon reemerging without their disguises and feigning shock at the evidence of a wedding.

The entire plot is finally revealed. All four lovers’ certainties have been destroyed and no one knows quite what to believe, except that human nature is far more complex than they ever imagined.

Courtesy of San Francisco Opera

LYRIC’S 2025/26 PRESENTING

SEASON SPONSOR:

**The Robert and Penelope
Steiner Family Foundation**

PRODUCTION SPONSORS

The Negaunee Foundation
The Julius Frankel Foundation
Randy L. & Melvin R. Berlin

WILLKIE
WILLKIE FARR & GALLAGHER LLC

**BULLEY &
ANDREWS**
Building Matters®

Alice & John Butler⁺
H. Gael Neeson⁺
Sylvia Neil & Daniel Fischel⁺
Robert and Penelope Steiner
Family Foundation⁺
Mary Stowell⁺
Zell Family Foundation⁺

+ Enrique Circle members

° Deceased

Lyric Opera of Chicago gratefully
acknowledges the support of the
NIB Foundation Italian Opera Endowed
Chair.

Supertitles for *Così fan tutte* by Christopher
Bergen are provided by the San Francisco
Opera Association

San Francisco Opera Production
Scenery construction and painting by
the San Francisco Opera Scene Shop
Costumes fabricated by the San
Francisco Opera Costume Shop

Additional costumes by:
Krostyne Studio
Dynamix

Lyric Opera of Chicago thanks its
Official Airline, United Airlines.

APPROXIMATE TIMINGS

**This production will be performed
with one intermission.**

Act One	1 hour 35 minutes
Intermission	30 minutes
Act Two	1 hour 25 minutes
TOTAL	3 hours 30 minutes

Puccini

Lyric
OPERA OF
CHICAGO

Madama Butterfly

Mar. 14 - Apr. 12

A timeless tragedy — in dazzling
contemporary technicolor.

lyricopera.org/butterfly

ROBERT AND PENELOPE
STEINER FAMILY FOUNDATION
2025/26 Presenting Season Sponsor

Lyric's presentation of Puccini's *Madama Butterfly* is generously made possible by Lisbeth Stiffel, Invenery, ITW, Randy L. & Melvin R.* Berlin, and Marion A. Cameron-Gray.
Lyric Opera of Chicago thanks its Official Airline, United Airlines, and acknowledges support from the Illinois Arts Council. *deceased
Photo: John Shaw/Lyric Opera of Chicago

NEXT

\$25 tickets for college students.

lyricopera.org/next

Lyric
OPERA OF
CHICAGO

Lyric Young Professionals

*Wanted: Opera-curious networkers for
\$35 tickets and access to special events.*

lyricopera.org/lyp

Photos: Kyle Flubocker

Both Cynical and Heartfelt: The Enigma of *Così fan tutte*

The libretto of this masterpiece has proved troublesome. Mozart's psychological insights, however, transcend the challenging plot, and illuminate enduring truths.

By Martha C. Nussbaum



Photo by Cory Weaver / San Francisco Opera

First performed on January 26, 1790, at the Burgtheater in Vienna, *Così fan tutte*, “Thus Do All Women” (subtitled “The School for Lovers”), was initially well received, but had only five performances during Mozart’s lifetime, on account of the death of the emperor Joseph II only a month later, and the ensuing mourning period. (Mozart would die less than two years later, on December 5, 1791.) During the nineteenth and early twentieth centuries the opera endured a long eclipse, being considered offensive and immoral. Sometimes, loving the music, people attempted to provide it with a totally different libretto: in one version, the replacement text was that of Shakespeare’s *Love’s Labours Lost* in French! Now, however, the opera is always in the top 20 of most-performed operas worldwide, ranking slightly below *The Magic Flute*, *The Marriage of Figaro*, and *Don Giovanni*. The beauty of its music has won the hearts of audiences.

Producers, critics, and audiences, however, continue to find *Così* a deeply problematic work. The great critic Joseph Kerman goes so far as to write, “Even the most devout Mozartian will have to admit that there is something unsatisfactory about *Così*” — which he calls



Photo by Cory Weaver / San Francisco Opera

Above: In this production, Ferrando and Guglielmo make their bet, appropriately enough, in a locker room. **Opposite:** Despina embodies the libretto's cynicism, as she encourages Fiordiligi and Dorabella to take advantage of their situation.

"Mozart's most problematic work." What is the problem? In essence, it is a felt dissonance between the heartless spirit of Lorenzo Da Ponte's libretto and the remarkable emotional expressivity of the music, especially in the second act. This dissonance is then rendered more problematic still by the cookie-cutter ending in which everything snaps back to the way it was before Act Two.

Da Ponte's libretto is polished, well-constructed, witty — and cynical. Don Alfonso, the opera's resident philosopher/observer/cynic, who creates the plan to test the fidelity of the young women, opines that emotions are short-lived and fickle, but the libretto ultimately goes yet further, suggesting that they are altogether unreal and factitious. Much of the work's humor, in Act One, derives from the fact that while the women take their own emotions seriously, we are urged to see that they are only play-acting, imitating literary expressions of passion. (Singer-actresses have a challenge: while acting they must create the impression of mere play-acting, and later on show how different that is from genuine feeling.) Throughout Act One, Mozart's music serves Da Ponte's cynical purpose quite well, creating an artificial comedy with characters who are essentially

cardboard cutouts and objects of knowing laughter (by Don Alfonso and Despina, and by us). We know very little about the nature of Mozart and Da Ponte's collaboration, but we certainly have no evidence that, like Verdi, Mozart controlled the process and insisted on getting his way; the legendarily self-promoting Da Ponte's letters suggest the opposite, rightly or wrongly.

But Mozart cannot help taking emotions seriously, and by Act Two his genius for emotional insight, range, and particularity takes over, breaking the clever mold and subverting its purpose. In the other Da Ponte operas, it is also true that Mozart supplies emotional depth to texts that might have been set otherwise. (Just imagine, for example, in how many

This is Mozart — who shows again and again that playfulness and humor can be a supreme expression of reciprocity in love.



Photo by Cory Weaver / San Francisco Opera

Initially, the sisters at least appear to put up a valiant defense.

ways the text of Cherubino's aria "Voi che sapete" in *The Marriage of Figaro* might have been set, and how completely it might have lacked the tender longing that it in fact expresses.) In *Così*, however, the music doesn't just render emotionally determinate a text that is indeterminate; it actually subverts the entire point of the libretto. No, Don Alfonso, emotions are not just a game; they are real, and people have deep, interesting, and highly individual emotional lives.

In Act One, the girls are not very different from one another, and both play-act at emotions with a grandiosity that signals an absence of authentic self-knowledge and real erotic experience. In Act Two, both discover depths of emotional response in themselves — in highly particular ways. Both Kerman and philosopher Bernard Williams focus on the duet between Fiordiligi and Ferrando, "Fra gli amplessi," ("In the embraces"), which shows Fiordiligi discovering love, and so discovering new capacities in herself. Emotions strike both lovers as mysterious, but also as totally real and urgent, as real as anything in the world can be. (And this is so, whether the emotions actually last or not: so long as they exist, they are both real and at the core of the person's humanity.) The contrast between Fiordiligi's Act One aria, where she is playing around with ideas of constancy like a would-

be melodrama heroine, and this duet, with its soaring phrases and tremulous expression of passion, could not be more striking — and moving, too, as if we are seeing a mature woman being born.

Kerman seems to prefer the emotions of the serious pair to those of the comic pair simply because they are serious. Williams's preference for the serious pair must be understood in connection with his often-expressed preference for Wagner's *Tristan und Isolde* as the operatic paradigm of genuine love. (In introducing the posthumous collection in which his article on *Così* appears, Williams's widow notes that he tested their budding relationship by taking her to a performance of *Tristan*, to see how much she loved it!)

But this is Mozart, the same Mozart who shows again and again that playfulness and humor can be a supreme expression of reciprocity in love. (And isn't this

Emotions strike both lovers as mysterious, but also as totally real and urgent, as real as anything in the world can be.

an important truth in real life?) So I propose (*contra* Williams and Kerman, who are a bit contemptuous of the more light-hearted lovers) that we also do justice to the other pair. The moment in all opera that most unfailingly makes me weep for sheer joy at the precariousness and lovability of the world is Dorabella and Guglielmo's Act Two duet, "Il core vi dono" ("I give you a heart"). The usual staging has him give her a heart-shaped locket as a token of love. She accepts it, and they then joke that the heart that was in one breast is now beating in the other's: His heart (the locket) is now on her breast, and (she says) hers has now gone over there and is beating in his.


The music first expresses tender playful alternation, and then, with the delicate staccatos of the line "E batte così" ("And beats just so"), they are suddenly together. (That's where I cry, invariably.) "O cambio felice," "O happy exchange." Dorabella has already said that she chooses Guglielmo because he seems more playful — and one is painfully aware that Ferrando, her original fiancé, was therefore utterly wrong for her (and right for Fiordiligi), since he is all lofty sentiment and no play. And now, with Guglielmo, she suddenly finds what she wanted all along: in the intimacy of joking and play she finds love's reality, as the hearts change places and then somehow beat in harmony, though from the opposite place.

In effect, as Kerman wittily puts it, the second act belongs not to Don Alfonso but to "Don Wolfgango," who, being himself, took emotion very seriously — including its soaring heights but including, as well, its capacity for tender play — and probed the characters' depths with varied and aching effect. By offering the maid Despina no corresponding individuality in passion, Mozart seems to suggest that, in this world, emotional individuality requires leisure and may be incompatible with labor.

Act Two belongs to Mozart, but it must end as Da Ponte wrote it. Although the work has been staged in multiple ways, we are evidently supposed to think that the girls go back to their original partners. (Alfonso tells the lovers to marry the girls *in spite of* their

fickleness, which implies that they take their original partners back. This is also the "lesson" intended from start to finish — in the libretto, that is.) According to the libretto, there is no loss, because all is convention and emotions are factitious anyway. But given the music of Act Two, the ending is deeply disturbing, and the message finally conveyed a rather unpleasant one: As Williams puts it, what's posited is "the idea that emotions are indeed deep, indeed based on reality, but the world will go on as though they were not, and the social order, which looks to things other than those emotional forces, will win out." We might even see in the work a critique of the institution of marriage, as inimical to genuine love, at least for women.

Williams thinks that Mozart and Da Ponte collaboratively create this dark and disturbing insight. I find more persuasive Kerman's suggestion that the libretto is one thing, the music in some respects quite another, and Mozart is trapped by the contrivance of the libretto, creating an ending that turns out jarring and unsatisfying.

And what of the war to which the men march off to cheerful choral song in praise of the military life? Is that part of the comic contrivance, or is it all too real? Might war not be another way in which the conventions of the world treat human emotions as if they do not matter? John Cox, director of Lyric's 2017/18 production of *Così fan tutte*, wrote that as he sees it, the entire comedy "is played out on the edge of this abyss," and that the unsettling darkness of the ending derives from this background reality. This suggestion (whether it's about the libretto or the music, or both) dovetails with the ideas I have been exploring, though it also suggests a different orientation for our attention. Such layers show the work's multivocal richness. And they surely do not negate the music's astonishing capacity for the expression of love's risks and delights. 

Martha C. Nussbaum is Ernst Freund Distinguished Service Professor of Law and Ethics at The University of Chicago. Her new book, The Republic of Love: Opera and Political Freedom, appears in April 2026.

Artist profiles

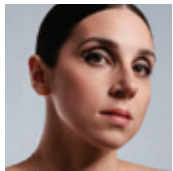


JACQUELYN STUCKER FIORDILIGI

Lyric debut

This season the soprano appears as Ginevra in two new productions of *Ariodante*, at

Opéra National de Paris under Raphaël Pichon and for the Royal Ballet and Opera under Stefano Montanari. She returns to the Metropolitan Opera as The Bride in the American premiere of Kaija Saariaho's *Innocence* under Susanna Mälkki, and closes the season in Philip Venables' *We Are the Lucky Ones* at Tiroler Festspiele Erl, reprising her starring role of Two. Other recent highlights include her debuts at the Metropolitan Opera as Contessa Almaviva led by Joana Mallwitz, at Opéra national de Paris as Lucia in Thomas Adès' *The Exterminating Angel*, and at Santa Fe as the Governess in *The Turn of the Screw*. Earlier performances include Rosalinde in *Die Fledermaus* at Staatsoper Hamburg, Armida in Handel's *Rinaldo* at Glyndebourne Festival and, at Festival d'Aix-en-Provence, both Dalila in Rameau's *Samson* in a new conception by Claus Guth and Raphaël Pichon and the title role in Monteverdi's *L'Incoronazione di Poppea* in the acclaimed staging by Ted Huffman.



CECILIA MOLINARI DORABELLA

Lyric debut

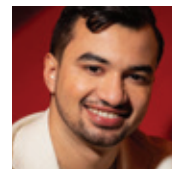
Recent highlights for the Italian mezzo-soprano include Rosina in *Il barbiere di Siviglia* at Wiener Staatsoper, Cherubino in *Le nozze di Figaro* at Semperoper Dresden, Sesto in *Giulio Cesare* at The National Opera and Ballet Amsterdam, Idamante in *Idomeneo* at Teatro Carlo Felice Genova, Béatrice in *Béatrice et Bénédict* at Opéra National de Lyon, Orfeo in *Orfeo ed Euridice* at Teatro la Fenice Venezia, Meg Page in *Falstaff* at the Salzburger Festspiele, Rosina in *Il barbiere di Siviglia* at Deutsche Oper Berlin, Isabella in *L'italiana in Algeri* at Teatro alla Scala, Cherubino in *Le nozze di Figaro* at Teatro de la Maestranza Sevilla, and Ariodante at the Festival della Valle d'Itria. She sang Dorabella in *Così fan tutte* at Wiener Staatsoper, Abenamet in *Zoraida di Granata* at Donizetti Festival Bergamo, Idamante in *Idomeneo* at National Opera and Ballet Amsterdam, and Rosina in *Il barbiere di Siviglia* at the Glyndebourne Festival. Molinari has been praised for her performances on the concert stage as well with orchestras including the Orchestra Filarmonica del Teatro alla Scala di Milano, the Royal Concertgebouw Orchestra, the Insula Orchestra, the Orchestra Sinfonica della RAI, the PKF - Prague Philharmonia, and the Borusan Istanbul Philharmonic Orchestra. Molinari was named a Best Soloist in the Premio Abbiati 2025.



ANA MARÍA MARTÍNEZ DESPINA

Previously at Lyric: 11 roles since 2008/09, most recently Florencia/*Florencia en el Amazonas* (2021/22) and Cio-Cio-San/*Madama Butterfly* (2019/20).

Later this season, the Grammy Award winning soprano will return to Lyric as Catrina in Gabriela Lena Frank's *El último sueño de Frida y Diego*, and sings a *Beyond the Aria* recital with pianist Craig Terry at the Harris Theatre. Last season, Martínez returned to LA Opera with appearances as Margarita Xirgu in Osvaldo Golijov's *Ainadamar*, marking the company premier, and as Despina in *Così fan tutte*, conducted by James Conlon. She also made her house debut at Pittsburgh Opera as the title role in *Tosca*, premiered her recital program "Unveiling" at the Houston Hobby Center with Andy Einhorn, appeared in residency with the Aspen Music Festival where she reprised "Unveiling," and gave a performance of Ravel's *Schéhrazade* with conductor Fabien Gabel. She was the inaugural recipient of the Lynn Wyatt Great Artist Award from Houston Grand Opera, where she made role debuts as Carmen and Cio-Cio-San, in addition to performing the title role of *Rusalka*, Rosina in *Il barbiere di Siviglia*, Nedda in *Pagliacci*, Mimi in *La Bohème*, Donna Elvira in *Don Giovanni*, and Lucero in the world premiere of Daniel Catán's *Salsipuedes*. Additional performances include Elisabetta in *Don Carlo* with Bayerische Staatsoper; Contessa in *Le nozze di Figaro*, the title role of *Carmen*, Cio-Cio San, and Mimi in *La Bohème* with LA Opera; and Donna Elvira in *Don Giovanni* and Cio-Cio San in *Madama Butterfly* with the Metropolitan Opera. She is a Professor of Voice at the Shepherd School of Music at Rice University.



ANTHONY LEÓN FERRANDO

Lyric debut

The American-born Cuban and Colombian tenor was named a 2023 Metropolitan Opera Laffont Competition winner and received

the First Prize and the Don Plácido Domingo Ferrer Zarzuela Prize at Operalia in 2022. He is a former member of the Domingo-Colburn-Stein Young Artist Program at LA Opera. Recent engagements include singing Nadir in Bizet's *Les pêcheurs de perles* for his debut at the Berlin Staatsoper, Lysander in Britten's *A Midsummer Night's Dream* at Opera Theatre of Saint Louis, and Ferrando in *Così fan tutte* at LA Opera. Previously León appeared as Nadir at Cologne Opera, sang Telemaco in *Il ritorno d'Ulisse* at the Aix-en-Provence festival, and made debuts with the Chicago Symphony at the Ravinia Festival and the LA Philharmonic at the

Hollywood Bowl with Maestro Gustavo Dudamel. Other recent notable performances include creating the role of The Consumer in the world premiere of Ellen Reid's opera *The Shell Trial* at Dutch National Opera in Amsterdam.



IAN RUCKER GUGLIELMO

Previously at Lyric: Five roles since 2022/23, most recently Schaunard/*La Bohème* (2024/25) and Foreman/*Jenůfa* (2023/24).

This season's highlights for the American baritone include Dandini/*La Cenerentola* at Lyric Opera of Kansas City and Count Almaviva/*The Marriage of Figaro* at Scottish Opera. Also this season, Rucker was the baritone soloist in *Carmina Burana* at Lyric. He recently performed the title role in the world premiere of *The Story of Billy Budd, Sailor* at Festival d'Aix-en-Provence, was a prize winner in the 2024 Neue Stimmen vocal competition, and sang the role of Diener IV in Strauss's *Capriccio* at the 2024 Salzburg Festival. While an Ensemble member with the Ryan Opera Center, Rucker sang Man in Bar/*Champion* (2023/24), Moralès/*Carmen* and Raimbaud/*Le Comte Ory* (both 2022/23). He spent a summer at the Aspen Summer Music Festival as a Renée Fleming Artist, and was also an Apprentice Artist with Palm Beach Opera. Competition successes include semi-finalist in the 2025 Operalia competition, 1st Prize in Tier II of the James Toland Vocal Arts Competition, and encouragement awards in both the Wisconsin and Georgia districts of the Metropolitan Opera Laffont Competition. Rucker received a bachelor's degree in Vocal Performance from The University of Wisconsin - Eau Claire and a masters in Vocal Performance at the Indiana University Jacobs School of Music.



ROD GILFRY DON ALFONSO

Previously at Lyric: Three roles since 1994/95, most recently Marcello/*La Bohème* (2001/02) and Figaro/*Il barbiere di Siviglia* (1994/95).

The American baritone is a two-time Grammy Award nominee, most recently for his performance in the title role of Messiaen's *Saint François d'Assise* in Amsterdam. This season, Gilfry returns to the Metropolitan Opera as the Father-in-Law in Kaija Saariaho's *Innocence* and reprises the role of Owen Hart in Jake Heggie's *Dead Man Walking* with San Francisco Opera. At Lyric in 2022/23, he performed Alfred Stieglitz in Kevin Puts' *The Brightness of Light* with Renée Fleming, a concert production which has appeared at Los Angeles Opera, Dallas Symphony, Baltimore Symphony, Colorado Symphony,

National Symphony Orchestra, Oregon Symphony, Tanglewood Festival, Naples (FL) Philharmonic, and Aspen Music Festival and School, among other venues. Recent highlights include Don Alfonso in *Così fan tutte* with James Conlon at LA Opera; Alberto Roc in the American premiere of Thomas Adès's *The Exterminating Angel*, Claudius in Brett Dean's *Hamlet* (also at Opera Australia), Owen Hart in *Dead Man Walking*, and Danilo in a new production of *The Merry Widow* at the Metropolitan Opera; Kaija Saariaho's *Innocence* at the San Francisco Opera; and Howard K. Stern in Mark-Anthony Turnage's *Anna Nicole* with the New York City Opera and the Royal Ballet and Opera. Gilfry originated the role of Robert McNamara in Washington National Opera's world premiere *Written in Stone* by Huang Ruo and David Henry Hwang.



ENRIQUE MAZZOLA CONDUCTOR

Lyric's Music Director — the third in the company's history — is internationally renowned as an interpreter and champion of *bel canto* opera and as a specialist in French

repertoire and the works of Verdi. Mazzola's recently completed tenure as Principal Guest Conductor at Deutsche Oper Berlin included recordings of *Dinorah* and *Hérodiade* and performances of *Le prophète*, *Il barbiere di Siviglia*, *Werther*, *Falstaff*, *Vepres Siciliennes*, and *Les contes d'Hoffmann*. He served as Conductor in Residence for the Bregenz Festival from 2021 to 2024, where he conducted a new production of *Rigoletto* and recorded DVDs of *Rigoletto*, *Madama Butterfly*, *Die Freischütz*, *Ernani*, and *Mosè in Egitto*. He served as Artistic and Music Director of the Orchestre National d'Île de France from 2012 to 2019, and in 2018 was named a Chevalier de l'ordre des Arts et des Lettres. Mazzola made his debut at Lyric with *Lucia di Lammermoor* in 2016/17, and conducted Bellini's *I puritani* in 2017/18. During 2019/20, he led Verdi's *Luisa Miller* to launch the company's Early Verdi Series and, in his first performances as Music Director, opened Lyric's 2021/22 season with Sir David McVicar's new production of *Macbeth*. An accomplished interpreter of contemporary music, Mazzola recently conducted Missy Mazzoli and Royce Vavrek's *The Listeners* (2024/25) and Terence Blanchard's *Champion* (2022/23) at Lyric. He has conducted at the Metropolitan Opera, La Scala, the Théâtre des Champs-Élysées, and the major houses of Vienna, Berlin, Munich, Zurich, Moscow, and Tokyo, as well as a historic Meyerbeer cycle with Deutsche Oper Berlin. Past major European festivals have included Glyndebourne (including DVD releases of *Don Pasquale*, *Il barbiere di Siviglia*, and *Poliuto*), Salzburg (*Orphée aux Enfers*), Pesaro (Rossini Opera Festival), Venice, Aix-en-Provence, and Bregenz. Symphonic highlights include the Orchestre National du Capitole de Toulouse, Philharmonia Orchestra, Orchestre National de France,

Vienna Symphony, London Philharmonic, and Brussels Philharmonic. Mazzola was born in Barcelona, Spain, into a musical family, and grew up in Milan, where he studied violin and piano, earning diplomas in composition and orchestral conducting at the Conservatorio Giuseppe Verdi of Milan. *Enrique Mazzola is supported by the John D. and Alexandra C. Nichols Endowed Chair.*



MICHAEL CAVANAGH **ORIGINAL DIRECTOR**

Lyric debut

The late director's opera career spanned more than two decades, including more than 140 productions at companies throughout

North America and Europe. This production of *Così fan tutte* was created for San Francisco Opera in 2021 as part of his trilogy of Mozart / Da Ponte operas there. In 2021, Cavanagh became the artistic director and head of opera at the Royal Swedish Opera in Stockholm, where his notable successes included a new production of *Aida* and an esteemed production of *Sweeney Todd*. His seven productions at San Francisco Opera include *Nixon in China*, which he remounted in five cities including Dublin and Stockholm. In the United States, he also directed for the opera companies in Philadelphia, Boston, Honolulu, Austin, Kansas City, Minneapolis, and San Diego, among others.



ROY RALLO **REVIVAL DIRECTOR**

Previously at Lyric: *Il Trovatore* (2019)

Rallo began his career with Southern California's Long Beach Opera, where he directed original productions of Mozart's

Lucio Silla, Strauss' *Elektra*, and Bartok's *Bluebeard's Castle*. In Europe he has directed new productions of *Don Pasquale* and an original music theater piece, *Methusalem Project*, for the National Theater Weimar, *Ariadne auf Naxos* for Opéra National de Bordeaux, *Der Rosenkavalier* for Den Jyske Opera in Aarhus Denmark, and co-directed *Aida* for the Deutsche Oper Berlin, *Carmen* for the Nationaltheater Mannheim, and Busoni's *Doktor Faustus* for the Bavarian State Opera. In the U.S. he has revived productions for Portland Opera, Utah Opera, Opera Omaha, Pittsburgh Opera, Houston Grand Opera, and The Metropolitan Opera. At San Francisco Opera he has remounted revivals of *The Barber of Seville*, *Pique Dame*, *Il Trovatore*, *Partenope*, and his own staging of David Hockney's design for Strauss' *Die Frau ohne Schatten* as well as staging *The Barber of Seville* and *Transformations* for San Francisco Opera's Merola Opera Program.



ERHARD ROM **SET AND PROJECTION DESIGNER**

Lyric debut

Rom has designed settings for more than 250 productions across the globe. In both 2025 and in 2015 he was named as a finalist in the

Designer of the Year category for the International Opera Awards in London. His design work has frequently been displayed in the Prague Quadrennial International Design Exhibition and at the National Opera Center in Manhattan. His numerous credits include San Francisco Opera, Royal Swedish Opera, LA Opera, Houston Grand Opera, Seattle Opera, Dallas Opera, Washington National Opera, Wexford Festival Opera, Glimmerglass Festival, Vancouver Opera, Minnesota Opera, Opera Theatre of Saint Louis, Wolf Trap Opera, and Atlanta Opera. In 2014 he designed the European premiere of *Silent Night* for the Wexford Festival. Rom is currently designing the fourth part of a new production of the *Ring* cycle for Atlanta Opera, along with a new production of *Turandot*.



CONSTANCE HOFFMAN **COSTUME DESIGNER**

Previously at Lyric: *Bel Canto* (2015/16) and *Rigoletto* (2017/18)

The designer's collaborations in opera include work with the Glyndebourne Festival,

Paris Opera, Bregenzer Festspiele, Bayerische Staatsoper, and the Tokyo Opera Nomori, among others. She has designed costumes for San Francisco Opera, the Santa Fe Opera, Houston Grand Opera, LA Opera, Minnesota Opera, the Portland Opera, Opera Theatre of Saint Louis, and the Lincoln Center Festival. In addition, she has had a long association with The Glimmerglass Festival, whose productions have traveled regularly to New York City Opera. There, Hoffman designed costumes for *Paul Bunyan*, *Tosca*, and *Lizzie Borden*, which were televised on the *Live from Lincoln Center* broadcasts. Her extensive theater work has been seen on many stages in New York City, including the Public Theatre, the New Victory Theatre, The Second Stage, Theatre for A New Audience, Madison Square Garden, Radio City Music Hall, and the Joyce. For her Broadway debut, Hoffman earned a Tony nomination and an Outer Critics Circle Award for her designs for *The Green Bird*, directed by Julie Taymor. *Costume designers are supported by the Richard P. and Susan Kiphart Costume Designer endowment.*



JANE COX LIGHTING DESIGNER

Lyric debut

Cox won a Tony, a Drama Desk, and the Henry Hewes Design award in 2024 for her lighting for *Appropriate*, and received three

Tony nominations for *Macbeth* (2022), *Jitney* (2017) and *Machinal* (2014). She was awarded the Distinguished Achievement Award from the United States Institute for Theatre Technology in 2025. Recent designs include *Fidelio* for WNO; Donnacha Dennehy's *Land of Winter* with Alarm Will Sound; *The Boy and The Weir* at the Abbey Theater in Dublin (her hometown); *Minor Music* at Brooklyn Academy of Music; *Teeth The Musical* in NYC; and *The Marriage of Figaro*, *Così fan tutte*, and *Don Giovanni* at San Francisco Opera. Upcoming projects include *Rocky Horror Picture Show* on Broadway. She is a Professor of the Practice and Director of the Program in Theater and Music Theater at Princeton University, where she is also co-director for the Fund for Irish Studies. Jane has been a member of the Monica Bill Barnes Dance Company for more than 20 years. She is a member of Princeton's CreativeX working with the engineer Naomi Leonard and composer Dan Trueman on Rhythm Bots, a project investigating collective motion and rhythmic connection with robots, and plays traditional Irish flute with the group HUP! *Lighting designers are supported by the Mary-Louise and James S. Aagaard Lighting Director Endowed Chair.*



CHRIS MARAVICH REVIVAL LIGHTING DESIGNER

Lyric's lighting director served in the same position from 2006 to 2012 at San Francisco Opera, where he created lighting for many productions including *The Gospel of Mary*

Magdalene, *Così fan tutte*, *Turandot*, *Cyrano de Bergerac*, *Il tritico*, *Tosca*, *Simon Boccanegra*, *Don Giovanni*, *Nixon in China*, and *Attila*. He has collaborated on the lighting designs for *Wozzeck* (Finnish National Opera, Grand Théâtre de Genève), *Doktor Faust* at Staatsoper Stuttgart, *Tannhäuser* for Greek National Opera, and *La fanciulla del West*, *The Makropulos Case*, *The Daughter of the Regiment*, *Il trovatore*, *Samson et Dalila*, and *Macbeth* for San Francisco Opera. Maravich has also designed lighting for LA Opera, Opera Colorado, San Diego Opera, Opera Santa Barbara, Lyric Opera of Kansas City, Florida Grand Opera, Madison Opera, Cal Performances, and Opera San José. He currently serves as lighting supervisor for The Joffrey Ballet. *Chris Maravich is supported by the Mary-Louise and James S. Aagaard Lighting Director Endowed Chair.*



MICHAEL BLACK CHORUS DIRECTOR

The Australian chorus director joined Lyric full time in the 2012/13 Season, after having served as interim director the season before. He was named Head of

Music at Lyric, a new position, in the 2023/24 Season. Black was Chorus Director at Opera Australia in Sydney from 2001 to 2013, and has worked in this capacity for such distinguished organizations as the Edinburgh International Festival and Opera Holland Park (London), and, in Australia, the Sydney Symphony Orchestra, the Philharmonia Choir, Motet Choir, the Cantillation chamber choir, and the Melbourne Symphony Orchestra. In Chicago, Black became the first chorus director to work with the choruses of Lyric, the Chicago Symphony Orchestra, and the Grant Park Music Festival, where he served for six seasons, including preparation of *The Damnation of Faust* chorus and Haydn's *Creation*. Last summer, he worked with the Young Artists at Opera Australia and the apprentice singers at the Santa Fe Opera, and he has lectured or given masterclasses at the University of Chicago and Northwestern University. Black has served as chorus director for close to 140 different operas on four continents, and his work has been recorded and/or aired on ABC, BBC, PBS, for many HD productions in movie theaters, and on television. *Michael Black is supported by the Howard A. Stotler Chorus Director Endowed Chair.*



JOHN METZNER WIG & MAKEUP DESIGNER

The versatile designer first joined the staff of Lyric for the 2022/23 Season. He has previously collaborated with Chicago Shakespeare Theater, Lookingglass Theatre, and Court Theatre. He served for nine years as Head of Wig and Makeup for Webster University's Conservatory of Theatre Arts, and designed hair and makeup for more than 50 performances at The Repertory Theatre of St. Louis. Other regional credits include work at The Muny, Great River Shakespeare Festival, and Opera Theatre of Saint Louis, where he designed for *The Pirates of Penzance*, among many other productions. His advanced training includes wig styling at the Wig Room Training Academy and London School of Wig Making. *John Metzner is supported by The Marlys A. Beider Wigmaster and Makeup Designer Endowed Chair.*

Orchestra & Chorus

MUSIC DIRECTOR

Enrique Mazzola
*The John D. and Alexandra
 C. Nichols Endowed Chair*

MUSIC STAFF

Michael Banwarth
 Kseniia Polstiankina Barrad
 William C. Billingham
 Aaron Breid
 Kyle Dickson
 Levi Hammer
 Susan Miller Hult
 Tess Jackson
 Keun-A Lee
 Chi-Yuan Lin ^{^^}
 Noah Lindquist ^{*}
 Francesco Milioto
 Jerad Mosbey
 Jacob Niemann [^]
 Stefano Sarzani
 Madeline Slettedahl
 Morgan Stevenson
 Marika Yasuda

ORCHESTRA

Violin I

Robert Hanford, *Concertmaster,*
Mrs. R. Robert Funderburg
Endowed Chair
 Emily Nebel,
Assistant Concertmaster
 Eleanor Bartsch
 Alexander Belavsky
 Kathleen Brauer
 Renée-Paule Gauthier
 Laura Miller
 Liba Shacht
 Heather Wittels
 Bing Jing Yu

Violin II

Yin Shen, *Principal*
 John Macfarlane,
Assistant Principal
 Injoo Choi ^{**}
 Diane Duraffourg-Robinson
 Ann Palen
 Irene Radetzky
 John D. Robinson
 David Volfe

Viola

Carol Cook, *Principal*
 Terri Van Valkinburgh,
Assistant Principal
 Kunjing Dai ^{**}
 Amy Hess
 Melissa Trier Kirk
 Rebecca Swan

Cello

Calum Cook, *Principal*
 Mark Brandfonbrener
 William H. Cernota
 Ana Kim
 Walter Preucil

String Bass

Samuel Shuhan,
Acting Principal
 Andrew L. W. Anderson,
 Gregory Sarchet
 Collins R. Trier

Flute

Marie Tachouet, *Principal*
 Dionne Jackson,
Assistant Principal
 Alyce Johnson

Piccolo

Alyce Johnson

Oboe

Paul Lueders, *Principal*
 Judith Zunamon Lewis,
Assistant Principal

English Horn

Judith Zunamon Lewis

Clarinet

Heesoo Kim, *Principal*
 Susan Warner,
Assistant Principal

Bass Clarinet

Susan Warner,
Acting

Bassoon

Preman Tilson, *Principal*
 Lewis Kirk, *Assistant Principal*

Contrabassoon

Lewis Kirk

Horn

Abigail Black, *Principal*
 Fritz Foss, *Assistant*
Principal/Utility
*(Third Horn ^{**})*
 Robert E. Johnson ^{*}
 Samuel Hamzem
 Neil Kimel

Trumpet

William Denton, *Principal*
 Rebecca Oliverio,
Acting Assistant Principal

Trombone

Jeremy Moeller, *Principal*
 Mark Fisher, *Assistant Principal*
 Will Baker

Bass Trombone

Will Baker

Tuba

Andrew Smith, *Principal*

Timpani

Edward Harrison, *Principal*

Percussion

Douglas Waddell,
Acting Principal
 Eric Millstein,
Acting Assistant Principal

The Lyric Opera Orchestra string sections utilize revolving seating. Players behind the front desk change seats systematically and are listed alphabetically in the roster above.

^{*} On leave, 2025/26 Season

^{**} Season Substitute

[^] Solti Foundation U.S. Opera Residency

^{^^} Ryan Opera Center Conductor

Harp

Lynn Williams, *Principal*

Librarian

John Rosenkrans, *Principal*

Stage Band Contractor

Christine Janicki

EXTRA MUSICIANS

Josef Fischer, *viola*
 Wagner Campos, *clarinet*
 Jerad Mosbey, *fortepiano*

STAGEBAND MUSICIAN

Joel Cohen, *percussion*

CHORUS DIRECTOR AND HEAD OF MUSIC

Michael Black
The Howard A. Stotler
Endowed Chair

REGULAR CHORUS

Soprano

Angela De Venuto
Cathleen Dunn
Desirée Hassler
Rachael Holzhausen
Kimberly McCord
Heidi Spoor
Stephani Springer
Sherry Watkins
Kelsea Webb
Tara Wheeler

Mezzo-Soprano

Marianna Kulikova
Ola Rafalo
Yvette Smith
Marie Sokolova
Maia Surace
Corinne Wallace-Crane
Pamela Williams
Michelle K. Wright

Tenor

Geoffrey Agpalo
Timothy Bradley
Hoss Brock
William M. Combs
John J. Concepción
Kenneth Donovan
Jared V. Esguerra
Joseph A. Fosselman
Cullen Gandy
Cameo T. Humes
Tyler Samuel Lee
Joseph Shadday

Bass

David DuBois
Christopher Filipowicz
Robert Morrissey
Rafael W. Porto
Craig Springer
Nicholas Ward
Ronald Watkins
Nikolas Wenzel
Max Wier
Jonathan Wilson

CORE SUPPLEMENTARY CHORUS

Soprano

Cara Collins
Megan Fleischmann
Emily Mwila

Mezzo-Soprano

Christina G. Adams
Carla Janzen
Emily Price

Tenor

Joshua Benevento
Ace Gangoso

Bass

Michael Cavalieri
David Govertsen
Nicolai Janitzky
Ian R. Prichard

SUPPLEMENTARY CHORUS

Soprano

Nicole Besa
Alexandra Burch
Regina Ceragioli
Anna Donnelly
Elizabeth Fisher
Hayley Fox
Julia Frodyma
Elise Hurwitz
Mackenzie Jacquemin
Alexandra Kassouf
Courtney San Martin
Taylor See
Emlynn Shoemaker
Alannah Spencer
Diana Stoic
Ariana Strahl

Mezzo-Soprano

Emily Amesquita
Robin G. Bradley
Leah Dexter
Elizabeth Frey
Miya Higashiyama
Georgia Jacobson
Samantha McGonigal
Quinn Middleman
Sarah Ponder
Marissa Simmons

Tenor

Jerek Fernández
Klaus Georg
Jianghai Ho
Ernest C. Jackson Jr
Nathan Oakes
Steven Michael Patrick
Brett Potts
Brian Skoog
Ryan Townsend Strand
Tristan Tournaud

Bass

Evan Bravos
Chris DiMarco
Dimitri German
Stephen Hobe
Brian Hupp
Joseph Lodato
Dorian McCall
Wilbur Pauley
Douglas Peters
William Powell III
Dan Richardson
Aaron Wardell

With the generous support of individuals and organizations, Lyric is leading the advancement of opera in America — continually advancing artistic excellence, increasing relevance and reach for both traditional and new audiences, engaging our diverse communities through signature learning and exploration initiatives, and expanding our role as a cultural cornerstone in Chicago. You are our partners in this important shared enterprise — and we sincerely thank you.



Todd Rosenberg

Lyric

**Thank you for
your support**

Bravissimi

We gratefully acknowledge members of the Lyric family who have contributed a total of \$1 million+ throughout the history of the company. Lyric thrives due to the incredible generosity of these individuals, foundations, and corporations.

\$50,000,000+

The Facilities Fund of Lyric Opera of Chicago and Chicago Symphony Orchestra, John H. Bryan°, James W. Cozad°, H. Laurance Fuller°, and Patrick G. Ryan

\$30,000,000+

Nancy W. Knowles°

\$25,000,000+

Robert and Penelope Steiner Family Foundation

\$15,000,000+

Patrick G. & Shirley Welsh Ryan

\$10,000,000+

Anonymous
Julie & Roger Baskes
The Chicago Community Trust
The Crown Family
Sonia Florian°
J. Thomas Hurvis & Ann Andersen
and the Caerus Foundation
Elizabeth Morse Genius Charitable Trust
and the Elizabeth Morse Charitable Trust
National Endowment for the Arts
The Negaunee Foundation

\$7,500,000+

Anonymous (3)
Julius Frankel Foundation
Gramma Fisher Foundation of Marshalltown, Iowa
Mr.° & Mrs. Dietrich M. Gross
Illinois Arts Council
Martha J. Jacobshagen°
The Kiphart Family
John D.° & Alexandra C. Nichols
Anne and Chris Reyes
Lisbeth Stiffel

\$5,000,000+

Anonymous (2)
Abbott Fund
Ameritech/SBC/AT&T
Stefan Edlis° & Gael Neeson
The Grainger Foundation
ITW
Josef & Margot Lakonishok
John D. and Catherine T. MacArthur Foundation
The Andrew W. Mellon Foundation
The Monument Trust (UK)
Irma Parker°
Sidney L.° & Bettie Port°
Earl & Brenda Shapiro Foundation
Mr.° & Mrs. William C. Vance

\$2,500,000+

Anonymous (2)
American Airlines
Aon
Mrs. A. Watson Armour°
Boston Consulting Group
Randy L. & Melvin R.° Berlin
Henry & Gilda Buchbinder Family
Carolyn S. Bucksbaum°
The Butler Family Foundation
David W. Carpenter° & Orit K. Carpenter
Challenge III Fund - Government
City of Chicago Department of Cultural Affairs and Special Events
Nelson D. Cornelius°
Mr. & Mrs. John V. Crowe°
The Davee Foundation
Mrs. Mary B. Galvin
Mary Patricia Gannon°
Ann & Gordon Getty Foundation
Ethel & William° Gofen
Mr. & Mrs. William B. Graham°
Howard L. Gottlieb° & Barbara G. Greis
John R. Halligan Charitable Fund
The Harris Family Foundation
Invesco QQQ

The Edgar D. Jannotta Family
 Mr.° & Mrs. Fred A. Krehbiel
 Malott Family Foundation
 Mazza Foundation
 Fred McDougal° & Nancy Lauter McDougal°
 Robert & Susan Morrison
 Sylvia Neil & Daniel Fischel
 Northern Trust
 Mr. & Mrs. William A. Osborn
 Penny Pritzker & Bryan Traubert
 PwC
 Daniel F. & Ada L. Rice Foundation
 Dr. Scholl Foundation
 Clarke & Adine Stayman Trusts
 Howard A. Stotler°
 Mary Stowell
 Mrs. Herbert A. Vance°
 Cynthia Wood°
 Zell Family Foundation

\$1,000,000+

Anonymous (2)
 Katherine A. Abelson
 Paul M. Angell Family Foundation
 Atkinson Family Foundation
 Walter F. Bandi° & Elsa E. Bandi°
 Bank of America and Merrill
 Baxter International Inc.
 James N. & Laurie V. Bay
 Marlys A. Beider
 BMO
 The Brinson Foundation
 Bulley & Andrews
 Marion A. Cameron-Gray
 Amy & Paul Carbone
 JP Morgan Chase & Co.
 Elizabeth F. Cheney Foundation
 Mr.° & Mrs. James W. Cozad
 Joanne Toor Cummings°
 The Edgar Foster Daniels Foundation
 Deutsche Bank
 Azile Dick°
 Exelon
 Maxine P. & W. James Farrell
 Elaine Frank°
 Richard° & Barbara Franke
 Brena & Lee A. Freeman, Sr. Charitable Association
 Lloyd A. Fry Foundation
 Ambassador & Mrs. Ronald Jay Gidwitz
 Sue & Melvin Gray
 Harold Hartshorne, Jr.°
 Mr. & Mrs. Ben W. Heineman°

Walter E. Heller Foundation
 H. Earl & Miriam U. Hoover°
 Invenergy
 Jenner & Block
 George Johnson
 Lori Julian for the Julian Family Foundation
 Stephen A. Kaplan
 Kemper Educational & Charitable Fund
 Kirkland & Ellis Foundation
 Mr.° & Mrs. Sanfred Koltun
 Kraft Foods
 Karen Z. Gray-Krehbiel & John H. Krehbiel, Jr.
 LaSalle Bank
 Anne P. Lederer Research Institute
 Arthur B. Logan°
 Jim° & Kay Mabie
 Brooks & Hope McCormick Foundation
 Chauncey & Marion D. McCormick Family Foundation
 Robert R. McCormick Trust
 Gerry M. Miller°
 Jim° & Vicki Mills/Jon & Lois Mills
 Richard M. Morrow°
 Allan & Elaine Muchin
 Jerome & Elaine Nerenberg Foundation
 Susan & Nick Noyes/Make It Better Media Group
 Nuveen Investments
 Gregory O'Leary & Patricia Kenney
 David & Sheila Ormesher
 I.A. O'Shaughnessy Foundation
 Peer & Sarah Pedersen°
 Polk Bros. Foundation
 Prince Charitable Trusts
 Mrs. Jay A. Pritzker
 The Regenstein Foundation
 Lloyd E. Rigler-Lawrence E. Deutsch Foundation
 Harry A. Root, Jr.°
 Richard O. Ryan
 Arthur Rubloff Residuary Trust
 Sara Lee Foundation
 Carol & Gordon Segal
 Rose L. Shure° & Sidney N. Shure°
 Joanne Silver°
 Lois B. Siegel°
 Virginia Tobiasson
 Mr. & Mrs. J. W. Van Gorkom°
 The Wallace Foundation
 Lois L. Ward°
 Roberta L. Washlow & Robert J. Washlow
 Robert & Floretta Weiss
 Bernard E. Williams Trust
 Willkie Farr & Gallagher LLP

° Deceased

Production sponsors

Lyric's 2025/26 Season is presented by the **Robert and Penelope Steiner Family Foundation**.
Lyric Opera of Chicago's Chorus is generously sponsored by an **Anonymous Lead Sponsor**.

Medea

Lisbeth Stiffel
Julie & Roger Baskes
Marlys A. Beider
Patricia A. Kenney & Gregory J. O'Leary
Alice & John Butler⁺
H. Gael Neeson⁺
Sylvia Neil & Daniel Fischel⁺
Robert and Penelope Steiner Family Foundation⁺
Mary Stowell⁺
Zell Family Foundation⁺

Così fan tutte

The Negaunee Foundation
The Julius Frankel Foundation
Randy L. & Melvin R.° Berlin
Alice & John Butler⁺
H. Gael Neeson⁺
Sylvia Neil & Daniel Fischel⁺
Robert and Penelope Steiner Family Foundation⁺
Mary Stowell⁺
Zell Family Foundation⁺



Cavalleria rusticana & Pagliacci

Josef & Margot Lakonishok
Sonia Florian°
Alice & John Butler⁺
H. Gael Neeson⁺
Sylvia Neil & Daniel Fischel⁺
Robert and Penelope Steiner Family Foundation⁺
Mary Stowell⁺
Zell Family Foundation⁺

Madama Butterfly

Anonymous Donor
Lisbeth Stiffel
Randy L. & Melvin R.° Berlin
Marion A. Cameron-Gray



El último sueño de Frida y Diego

Zell Family Foundation
Pritzker Foundation
Ethel Gofen

Carmina Burana

Irene D. Pritzker in honor of Michael Black
Alice & John Butler⁺
H. Gael Neeson⁺
Sylvia Neil & Daniel Fischel⁺
Robert and Penelope Steiner Family Foundation⁺
Mary Stowell⁺
Zell Family Foundation⁺

safronia

Pritzker Traubert Foundation

A Night of Mellon Collie and Infinite Sadness



Salome

Richard O. Ryan

+ Enrique Circle

The Enrique Circle is composed of Lyric's most dedicated supporters who are committed to championing Maestro Enrique Mazzola's exciting artistic vision and legacy.

To learn more about Lyric sponsorship opportunities, please visit lyricopera.org/support-lyric/major-investments/production-sponsorships.

°Deceased

Lyric

Wine Auction 2026

A DIVINE DUET

May 8 & 9, 2026

HONORED GUESTS

*Pierre Lurton of
Château Cheval Blanc*

*Erwan Faiveley of
Domaine Joseph Faiveley*

Raise a glass to an unforgettable evening at the **Lyric Opera of Chicago Wine Auction** — one of the nation's premier wine events. Experience exquisite vintages, extraordinary cuisine, and thrilling auction moments in the stunning setting of the Lyric Opera House. Join fellow connoisseurs for an elegant night where passion for wine meets the power of the arts.

LYRICOPERA.ORG/WINEAUCTION

Lyric Wine Auction 2026 is a project of the Lyric Women's Board.
President, **Karen Z. Gray-Krehbiel**.
Wine Auction 2026 Co-Chairs, **Jenni Sorenson and John Holmes**.

ROBERT AND PENELOPE
STEINER FAMILY FOUNDATION
2025/26 Presenting Season Sponsor

 NORTHERN
TRUST
Presenting Sponsor



Photos: Kyle Flubacker, Jaclyn Simpson



Lyric
OPERA OF
CHICAGO

Spark inspiration.
Fuel creativity.
Light up the stage.

DONATE



Support Lyric Opera of Chicago
lyricopera.org/donatenow
312.827.3500

Photo: Todd Rosenberg/Lyric Opera of Chicago

Supporting our future — endowments at Lyric

Endowments provide a steady source of funding so Lyric can be a leader in the opera world — now and into the future.

LYRIC ENDOWED CHAIRS

Supports	Established by
Chorus Director	Howard A. Stotler
Concertmaster	Mrs. R. Robert Funderburg, <i>in honor of Sally Funderburg</i>
Costume Designer	Richard P. and Susan Kiphart
General Director	The Women's Board, <i>in loving memory of Ardis Krainik</i>
Lighting Director	Mary-Louise and James S. Aagaard, <i>in honor of Duane Schuler</i>
Music Director	John D. & Alexandra C. Nichols
Production and Technical Director ⁺	Allan and Elaine Muchin
Wigmaster and Makeup Designer ⁺	Marlys A. Beider, <i>in loving memory of Harold Beider</i>
Ryan Opera Center Director	The Ryan Opera Center Board
Ryan Opera Center Music Director	Jannotta Family

LYRIC PRODUCTION ENDOWMENT FUNDS

Supports	Established by
Baroque Operas	Anonymous
French Operas	W. James and Maxine P. Farrell
German Operas	Irma Parker
Italian Operas	NIB Foundation
Mozart Operas	Regenstein Foundation, <i>in honor of Ruth Regenstein</i>
Puccini Operas	Mary Patricia Gannon
Verdi Operas	Guild Board
Wagner Operas	Anonymous

LYRIC ENDOWMENT FUNDS

Sarah and A. Watson Armour III Endowment
Shirley and Benjamin Gould Endowment
John D. and Catherine T. MacArthur Endowment
Public Engagement Endowment Fund
Joanne Silver Endowment

DISCOVER LYRIC ENDOWMENT FUNDS

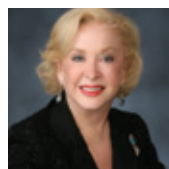
The Grainger Foundation, for the NEXT program
Bruce Gober MD and Donald Ratner Endowment Fund⁺

RYAN OPERA CENTER ENDOWMENT FUNDS

Dr. C. Bekerman Endowment⁺
Thomas Doran Endowment⁺
Boyd Edmonston & Edward Warro Endowment⁺
James K. Genden and Alma Koppedraijer Endowment⁺
Bruce Gober MD and Donald Ratner Endowment Fund⁺
H. Earl and Miriam U. Hoover Endowment Fund
J. Thomas Hurvis Endowment Fund,
in memory of Richard P. Kiphart
Robert and Ellen Marks Ryan Opera Center Vocal Studies Director
Endowment, *in memory of Gianna Rolandi*
Lois B. Siegel Endowment
Joanne Silver Endowment
Drs. Joan and Russ Zajchuk Endowment⁺

LYRIC UNLIMITED — LEARNING AND CIVIC ENGAGEMENT ENDOWMENT FUNDS

Katherine A. Abelson Education Endowment
Dr. C. Bekerman Endowment⁺
Raynette and Ned Boshell Endowment
George F. and Linda L. Brusky Youth Education Endowment⁺
The Chapters' Education Endowment, *in memory of Alfred Glasser*
James K. Genden and Alma Koppedraijer Endowment⁺
Bruce Gober MD and Donald Ratner Endowment Fund⁺



With major support provided from the Nancy W. Knowles Student and Family Performances Fund

During her lifetime, Carol Fox Award recipient Nancy Knowles generously invested her time, talents, and leadership to advance Lyric through her membership on the Board of Directors, Executive Committee, and the Guild Board. In recognition of her extraordinary gift to the Campaign for Excellence, Lyric named the Nancy W. Knowles Lobby in 2007. Later, Nancy made a significant gift in support of the Breaking New Ground Campaign, creating the Nancy W. Knowles Student and Family Performances Fund, which she secured by including Lyric as a beneficiary of her estate — a remarkable continuation of her lifetime generosity.

⁺**Future Planned Gift** These donors have named Lyric in their will, trust, IRA, or other planned giving possibilities to establish an endowment fund in their name to support Lyric, its programs, and positions forever. Learn how to leave a lasting legacy by contacting **Mike Biver**, Senior Director of Gift Planning, at **312.827.5655** or email **mbiver@lyricopera.org**.



For over 20 years, Lyric has given us some of our most meaningful memories. We've laughed, cried, and left performances deeply changed. Making a planned gift in our estate plans to secure Lyric's future is our way of giving back to the art form, and the city, that we love.

Ryan Elkmeier & Timothy Silver

Your legacy. The world will listen.

The Ardis Krainik Society

To learn more about leaving a lasting legacy at Lyric, please contact **Mike Biver**, Senior Director of Gift Planning
mbiver@lyricopera.org | 312.827.5655

Lyric



Gift planning at Lyric

Ardis Krainik Society at Lyric | This group consists of dedicated supporters who have designated a special gift through their will, trust, IRA, or other planned giving method to benefit Lyric into the future.

ARIA BENEFACTORS

Lyric would like to acknowledge the extraordinary philanthropy of the following individuals who have made significant legacy commitments of \$1,000,000 or more and who comprise the Ardis Benefactors of the Ardis Krainik Society.

Anonymous (6)
Paul and Mary Anderson
Family Foundation
Marlys A. Beider
Dr. C. Bekerman
Ann Blickensderfer
Marion A. Cameron-Gray
Christopher Carlo & Robert Chaney
David° & Orit Carpenter
Amanda & Matthew° Fox
David & Janet Fox
Patricia & Maurice J.° Frank
James K. Genden° &
Alma Koppedraier
Bruce Gober MD & Donald Ratner°
Sue & Melvin Gray
Dr. Petra B. Krauledat &
Dr. W. Peter Hansen
Susan K. Leshner
Philip G. Lumpkin
Blythe Jaski McGarvie
Susan & Robert Morrison
John Nigh
Julia Pernet
Kenneth Porrello & Sherry McFall
Richard O. Ryan
Diane Marie Tkach &
James F. Freundt
Virginia Tobiason
Dr. & Mrs. Peter Willson
Rabbi Larry Winer° &
JoAnne Johnson Winer
Dr. Robert G. Zadyak &
James C. Kemmerer
Drs. Russ & Joan Zajtchuk
Anne Zenzer

SOCIETY MEMBERS

Anonymous (141)
Rich & Jan Aaron
Valerie & Joseph Abel
Louise Abrahams
Richard Abram & Paul Chandler
Ginny Alberts-Johnson &
Lance Johnson
Carl H.° & Cynthia Albright

Judy L. Allen
Gary & Barbara Allie
Louise E. Anderson
Bert Badillo
Richard N. Bailey
David Gerard Baker
Susann Ball
Randolph & Lorraine Barba
Marilyn R. Barmash
Margaret Basch
Mr. & Mrs. Ron Beata
Mrs. Bill Beaton
Mark & Judy Bednar
Steve Beier
Martha Bell
Geraldine C. Bellanca
Daniel J. Bender
Lynn Bennett
Julie Anne Benson
Charles E. & Nancy T. Berg
Joan Israel Berger
Barbara Bermudez
Susan Bernstein
Kyle & Marge Bevers
Patrick J. Bitterman
M. J. Black & Mr. C. Lancy
Richard Blackwell
Dr. Debra Zahay Blatz
Merrill & Judy Blau
D. Jeffrey° & Joan H. Blumenthal
John & Claudia Boatright
Marlene R. Boncosky
Mr. & Mrs. John Jay Borland
Ned & Raynette Boshell
David Boyce
Dr. & Mrs. Boone Brackett
Christine & Paul Branstad
Family Foundation
Robert & Phyllis Brauer
Danolda (Dea) Brennan
Daniel A. & Leona B.° Bronstein
Carol & Alan Brookes
Kathryn Y. Brown
George F.° & Linda L. Brusky
Steven & Helen Buchanan
Dr. Gerald° & Mrs. Linda Budzik
Lisa Bury
John E. & Alice Butler
Robert J. Callahan
Julienne Campbell
Amy & Paul Carbone
James & Penny Carper
Carla Carstens & Theodore Herr
Patrick Vincent Casali
Dinah Jacobs Castle
Esther Charbit

Jeffrey K. Chase, J.D.
Ramona Choos
J. Salvatore L. Cianciolo
Heinke Clark
Robert & Margery Coen
Eugenia Collias
Elaine Collina
Peter & Beverly Conroy
Sharon Conway
Sarah J. Cooney
Dr. W. Gene Corley Family
Joseph E. Corrigan
Paul T. & Elaine D. Cottey
Una Creditor
David Curry
Barbara L. Dean
Phyllis Diamond
Roger & Linelle Dickinson
Ms. Janet E. Diehl
Mr. & Mrs. William S. Dillon
Catherine R. DiNapoli
Dr.° & Mrs. Bernard J. Dobroski
Thomas M. Dolan
Jane M. Drezen
Mary Louise Duhamel
Kathleen Dunn
Roma Krystyna Dybalski
Carol A. Eastman
Judy Eckberg
Boyd Edmonston & Edward Warro
Endowment Fund
Ryan Eikmeier & Timothy Silver
Cherelynn A. Elliott
Peter & Kelli° Emery
Mary Ellen Endow
Dr. James A. Eng
La & Philip Engel
Susanna & Helmut Epp
Erika E. Erich
Mr. & Mrs. James D. Ericson
Dr. & Mrs. James Ertle
Ms. Mary T. Ethier
Christopher & Brigitte Evans
Marilyn D. Ezri, M.D.
Dr. & Mrs. Paul Y. Feng
Nancy R. Fifield
Robert F. Finke
Felicia Finkelman
Jack M. & Marsha S. Firestone
Morris & Natalie Fisher
Eloise C. Foster
Jack B. Franaszek &
Kathleen A. McQueeny
Richard J. Franke
Ms. Susan Frankel
Thomas H. Franks, Ph.D.

Penny & John E. Freund
Marie & Gregory° Fugiel
George & Mary Ann Gardner
Scott P. George
Margaret & Patrick Ghielmetti
Melinda E. Gibson, MD, *in memory of Sylvia M. Morrison*
Norden S. Gilbert
John F. Gilmore
Michael Goldberger
John A. Goldstein
Sherry & Delmon Grapes
Rick Greenman
James R. Grimes
Gregor Gruenthaler
Ann Guhman
Carl J. Halperin
Mr. Edwin Hanlon
Miss Patricia O. Hanlon
Ms. Geraldine Haracz
Mary Kathryn Hartigan
Julian W. Harvey
Andrew Hatchell
William P. Hauworth
Dr. & Mrs. David J. Hayden
Mr. & Mrs. Thomas C. Heagy
Josephine E. Heindel
Allen W. Heinemann &
William Borden
Michael F. Hillbruner
Stephanie & Allen Hochfelder
Mrs. Marion Hoffman
Elizabeth Holding
Stephen D. Holmes
Edith A. Holst
Mary & Jim° Houston
H. Eileen Howard &
Marshall Weinberg°
Sarah & William Hufford
Kenneth N. Hughes
Michael Huskey
Cpt. Bernardo Iorgulescu, USMC
Memorial Fund
Merle Jacob
J. Jeffrey Jaglois
Edgar D. Jannotta
Stanley J. Janowiak
Dr. & Mrs. Todd & Peggy Janus
Barbara Joabson
Diane & Alan Johnson
John Arthur Johnson
Ronald B. Johnson
Roy A. & Sarah C. Johnson
Barbara Mair Jones
Mr. Theodore Kalogeresis
Wayne S. & Lenore M. Kaplan

For more information about becoming an Ardis Krainik Society member and the related levels and benefits associated, contact **Mike Biver**, Senior Director of Gift Planning, at **312.827.5655** or **mbiver@lyricopera.org**.

°Deceased

Susan D. Kay
Kenneth Kelling
Chuck & Kathy Killman
Diana Hunt King
Mary King
R. William Klein, Jr.
Laura & LeRoy Klemt
J. Peter Kline
Helen Kohr
Judith Kolata
Edward & Adrienne Kolb
Susan Kryl
Barbara A. Kummerer, *in memory*
of Thomas H. Kummerer
John C. & Carol Anderson Kunze
Axel Kunzmann & Bruce J. Nelson
Mary S. Kurz
Larry Lapidus
Barbara K. Larsen
Angela Larson &
Bamshad Mobasher
Thomas & Annelise Lawson
Henrietta Leary
Gloria & Donald LeBoyer
Dr. & Mrs. Andrew O. Lewicky
Pamela Forbes Lieberman
Mrs. Paul Lieberman

Carole F. Liebson
Carol L. Linne
Candace Broecker Loftus
Doris C. Lorz
Carolyn Lovering
Carlotta & Ronald Lucchesi
Dorette PS Luke
William & Terry Maher
James C. & Suzette M. Mahneke
Mr. & Mrs. Nicholas Malatesta
Ann Chassin Mallow
Jennifer J. Malpass
Dr. & Mrs. Karl Lee Manders
Allison R. Manley
Daniel T. Manoogian
Daniel F. Marselle
Judy Marth
Mrs. Elizabeth Upjohn Mason
Dr. Christine Winter Massie &
James Massie
Anna Mattson
Michael P. Mayer
Mr. & Mrs. Richard P. Mayer
Michael M. & Diane Mazurczak
Mrs. David McCandless
James G. & Laura G. McCormick
Gia & Paul McDermott

William F. McHugh
Bill McVey
Martina M. Mead
Mr. & Mrs. Leland V. Meader
Bill Melamed
Dr. & Mrs. Jack L. Melamed
Mr. & Mrs. Peter M. Mesrobian
Dr. & Mrs. Joseph Meyers
Regina Mezydlo
Pauline Michael
Margaret & Craig Milkint
Michael Miller & Sheila Naughten
Susan M. Miller
Mr. & Mrs. William A. Miller
Martha A. Mills
Vlasta A. "Vee" Minarich
David & Justine K. Mintzer
BettyAnn Mocek & Adam R. Walker
Robert & Lois Moeller
Dr. Virginia Saft Mond
Dr. Ann H. Montague
Drs. Bill & Elaine Moor
Allan & Elaine Muchin
Cherilyn G. Murer
Mr. & Mrs. Michael E. Murphy
Eileen N. Murray
Ms. Diana K. Myers

Tom Myles
David J. & Dolores D. Nelson
John H. Nelson
Edward & Gayla Nieminen
Zehava L. Noah
Renate P. Norum
Patricia A. Noska
Linda Moses Novak
Margo & Michael Oberman
Dr. & Mrs. Frederick Olson
Virginia O'Neill
David & Sheila Ormesher
Jonathan Orser
Gerald L. Padbury
Joan L. Pantsios
Robert W. Parsons, M.D.
George R. Paterson &
Allen J. Frantzen
Sunday & Charles Perry
Susanne P. Petersson
Shirley Pfennig
Genevieve M. Phelps
Karen & Dick Pigott
Robert M. Pine
Louis A. Pitschmann &
Lillian A. Clark
John J. W. Plampin

*Deceased



Explore Your Lyric

Sunday, April 26

A day of fun and
adventure for all ages.

lyricopera.org/explorelyric

ROBERT AND PENELOPE
STRIMER FAMILY FOUNDATION
2025/26 Presenting Season Sponsor

Lyric Opera of Chicago thanks its Official Airline, United Airlines,
and acknowledges support from the Illinois Arts Council.

Photo: Kyle Fluckiger

Drs. Alan° & Carol Pohl
 Ms. Lois Polakoff
 D. Elizabeth Price
 Nathaniel W. Pusey
 Dr. Sondra C. Rabin
 Stanley Ransom
 Roberta Lyn Anderson Rains
 Dorothy V. Ramm
 Linda Raschke
 Christina Rashid
 Mr. & Mrs. Keith A. Reed
 Kenneth Reid
 Michael & Susan "Holly" Reiter
 Jennie M. Righeimer
 Charles & Marilynn Rivkin
 Sylvie Romanowski
 James & Janet° Rosenbaum
 J. Kenneth & Susan T. Rosko
 Anthony & Chatka Ruggiero
 Joseph C. Russo
 Dennis Ryan
 Louise M. Ryssmann
 David Sachs
 Mary Ann Sadilek
 Suzanne & William° Samuels
 Mary Ann & Bob Savard
 Dr. & Mrs. Anthony J. Schaeffer
 Mary T. Schafer
 Mrs. Philip H. Schaff, Jr.
 Margaret Schermerhorn
 Douglas M. Schmidt
 Franklin Schmidt
 Martha P. Schneider
 Ms. Frances A. Schrader
 Dr. Itai Seggev
 Curt Shaffer° & Margaret Orbon
 Sandra Shane-DuBow
 Amy H. Shapiro, Ph.D.
 Sherie Coren Shapiro
 Charles Chris Shaw
 Mr. & Mrs. Gordon M. Shaw
 David Shayne
 Jared Shlaes
 Larry G. Simpson
 Dr. Ira Singer
 Margles Singleton
 Thomas G. Sinkovic
 Craig Sirls
 John A. Smetanka
 Dennis R. & Patricia M. Smith
 Norman & Mirella Smith
 Mr. Reeves E. Smith
 Joan M. Solbeck
 Mary Soleiman
 Philip & Sylvia° Spertus
 Ms. Gay K. Stanek
 James Staples
 Sherie B. Stein
 Michael Steinberg &
 Salme Harju Steinberg

J. Allyson Stern
 Lisbeth Cherniack Stiffel
 Mr. & Mrs.° James P. Stirling
 Carol A. Stitzer & Marshall Marcus
 Clara Basch Stone
 Dr. & Mrs.° Peter W. Stonebraker
 Mary Stowell
 Daniel & Norene Stucka
 Mr.° & Mrs. Glenn L. Stuffers
 Emily J. Su
 Sherwin A. Swartz
 Mr. Charles A. Tausche
 Mr.° & Mrs. John C. Telander
 Cheryl Lorelle Thaxton
 Carla M. Thorpe
 Karen Hletko Tiersky
 Myron Tiersky
 Jacqueline Tilles
 Mrs. William C. Tippens
 Paula Turner
 Robert & Gloria Turner
 Paul & Judith Tuszynski
 Cynthia Vahlkamp & Robert Kenyon
 Charitable Trust
 Mike & Mary Valeanu
 Marlene A. Van Skike
 Lorraine & Dave Vander Ark
 David J. Varnerin
 Nancy Johnson Vazzano
 Raita Vilnins
 Malcolm V. Vye, M.D.
 Albert Walavich
 Cheryl Walczak, M.D.
 Darcy Lynn Walker
 Gary T. Walther
 Stephen & Karen Walton
 Albert Wang
 Dan Ward
 Louella Krueger Ward
 Diane M. Weber
 Dr. Catherine L. Webb
 Karl Wechter
 Patricia M. Wees
 Eric Weimer
 Mr. & Mrs. Arnold Weinberg
 Joan & Marco° Weiss
 Joanna L. Weiss
 Mrs. Robert G. Weiss
 Mrs. Melville W. Wendell
 Sandra Wenner
 Jane B. White
 Roger D. Wilson
 Claudia Winkler
 Nora Winsberg
 Mr. David Winter
 Florence Winters
 Brien & Cathy Wloch
 Mr. & Mrs. Robert E. Wood II
 Daniel R. Zillmann

ESTATE GIFTS

The following estates have generously provided gifts of bequests and other planned gifts to Lyric. Due to space limitations, listings include only planned gifts received in the past three years and is current as of August 8, 2025. With deepest regards, Lyric commemorates and remembers those departed Lyric patrons who have honored us with these most-profound commitments.

James S. & Mary-Louise Aagaard
 Carol A. Abrioux
 Judith Anderson
 Ross C. Anderson
 Mychal P. Angelos
 Catherine Aranyi
 L. Robert Artoe
 Dorothy Avedisian
 Dr. Michael O. Blackstone
 Dr. Gregory L. Boshart &
 Dr. William R. Lawrence
 Judy Bober
 Joan Brugger
 Dr. Mary Louise Hirsh Burger &
 Mr. William Burger
 John F. Byrd
 Irma M. Caprioli
 David Carpenter
 Henry J. Carson
 Charles Putnam Case
 Ellen Clasen
 James Compton
 Louise H. Curry
 Hope A. Curtis
 Azile Dick
 Roger F. Dickinson
 Thomas Doran
 Richard Eastline
 Barbara Faber
 Roy Fisher
 Rhoda & Henry Frank
 Mary Patricia Gannon
 Sheila Purcell Garcia
 John F. Gilmore
 Howard Gottlieb
 John R. Grimes
 Dorothea Gruenerwald
 Carolyn Hallman
 Marilyn & Thomas Heath
 Mary Elizabeth Mako Helbert
 Rebecca Jarabak
 Judy Jasper
 Janet Jones
 Dr. Anne Juhasz
 Jack Kanuk & Richard Foster

Kerma & John Karoly
 Neil King
 Nancy W. Knowles
 David F. Kunca
 Gerald Lee
 Nancy R. Levi
 Melvin Loeb
 Hugo Lorenz
 David & Bernadette Lowum
 Edward Mack
 Iris Maiter
 Nicholas & Joan Malatesta
 Bella G. Malis
 Mrs. John Jay Markham
 Robert Marks
 Nancy Lauter McDougal &
 Alfred L. McDougal
 Dr. Jack Melamed
 Susan Messinger
 Barbara Terman Michaels
 Gerry M. Miller
 Barbara Mills
 Mario Munoz &
 Julia Garrofe Munoz
 Rosemary Murgas
 Florence C. Norstrom
 John & Dawn Palmer
 Dr. Frances Pietch
 Mary Raffetto-Robins
 Mary Lee Reed
 Evelyn R. Richer
 Carol Roberts
 Jadwiga Roguska-Kyts, M.D.,
in memory of Robert Kyts
 Eugene Rzym, *in memory of*
Adaline Rzym
 Richard P. Schieler
 Caroline Seabright
 Donald Seibert
 Lois B. Siegel
 Joanne Silver
 Jeremiah Stamler
 Suzanne & Karl Stein
 Loretta Thurm
 David Thurn
 Maureen Tokar
 Mr. & Mrs. J. W. Van Gorkom
 Joseph & Elizabeth Walczak
 Barbara Wanke
 Marilee Wehman
 Claude M. Weil
 Mary S. Wenzel
 Caroline Wheeler
 Bonnie Zeitlin

For more information about becoming an Ardis Krainik Society member and the related levels and benefits associated, contact **Mike Biver**, Senior Director of Gift Planning, at **312.827.5655** or **mbiver@lyricopera.org**.

°Deceased

Corporate partnership

Lyric appreciates the generosity of its corporate partners.

\$1,000,000 & above



\$50,000 to \$74,999



\$500,000 to \$999,999



KIRKLAND & ELLIS



\$25,000 to \$49,999

\$250,000 to \$499,999



\$100,000 to \$249,999



JENNER & BLOCK LLP



TIFFANY & CO.

\$75,000 to \$99,999



**DISTINGUISHED
PATRON****\$10,000 to \$14,999**

Amsted Industries Foundation
Henry Crown and Company
Mayer Brown LLP
State Street Global Advisors

PATRON**\$5,000 to \$9,999**

Baird Foundation, Inc.
Italian Village Restaurants

PARTNER**\$4,000 to \$4,999**

Howard & Howard Attorneys
PLLC
Sahara Enterprises, Inc.

DEVOTEE**\$3,000 to \$3,999**

American Agricultural
Insurance Company
O. Long Law, LLC

MATCHING GIFTS

Abbvie
Bulley & Andrews
Goldman Sachs
Google
IBM Corporation
ITW Foundation
Invenergy
John D. & Catherine T.
MacArthur Foundation
JPMorgan Chase Foundation
Kirkland & Ellis Foundation
Microsoft
PepsiCo Foundation
The Pledgeling Foundation
PNC Foundation
Polk Bros. Foundation
United Way Metro Chicago
US Bank

IN-KIND GIFTS

J&L Catering
Harolyn Blackwell
Gene & Georgetti's
HMS Media
Rosalie Mizner
Brendan and Suzanne
Mulshine
PRP Wine International
Sailbrite Midwest
Shure Incorporated
Tablescapes
United Airlines
Frances Wehrli

Lyric Opera of Chicago
acknowledges support from
the Illinois Arts Council.

Lyric Opera of Chicago is a
member of OPERA America.

To learn more about corporate partnership opportunities, please contact **Bryan Hulscher**,
Senior Philanthropy Officer, Institutional Partnerships at bhulscher@lyricopera.org or **312.827.5692**.

This list includes donors whose gifts or pledges were received by December 8, 2025.

Capital gifts

Lyric is deeply grateful to the following donors for recent capital pledges and gifts that enhance the patron experience, maintain the beauty of our landmark opera house, and enable the magic on our stage.

Irma Parker Estate

Elevator renovation project through
the Capital Improvement Initiative Fund

An Anonymous Donor

Theatre seat renovation through
the Patron Accessibility Initiative

Jack & Peggy Crowe

Glass curtain project for enhanced
climate control for patron comfort
through the Capital Improvement
Initiative Fund

Aria Society

Lyric recognizes and appreciates gifts made by generous individuals, foundations, and government organizations.

\$1,000,000 and above

**AN ANONYMOUS
DONOR**



The Crown Family
Lester & Renée Crown



Howard L. Gottlieb &
Barbara G. Greis

**THE NEGAUNEE
FOUNDATION**

**PENNY PRITZKER &
BRYAN TRAUBERT**



Robert and Penelope Steiner
Family Foundation

\$500,000 to \$999,999

**AN ANONYMOUS
DONOR**



The Butler Family Foundation
John & Alice Butler



H. Gael Neeson



Sylvia Neil & Daniel Fischel



Patrick G. & Shirley Welsh Ryan



Lisbeth Stiffel



Mary Stowell



Zell Family Foundation

\$250,000 to \$499,999**ANONYMOUS
DONORS (2)**

Julie & Roger Baskes



Randy L. & Melvin R.° Berlin

David W. Carpenter° and Orit K.
Carpenter, *in loving memory*
of David W. Carpenter

Julius Frankel Foundation

Erika Gross *in loving*
memory of Dietrich GrossJohn R. Halligan
Charitable Fund

Josef & Margot Lakonishok



Richard O. Ryan

“

I've supported Lyric for over 40 years because to me it's important to stand behind any artistic endeavor that's significant in my life. Opera on stage needs to survive. It's not a given that it can or will.”

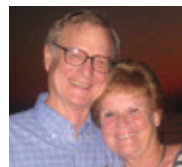
Stephen F.

° Deceased

\$100,000 to \$249,999

**ANONYMOUS
DONORS (4)**

**PAUL M. ANGELL
FAMILY FOUNDATION**



Atkinson Family Foundation
*Dr. Arthur J. Atkinson, Jr.°
& Mary Jo Atkinson*

**THE BEAUBIEN
FAMILY**



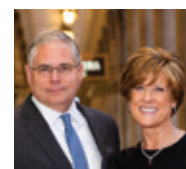
Marlys A. Beider



Mr. & Mrs. Allan Bulley, III



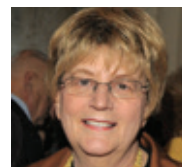
Marion A. Cameron-Gray



Amy & Paul Carbone



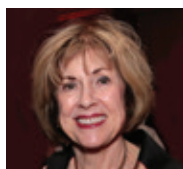
**GRAMMA FISHER
FOUNDATION OF
MARSHALLTOWN,
IOWA**



Sonia Florian°

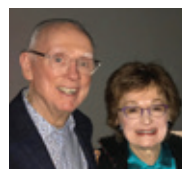


Rhoda and Henry Frank
Family Foundation

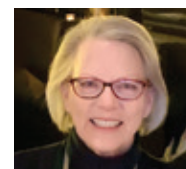


Ethel Gofen

**THE GRAINGER
FOUNDATION**



James & Brenda Grusecki



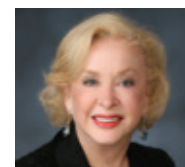
Lori Julian for the Julian
Family Foundation



Stephen A. Kaplan

**MIKE & LINDY
KEISER**

**THE RICHARD P.°
& SUSAN KIPHART
FAMILY**



The Knowles Foundation
Nancy W. Knowles°

\$100,000 to \$249,999 Continued

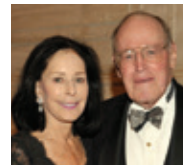


Karen Z. Gray-Krehbiel &
John H. Krehbiel, Jr.



Philip G. Lumpkin

**JEANNE RANDALL
MALKIN FAMILY
FOUNDATION**



John D.° & Alexandra
C. Nichols



Patricia A. Kenney &
Gregory J. O'Leary



Margo & Michael Oberman
& Family

**THE C. G. PINNELL
FAMILY**

IRENE D. PRITZKER

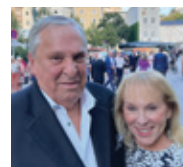


Dr. Scholl Foundation
Jack & Catherine Scholl°

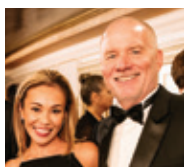


Nancy S. Searle

**SEGAL FAMILY
FOUNDATION**



Morris Silverman &
Lori Komisar



Mark Tatro & Margarita
Chavez Tatro

**THIERER FAMILY
FOUNDATION**

Donna Van Eekeren
Foundation



Roberta L. Washlow &
Robert J. Washlow



°Deceased

Annual individual and foundation support

VIRTUOSO CIRCLE BENEFACTOR **\$75,000 to \$99,999**

David Q. & Mary H. Bell
Ross° & Patricia D. Bender
Linda Bruske
The Chicago Community Trust
Eisen Family Foundation
The Guild Board
Dr. Katherine Knight
Mazza Foundation
Patricia Frank
Blythe Jaski McGarvie
Allan & Elaine Muchin
Jerome & Elaine Nerenberg
Foundation
Susan M. Ruder
Bill & Orli Staley Foundation
Gene & Jean Stark
Virginia Tobiason
Anne Zenzer &
Dominick DeLuca

MAESTRO CIRCLE BENEFACTOR **\$50,000 to \$74,999**

Anonymous Donors (2)
The Brinson Foundation
Pamela Crutchfield
Decyk Watts Charitable
Foundation
Hau Chyi
Nancy Dehmlow
James & Deborah Fellowes
Amanda C. Fox
Virginia & Gary Gerst
The Joyce Foundation
Rebecca & Lester Knight
Marie & Arch McKellar
Frank B. Modruson &
Lynne C. Shigley
Brendan & Suzanne Mulshine
Mr. & Mrs. William A. Osborn
Polk Bros. Foundation
Mr. & Mrs. Scott Santi
Peter Scheuermann
Barbara & Barre Seid
Foundation
Earl & Brenda Shapiro
Foundation
Ilene & Michael Shaw
Charitable Trust
Rose L. Shure &
Sidney N. Shure

Ms. Gay K. Stanek
Michael Steinberg &
Salme Harju Steinberg
Gregory Tabaczynski
Cynthia Vahlkamp &
Robert Kenyon

COMPOSER CIRCLE **BENEFACTOR**

\$35,000 to \$49,999
Ken & Amy Aldridge
Molly & Roman Boed
Donald & Anne Edwards
Lloyd A. Fry Foundation
James° & Mary Houston
Mr. & Mrs. Charles K. Huebner
Annie & Gregory K. Jones
Mr. & Mrs. L. D. Jorndt
Mr. & Mrs. Neil T. Kawashima
Mark & Gale Kozloff
Mr. Craig Lancaster &
Ms. Charlene T. Handler
Julian Oettinger
Dr. Ross Slotten &
Ted A. Grady

ARTIST CIRCLE **BENEFACTOR**

\$25,000 to \$34,999
Anonymous Donors (4)
Paul° & Mary Anderson
Robert & Isabelle Bass
Foundation, Inc.
Ron & Peggy Beata
Diane° & Michael Beemer
Fred & Phoebe Boelter
Heidi Heutel Bohn
Buehler Family Foundation
Pamella Capitanini
Greg & Mamie Case
Cellmer/Neal Foundation Fund
Joyce E. Chelberg
Mr. & Mrs. Michael P. Cole
Arie & Ida Crown Memorial
Michael Cushing
Anne Megan Davis
Ann M. Drake
Mr. Charles Droege &
Ms. Julie A. Wroblewski
Stephen Dunbar
Drs. George Dunea & Sally
Metzler-Dunea

Elaine S. Frank Fund
David & Janet Fox
Dr. Jana L. French &
Mr. Peter Gotsch
Mira Frohnmayer &
Sandra Sweet
Gary & Denise Gardner
John & Sarah Garvey
Mary & Lionel Go
Sue & Melvin Gray
Maria C. Green &
Oswald G. Lewis
Dan & Caroline Grossman
Mary Ellen Hennessy
Greater Cedar Rapids
Community Foundation,
Joseph M. Kacena Endowed
Fund
MaryBeth Kretz &
Robert Baum
Mr. & Mrs. Jonathan B. Lewis, Sr.
Jennifer Malpass
Robert & Evelyn McCullen
Susan M. Miller
Music Performance Trust Fund
& Film Funds Trust Fund
Nicholas & Susan Noyes
Martha C. Nussbaum
Mr. & Mrs. Lee Oberlander
Drs. Olufunmilayo &
Christopher Olopade
Sheila & David Ormesher
Karen Pettite
D. Elizabeth Price
Alyssa & Burke Raine
Betsy & Andy Rosenfield
Bonnie R. Ross
George Sargent
Marsha Serlin & Jerry Sloan
Charles & M. R. Shapiro
Foundation, Inc.
Richard W. Shepro &
Lindsay E. Roberts
Jennifer L. Stone
Arthur Susman & Carole Stone
Cherryl T. Thomas
Mr. & Mrs. Richard G. Weinberg
Kim° & Miles D. White
Dr. David H. Whitney &
Dr. Juliana Chyu
Drs. Joan & Russ Zajtchuk

PREMIER PATRON **\$15,000 to \$24,999**

Anonymous Donors (3)
Judith Barnard & Michael Fain
C. Bekerman, M.D.
Mr. & Mrs. Merrill E. Blau
Mr. & Mrs. John Jay Borland
Drs. Walter & Anne-Marie
Bruyninckx
Rosemarie & Dean L. Buntrock
Cabrera Capital
Lawrence & Barbara Cohan
Mr. & Ms. Douglas Cohen
Ann Coleman
Susan E. Cremin & Paul Dykstra
Dan Draper
Fred L. Drucker & Hon. Rhoda
Sweeney Drucker
Richard & Ingrid Dubberke
Erika Erich
Lafayette J. Ford
Ruth Ann M. Gillis &
Michael J. McGuinnis
Phillip & Norma Gordon
Judith & Mark Hibbard
Cynthia° & Ron Holmberg
Dr. Nora Jaskowiak &
Mr. Matthew Hinerfield
The Jentes Family Foundation
George Johnson
Ronald B. Johnson
Robert & Emily King
Stephen Kohl & Mark Tilton
Victoria Mitchell Kohn
Helen & Bernard Kozloff
Family Foundation
Dr. M.S.W. Lee
Mr. & Mrs. Lawrence Mages
Malott Family Foundation
Mr. David Marshall &
Dr. Maija Freimanis
Gerard & Kathleen Maynard
Jean McLaren & John Nitschke
Terry J. Medhurst
Sheila Medvin
Mary Lou & Jack Miller
Martha A. Mills
Ms. Cherilyn G. Murer
Chris & Eileen Murphy
Phyllis Neiman
Mr. & Mrs. Brian &
Tammi O'Dea

Marian Phelps Pawlick
Bonnie Pritchard
Hon. S. Louis Rathje &
Maria Rosa Costanzo
Mr. & Mrs. William Revelle
Candy & Gary Ridgway
The George L. Shields
Foundation, Inc.
Louis & Nellie Sieg Fund
Adele Simmons
Craig Sirles
Dr. & Mrs. R. John Solaro
Dr. Cynthia V. Stauffacher
Mr. & Mrs. James M. Trapp
Aris Urbanes & William Hulsker
Alan & Harriet Weinstein
Hilary & Barry Weinstein
Family Foundation
Michael Welsh &
Linda Brummer
Dr. & Mrs. Peter Willson
Mr. & Mrs. Robert E. Wood II
Marsha & David Woodhouse

DISTINGUISHED PATRON
\$10,000 to \$14,999

Anonymous Donors (11)
Alexander & Alexander,
Attorneys at Law
Arnold & Helen Andersen
Mr. & Mrs. Daniel P. Arras
Peter & Lucy^o Ascoli
Family Fund
Paul & Robert Barker
Foundation
Queta Rodriguez Bauer &
Ron Bauer
Jonathan Becker
Mark & Judy Bednar
Brunnhilde K. Bell Family
Barbara Bermudez
Mr. & Mrs. Turney P. Berry
Patrick J. Bitterman
Dr. & Mrs. Mark Bowen
Helen Brach Foundation
Dr.^o & Mrs. Thomas A. Broadie
Marie Campbell
Thomas A. Clancy &
Dana I. Green
Mitchell Cobey & Janet Reali
Lawrence Corry
Vinay Couto & Lynn Vincent
Gary Crosby
Elaine K. Cue
Cate & Jim Denny
Shawn M. Donnelley &
Christopher M. Kelly
Nancy & Bernard Dunkel
Mr. Paul Earle &
Ms. Ellen Rudnick
Hon. Frank Easterbrook &
Mrs. B. Englert Easterbrook
Chaz & Robert^o Ebert

Richard Egen
Ambassador Rahm Emanuel &
Ms. Amy Rule
Susanna & Helmut Epp
Dr. James O. Ertle
Mary & Steve Etherington
Marilyn D. Ezri, M.D.
Stephen and Rosamund
Forrest Family Foundation
Mr. Steven L. Fradkin
Dr. & Mrs. James L. Franklin
Cindy & Christopher B. Galvin
Ambassador & Mrs. Ronald J.
Gidwitz
Gay L. Girolami
Bruce Gober, MD
Judy & Bill Goldberg
Helyn D. Goldenberg
Mr. Gerald & Dr. Colette Gordon
Chester A. Gougis &
Shelley Ochab
David & Elizabeth Graham
James R. Grimes
Joan M. Hall
Dr. James^o & Mrs. Susan
Hannigan
John Hart & Carol Prins
Lynn Hauser & Neil Ross
Mrs. O. J. Heestand, Jr.
Hinsdale Chapter
Anne P. Hokin
Michael & Leigh Huston
Capt. Bernardo Iorgulescu,
USMC Memorial Fund
Dr. Carolyn & Dr. Paul Jarvis
Jessen Family in memory
of Howard E. Jessen &
Susanne C. Jessen
Nancy Rita Kaz
Mr. & Mrs. LeRoy C. Klemt
Edward & Adrienne Kolb
Margaret & Eugene^o Kuhajek
Virginia Croskery Lauridsen &
Nix Lauridsen
Lavin Family Foundation
Lemont Fund
Michael A. Leppen
Dr. Zafra Lerman
Mrs. Paul Lieberman
Anne & Craig Linn
Mr. & Mrs. Robert S. & Sandra
E. Marjan
Laura & Craig Martin
Shari Mayes
Mr. & Mrs. James A. McClung
Judith W. McCue &
Howard M. McCue III
Lynne & Paul McDonough
Drs. Bill^o & Elaine Moor
Michael & Kimberly Moran
Linda K. & Dennis M. Myers
Mr. & Mrs. David W. Nelms

Arthur C. Nielsen, Jr. Family
Charitable Trust
John Nigh
Anna Paglia
Cindy Pan & Eric Easterberg
Betsy Pasquinelli
Mr. & Mrs. Bruno Pasquinelli
Mr. & Mrs. Greg Pearlman
Jean Perkins & Leland
Hutchinson
The Family of Seymour H.
Persky
Mr. Jeffry Pickus &
Ms. Mary C. Downie
Harvey & Madeleine Plonsker
Rosy & Jose Luis Prado
Andra & Irwin Press
Mrs. Diana Prince
Jennifer N. Pritzker
Susan Rabe
The Reid-Anderson Family
Dr. Petra & Mr. Randy O.
Rissman
John C. Robak
Carol Roberts



Supporting Lyric is one way I can honor
my father's memory and express my
appreciation for the doors that were
opened for me."

Robert L.

Linda Samuelson &
Joel Howell
George^o & Terry Rose Saunders
Mr. & Mrs. Michael T. Sawyier
Karla Scherer
Alan Schriesheim &
Kay Torshen
Susan H. Schwartz
Richard & Diana Senior
Surendra & Dorothea Shah
Mary Beth Shea
Elizabeth S. Sheppard
Mr. & Mrs. Alejandro Silva
Ilene Simmons
Larry G. Simpson
The Siragusa Family Foundation
Steven R. Smythe
Joan M. Solbeck
The Solti Foundation U.S.
Mr. & Mrs. Harvey Struthers
MinSook Suh
Dr. & Mrs. Arnold Tatar
Mark & Andrea Taylor
James & Sara TenBroek

Angela Tenta, M.D.
Mrs. Carla M. Thorpe
Dr. Michael Tobin, MD
Robert L. Turner
Bill & Kathryn Tyree
Mr.^o & Mrs. Peter Van Nice
Scott D. Vandermyde
Frances & Peter^o Vandervoort
David J. Varnerin
Dan & Patty Walsh
Pam & David Waud
Jason Wortendyke &
Ariel Knowles
Debbie K. Wright

PATRON

\$5,000 to \$9,999

Anonymous Donors (11)
Mr. & Mrs. William Adams IV
Mr. & Mrs. Gary R. Allie
Mr. & Mrs. Richard Arons
Margaret Atherton &
Robert Schwarz
Robert Baughman
Jennie Huang Bennett

Mr. & Mrs. D. Theodore
Berghorst
Kathleen Betterman
Mrs. Petra Blix &
Dr. Ben Gruber
Mr. Philip Block IV &
Mrs. Margaret S. Block
Susan Bowey
Michael Boykins &
Charise Studesville
Mr. & Mrs. James Bramsen
Danolda (Dea) Brennan
John M. Byrne
Ray Capitanini^o
Chapters' Executive Board
Mrs. Warren M. Choos
Karen Clausen
Elaine Collina
Jane B. Colman
Dr. Peter & Beverly Ann Conroy
Lynd W. Corley
Francesca Cornelli
Ron Cortina

^oDeceased

Marsha Cruzan &
Tom McGinnis
Gerry & Randee Curciarello
The Dancing Skies Foundation
Dr.° & Mrs. Tapas K. Das Gupta
Frank Davis
Laura Deflice
Charlie & Bobbie Denison
Harry° & Marianne Dennis
Dr. & Mrs. Anthony
DiGianfilippo
Cherelynn A. Elliott
Deane Ellis
Suja Finnerty
Marvin Fletcher
Arthur L. Frank
Don° & Abby Funk
Carl A. & Fern B. Gaensslen
Charitable Giving Fund
James K. Genden° &
Alma Koppedraijer
Michael Goldberger
Annemarie H. Gramm



Each time I am at Lyric, I'm transported to
another time and place. I leave with my
heart and soul filled with joy and awe."

Henry M.

Mr. & Mrs. Delmon Grapes
Mr.° & Mrs. Richard Gray
Greene Family Foundation
Richard Greenman
Mrs. Ginger Griffin &
Mr. Hollis Griffin
The Blanny A. Hagenah
Family Fund
Mrs. John M. Hartigan
Mr. & Mrs. Julian W. Harvey
Dr. David J. & Nancy K. Hayden
Dr. Allen W. Heinemann &
Dr. William Borden
Dr. & Mrs. Arthur L. Herbst
Elizabeth & Mark Hurley
Regina Janes
Sarah & Kip Kelley II
Mr. & Mrs. Robert E. King
Marian Kinney
Ms. Sheila Kirscher &
Mr. John Kirscher
Thomas A. Kmetko &
Rafael Leon
Dr. & Mrs. Sung-Tao Ko
Tod Kovara
Eldon & Patricia° Kreider
Dr. & Mrs. Ken N. Kuo
Jeanne LaDuke & Carol Stukey

Peter N. Lagges, Jr.
Richard Lim
Carlotta L. & Ronald L. Lucchesi
Jim° & Kay Mabie
John & Regina Mangum
David J. Martin & Hungchai Su
Donald Maves
Mr. & Mrs. Richard P. Mayer
John & Etta McKenna
Phoebe S. McMillan
Dorri & James McWhorter
Dhun Mehta
Bill Melamed & Jamey Lundblad
Helen Melchior
Dr. Walter S. Melion &
Dr. John M. Clum
Ms. Britt M. Miller
David E. Miller
Mr. & Mrs. Charles Moore
Helen Morrison &
John McNally
Drs. Robert° & Marsha Mrtek
Near North Chapter

Walter & Caroline Sueske
Charitable Trust
Ms. Robin Loewenberg Tebbe
& Mr. Mark Tebbe
William & Debra Terlato
Mrs. Theodore D. Ticken
Diane Tkach & James Freundt
Phil° & Paula Turner
Mrs. Henry Underwood
Albert R. Walavich
Audrey Weaver
Dr. Catherine L. Webb
Marcia Welcome
Howard S. White
Mr. & Mrs. Brien Wloch
Mark & Randi Woodworth
Mr. & Mrs. Michael Woolever
Nancy Wulfers
Kirk Wyatt
Owen & Linda Youngman

PARTNER

\$4,000 to \$4,999

Ms. Joanne B. Brooks
Mrs. Carol Brusslan
Cathleen Cameron
Lynne & Fairbank° Carpenter
Hon. Barbara Flynn Currie
Shelly Dimeglio
Faith & Frank Dusek
Jared Fritz-McCarty
Dr. Robin Lee Gallardi
Merle Jacob
Dr. & Mrs. Todd & Peggy Janus
Judith L. Kaufman
Ms. Marian Klaus
Thomas Kuczwar
Thomas Kusnetzky
Lake Geneva Chapter
Mrs. Diane L. Macewicz
John H. Nelson
Dr. & Mrs. Alan Pohl
James A. Staples
Mr. O. Thomas Thomas &
Mrs. Sandra Inara Thomas
Todd & Cari Viereg
F. C. Winters

DEVOTEE

\$3,000 to \$3,999

Anonymous Donors (3)
Mr. & Mrs. Richard Aaron
Nicole Aiken-Shaban
Evelyn Alter
Dr. & Mrs. Robert Arensman
Ms. Maribeth Babler
Sandra M. Bass
Robert & Janice Bastian
John & Claudia Boatright
Mr. Thaddeus M. Bond, Sr
Giovanna & Joseph Breu
Ms. Kathryn Y. Brown

Christopher Carlo &
Robert Chaney
Stephen H. Carr &
Virginia McMillan Carr
Heinke K. Clark
Ms. Vindya Dayananda
Ms. Sarah Demet
Bernard J.° & Sally Dobroski
Thomas & Jean Evans
Elizabeth & Jim° Fanuzzi
Gregory A. Ferro
Firestone Family Foundation
Mr. & Mrs. Lewis Flint
Ms. Irene M. Fox
Patricia H. Gates
Robert Gienko, Jr.
Dr. Paul B. Glickman
Mr. & Mrs. Stanford Goldblatt
Mary E. Hallman
Mr. & Mrs. M. Hill Hammock
Theodore Herr &
Carla Carstens Herr
Stephen D. Holmes
Thomas J. Hudak
John G. & Betty C. Jacobs
Stephen Kraft
Catherine Kranz
Marc & Franziska Lacher
Phillip Lehrman
Patricia Forbes Lieberman
Diana Guarin Londono
Sherry & Mel Lopata
James McClain
Martina M. Mead &
Michael T. Gorey
Claretta Meier
Dr. Frederick K. Merkel
Mr. & Mrs. Craig R. Milkint
Mr. & Mrs. William A. Miller
Thomas E. Mulvihill
Robert Nicholson
Carol M. Nigro
Mr. & Mrs. Bruce L. Ottley
George R. Paterson &
Allen J. Frantzen
Philip Pierce
Edward & Leah Reicin
Eve Reppen Rogers
Alicia Reyes & Rathin Datta°
Victoria Ricks
Jerry & Carole Ringer
Mr.° & Mrs. Ronald A. Rolighed
Kemp Ross
Chatka & Anthony Ruggiero
Dr. Cynthia J. Sanders
Mary T. Schafer
Valentine & Blagovesta Seng
Sherie Shapiro
Tracy Singer
S. & Anda Sokalski
Carol D. Stein &
James S. Sterling

Catherine Stewart &
Geoffrey Smith
Mrs. Ralph[°] W. Stoll
Geraldine L. Szymanski
Anne Taft
Mr. & Mrs. Nathan Tarcov
Oscar Tatosian, Jr.
Kathryn Voland-Mann &
Robert Mann
Joseph & Elizabeth Wallner
Caroline Rothstein Wendt
G. Marc & Tracy S. Whitehead
Claudia Winkler

ADVOCATE**\$2,000 to \$2,999**

Anonymous Donors (3)
Giustino Albanese
Ginny Alberts-Johnson &
Lance Johnson
Dr.[°] & Mrs. Carl H. Albright
Laura Levy & Ulf Anvin
Norma Armon
Mr. Brett & Dr. Carey August
Ms. & Mr. Rana & Albert Baladi
Mr. & Mrs. Robert D. Baldwin
Barrington & Northwest
Suburban Chapter
Barbara Barzansky
Patricia Bayerlein &
Michael Hoffman
Mrs. Arthur Billings
Mrs. John R. Blair
Dr. Debra Zahay Blatz
Ann Blickensderfer
Mr. & Mrs. Albert H. Bloom
Mr. & Mrs. Daniel L. Blumen
Dr. H. Constance Bonbreast
Jennifer E. Boyd
Richard Boyum & Louie Chua
Mr. Donald Clark
Jean M. Cocozza
Mrs. Christina Collins
Stevie Conlon & Sue Skau
Cecelia Conrad &
Llewellyn Miller
Jason Dantico
Mr. & Mrs. Stephen Diamond
Sara Dix
Kathy Dunn
Dr. Deirdre Dupre &
Dr. Robert Golub
V. Dvonch
Mrs. Emilie E. Egan
Jon Ekdahl & Marcia Opp
George Engeln &
Denise Stewart
Mark Fitzgerald &
Lynne Corbett Fitzgerald[°]
Ms. Karen E. Flanagan
Anita D. Flournoy
Franklin Philanthropic
Foundation

Dr. Lucy Freund
Scott George
Nancy S. Gerrie
Lynn Gilchrist
Cindy Gilmore
Alfred & Hope[°] Goldstein
Jerry Goodman
Dr. Ruth Grant &
Dr. Howard Schwartz
Ilene Grossman &
Bruce Amsterdam[°]
Dévora Grynspan & Sam Stupp
Donald Haider
Ms. Elizabeth Hoffman
Sandra Hoffman
Mr. & Mrs. R. Thomas Howell, Jr.
Ronald & Bett Jacquart
Ms. Cynthia J. Jameson
Norman Jeddeloh
Jerry & Judy Johansen
Charlie Johnson
Maryl R. Johnson, M.D.
Mr. & Mrs. Thomas Johnston
Drs. Perry & Elena Kamel
Anne Kaplan
Wayne S. & Lenore M. Kaplan
Mr. & Mrs. Dan Kearney
Mary Klyasheff
Vincent & Pauline Ko
Gera-Lind Kolarik
Erica Kuhlmann
Lisa and Victor Nemeroff
Foundation
Frederic Lane
Andrea & Ethan Lathan
Mr. & Mrs. Young I. Lee
Donna & Alan Leff
Jeffrey & Elise Lennard
Mr. & Mrs. Thomas M. Leopold
Robert Levinson & Laura Sage
Knox & Gabrielle Long
Michael LoVallo, Esq.
Ms. Kurtice C. Luther
Gary MacDougall
William Mason & Diana Davis
Marilyn McCoy &
Charles R. Thomas
William Mond
Mr. Steven Morris
Elaine T. Newquist
Gayla & Ed Nieminen
Zehava L. Noah
Janis Wellin Notz &
John K. Notz, Jr.
Abby McCormick O'Neil &
D. Carroll Joynes
Penny J. Obenshain
Stephanie & Michael Oettinger
Marjory M. Olier
OPERA America
Joan L. Pantsios
Dr. Pat & Lara Pappas
Michael Payette

Joseph & Golnar Phillips
John J. W. Plampin
John & Jeaneane Quinn
Dr. & Mrs. Don Randel
John Reppy
Ms. Enid Rieser
Thomas & Barbara Rosenwein
Susan B. Rubnitz
Sharon Salveter &
Stephan Meyer
Anthony & Kathleen Schaeffer

Carnot & Luceile Allen
Foundation
Robert Altenbach
Ms. Jill Althage
Anonymous
John Amboian
David Anderson
Robert C. Anderson
Doris W. Angell
Drs. Vijayalakshmi &
Bapu Arekapudi



Lyric Opera of Chicago constantly thrills,
with world-class productions and artists
of the highest caliber, like few other arts
organizations.”

Bill K.

Sara S. & Steven C. Schumann
Frederic & Arleen Schwartz
Jane Shapiro
Mrs. Charles Shea
JS Charitable Trust
Allen & Caroline Shoenberger
Margles Singleton
Eric Smith & Kim Taylor-Smith
Dr. & Mrs. Eric M. Spratford
Dave Sproat
Dr. & Mrs. Lawrence A. Sterkin
James Talano
Myron & Karen Hletko Tiersky
Gayle & Glenn R. Tilles
Manuel S. Valderrama
Peter M. Vale
A & T Vavasis Philanthropic
Fund
Dr. Annabelle Volgman
Mr.[°] & Mrs. James Wees
Tamra & Jack Weiss
Manfred Wendt &
Eliana Gianfelice
Mr. Richard Wren
Michael & Jessica Young
Miroslaw Zienkiewicz

AFICIONADO**\$1,000 to \$1,999**

Anonymous Donors (21)
Andrew Abbott &
Susan Schlough
AbbVie
Ann Acker
David R. Adler
Robert Albert
Mr. Charles Alcaraz &
Dr. Liana Tremmel

Kathleen Arthur &
Stephen Wood
Susan Bailey
Michael Baldi & Lauren Edson
Dorothy Barmann
Dr. Shirley & Richard[°] Baron
Robert S. Bartolone
Mr. & Mrs. Robert G. Baum
Priscilla & Anthony Beadell
Daniel J. Bender
Mrs. Joan Berger
Dr. Leonard & Phyllis Berlin
Dr. Louise Bernard
Jane Berry
Kyle & Marge Bevers
Leigh & Henry Bienen
Mr. & Mrs. John Bienko
Donald Bishop & Phyllis
Hollander
Richard Blackwell &
Linda Christianson
Georgia Blalock
D. Jeffrey[°] & Joan H.
Blumenthal
Norman & Virginia Bobins/
The Robert Thomas Bobins
Foundation
Philip Bohlman &
Christine Wilkie-Bohlman
Leah J. Bolek
Joshua Bone
Donald F. Bouseman
Michael Bradie
Marlene Breslow-Blitstein &
Berle Blitstein
Daniel A. & Leona B.[°]
Bronstein
Robert Brown

[°]Deceased

Daniel & Debra Brownstone
 Mr. Anthony Bruck
 Bonnie Bush & John Peart
 Ms. Pamela A. Cabeen
 Mary Ellen Cagney
 Jacquelyn Campagnolo
 Timothy & Mary Carew
 Walter & Nancy Carlson
 James W. Chamberlain
 Mr. Rowland W. Chang
 Marsha Clinard &
 Charles Boast
 Margery & Robert Coen
 Dr. Thomas Conner
 John Connolly Jr
 William Copper
 Joseph Corrigan
 Jeff Counts & Hillary Hahn
 Judith Crampton
 Donald & Janis Crego

Mr. William R. Fenner
 J. Mark & Laura Fisher
 Marilyn E. Fites
 Thomas & Lois Flanders
 R. Michael Flores, MD &
 Alan Grigg, MD
 Dr. Nona Flores Ph.D.
 Mr. Lance Fortnow
 Eloise C. Foster
 James & Leslie Foster
 Penny & John Freund
 Ms. Phyllis Funkenbusch
 Karl-Heinz Gabbey
 John Anthony Gable &
 Zoe Quan
 Mr. & Mrs. Dale J. Garber
 John & Dorothy Gardner
 Stephen & Elizabeth Geer
 John & Florence Gepson
 Gregory Geuther

Mr. & Mrs. Edward Hartigan
 Ms. Amy Harwood &
 Mr. Evan Harwood
 Mr. & Mrs. Thomas Z. Hayward
 Sheila Ann Hegy
 Benjamin Heidlage
 Angeline Heisler
 Robert Heitsch
 Kimberlee S. Herold
 Edward C. Hirschland
 Geoffrey & Linda Hirt
 Emily Ho
 George R. Honig, M.D. &
 Olga Weiss
 Larry & Ann Hossack
 Carrie & Gary Huff
 Mr.° & Mrs. Peter Huizenga
 Scott Ipsen
 Hiromi Ishikawa
 Mitchell Jackson
 Kirk, Cheryl & Hannah Jaglinski
 Mr. & Mrs. Paul A. James
 Judy Hughes Janowiak
 Paul Jaskot &
 Robert Buerglener
 Ansuk Jeong
 Walker & Carolyn Johnson
 Barbara Jones
 Michael Kalata
 Mrs. Carlen L. & Dr. Robert S.
 Katz
 Mr. Peter Keehn
 Larry M. Keer, M.D.
 Elizabeth Wendt Kellar
 Mr. Jeffrey Kerr
 Mr. Basil Kezios &
 Mrs. Carole L. Heiman-Kezios
 Jane E. Kirtley
 Mr. & Mrs. Thomas L. Kittle-
 Kamp
 Michael Kivi
 Diane F. Klotnia
 Jim Kochalka
 Roger & Diane Koenker
 Judith Kolata
 Peter Koletsos
 Ms. Constance Kozikowski
 Michael Krco
 Nancy Krippel
 Richard Kron &
 Deborah Bekken
 Mr. & Mrs.° Jordan Krugel
 John C & Carol Anderson Kunze
 Markian J. Kuzycz, MD
 Laimonis & Kristina Laimins
 Dr. Melissa Lamar
 Elisabeth M. Landes
 Donald & Gloria LeBoyer
 Eugene & Maureen Lee

Eileen Leiderman &
 Ben L. Brener
 Laurence Leive
 Dr. & Mrs. Peter Letarte
 David Levinson & Kathy Kirn
 Catherine Lewis
 Ms. Elisabeth Lewis &
 Mr. John J. Lewis
 Eva Lichtenberg &
 Arnold Tobin
 Al & Patricia Linnerud
 Bonnie & Jay° Lipe
 Lawrence Lipking
 Peter Litton
 Lloyd R. Loback
 Tina Lubrano
 John Lucas
 Wayne R. Lueders
 Dorette P S Luke
 B. Tracy & Fred° Madison
 B. Tracy Madison
 Jeffrey & Paula Malak
 Stephen Mannasmith
 Zachary Mark
 Mr. & Mrs. Ronald Martin
 Jeordano Martinez
 Suzanne Maso
 Anna Mattson
 Samir Mayekar
 Dr. & Mrs. John E. Mazuski
 Bernadette McCarthy
 William° & Jeanine McCole
 James McCormack
 Peter McCullagh
 Sherry McFall & Kenneth
 Porrello
 Penny McGuire &
 Richard Smith
 Carol McManus
 Leoni Zverow McVey &
 William McVey
 Mr. & Mrs. Leland V. Meader
 Robert Meister
 Ms. Nancy Meyerson
 William Miceli &
 Cindy Nowinski
 Michuda Construction, Inc.
 Vee Minarich
 David & Justine Mintzer
 Robert & Lois Moeller
 Phillip Moll
 Mark Moore
 Lloyd Morgan
 Robert J. Moriarty
 John S. Mrowiec &
 Dr. Karen L. Granda
 J. Thomas Mullen
 Dr. John S. & Nan D. Munn
 Mr. George Murphy
 Jeanette Murphy



We love opera, and we mostly love Lyric,
 which we want to thrive.”

Rick W.

John & Karen Crotty
 Robert Curley
 David Curry
 Czarkowski Family
 Silvija & John Danielson
 Marietta Dean-Weston
 Jon & Eleanor DeMoss
 Charles & Lisa Dent
 Rosanne Diamond
 Lyn Dickey
 Mariclaire & Lowell Dixon
 Ruth & Joseph Doninger
 Mr. & Mrs. Ramsey B. Donnell
 Maureen Dooley
 Ms. Jill Dougherty
 Tom Draski
 Paul E. Drennan 1
 Mr. & Mrs. Elliott E. Dudnik
 Ms. Roma Dybalski
 Dr. Sherry Rosalyn Eagle
 Adrienne Eckerling
 John Edelman &
 Suzanne Krohn
 Hugh & Jackie Edfors
 Robert Edger &
 Gunnbjorg Lavoll
 Peter Emery
 Paul Epner & Janet Gans Epner
 Evanston Chapter
 Henry & Elizabeth Feldman

Anna & Alexis° Giannoulas
 Gaylord & William Gieseke
 Mrs. Patricia Gill
 Jerome & Jamie° Gilson
 Mr. & Mrs. John Ginascol
 Gerald & Michal Ginsburg
 David L. Gitomer
 Pier Cristoforo Giulianotti
 Patricia Gladden
 Gregory & Kris Gleason
 Fred & Gloria Gleave
 Lynne Glovka
 Barbara & Norman° Gold
 Amy & Michael Gordon
 Motoko Goto
 Dr. Steven A. Gould
 Frank & Catherine Greer
 George Gross
 Robert Grover
 Gary Haase & Robin Campbell
 Christopher & Suzanne Hagen
 Carl Halperin
 Mr. Stephen Ham
 Jessica Hamill
 Thomas & Susan Hammerman
 Mr. Larry Hanes
 Michael Kenneth Hansen
 Sue Hanson
 Marilyn Harder
 Scott Harder

Sheryl Mylan Ph.D.
 Thomas Myles
 Donald Nathan, Esq.
 Harvey Nathan & Lisa Kohn
 Gilberto S. Neri Jr., M.D.
 Lenz & Eva Neuhauser
 Mrs. Anthony A. Nichols
 Nancy A. Nichols
 Andrew Noha
 Northfield Chapter
 Patricia Noska
 Jim & Gladys Nutt
 Dr. Dragic M. Obradovic
 Serdar Ogut
 Mr. Michael K. Oman
 Ms. Alexandra Oprescu
 Richard Osgood &
 Wendy Wasson
 Gerald L. Padbury
 Robert & Jill Paddock
 Luis A. Pagan-Carlo Fund of
 The Minneapolis Foundation
 Carl Palmer
 Robert Parris & Bradley Renner
 Robert Parsons
 Amy Patel
 Dorothy Patton
 Jerry & Barbara Pearlman
 S. & Jolanta Peckus
 Olga S. Peirce
 Geoffrey Pelz
 Matthias Grosse Perdekamp
 Adam Peterson
 Rita Petretti
 Lorna & Ellard Pfaelzer
 Lyneta Grap Piela
 Mrs. Carol Glass Pollock
 Chris & Michael Pope
 Mrs. Charlene Posner
 Shelley T. Powell
 Travis Powell
 Barry & Eunice Preston
 Chris & Elizabeth Quigg
 Roberta Lyn Anderson Rains
 Dorothy V. Ramm
 Dr. & Mrs. Pradeep Rattan
 Missy Ravid
 Ross & Mary Read
 Roseanne Zank Rega
 James T. & Karen C. Reid

Alicia & Myron Resnick
 Alexa Rice
 Mary Jo Rice
 Dr. & Mrs. Jared Robins
 Gabriel & Beth Rodriguez
 Anita Rogers
 Kathy Rojina
 Matthew Roob
 Babette Rosenthal
 Ron & Linda Rosenthal
 Anna Rosenzweig
 Dr. Marsha & Dr. Robert Rosner
 Bryan Ross
 Mrs. & Mr. Kay C. Rossiter
 Barbara Ruben
 Anthony & Charlotte Rusnak
 Louise Ryssmann
 Laura Sachs
 Mrs. Cari Sacks &
 Mr. Michael Sacks
 Carol Sonnenschein Sadow
 Judith Sandstrom & Peter Kohn
 JF Sarwark MD & Ann Herring
 Robert & Mary Ann Savard
 Mrs. Rosita M. Schloss
 Nancy Schmitt
 Dean & Mary Schraufelg
 Edward & Irma Schwartz,
 Michael Schwartz, Lisa
 Schwartz, David Schwart
 Arvin Scott
 Mr. & Mrs. John E. Scully
 Dr. Itai Seggev &
 Dr. Dara Goldman°
 Laurence & Deborah Segil
 Mrs. Betty Seid &
 Mr. Richard Seid
 Leslie Settle
 David Shapiro
 Myron & Beverly Shapiro
 Christine Sheremeta
 David Sherman
 Eun Shim
 Deborah Shores
 Carolyn M. Short
 Bill & Harlan Shropshire
 Dr. & Mrs. Kenneth Siegel
 Mr. & Mrs. Thomas A. Silberman
 Michael Singleton
 Donald Skoglund

Lydia Skurski
 Arthur B. Smith, Jr. &
 Tracey L. Truesdale
 Barbara Smith &
 Timothy Burroughs
 Mr. Reeves E. Smith
 David & Susan Snyder
 Michael & Donna Socol
 Mr. & Mrs. Bob D. Sofil
 Dr. Keyoumars Solanti
 Dr.° & Mrs. Hugo Sonnenschein
 Seth Sonstein



I appreciate the excellence of Lyric performances and want to ensure that audiences in the future will be able to enjoy them and be enriched by them."

Beverly C.

O. J. & Angeline Sopranos
 Robert & Carole Sorensen
 Mark Stearns
 Robert & Sandra Stein
 Scott G. & Beth F. J. Stephenson
 James Stirling
 Christopher Straus
 Barbara Sturges
 Susan C. Taylor
 Mr. & Mrs. Terrence Taylor
 John & Catherine Terdich
 Cheryl L. Thaxton
 Judith B. Thomas
 Thomas B. Thuerer
 Eleanor & William° Tippens
 Joanne Tremulis
 Rheal & Denise Turcotte
 Eric Vaang
 Sharon Van Dyck
 Elizabeth Van Ness
 Marlene A. Van Skike
 David & Lorraine Vander Ark
 Dr. & Mrs. Eladio A. Vargas
 Henrietta Vepstas
 Raita Vilnins

John N. Vinci
 Ms. Lidia B. Vitello
 Mrs. Barbara Vlack
 Robert & Camille Von Dreele
 Stephen & Aida Wahmann
 Ms. Lucinda Wakeman
 Douglas & Priscilla Walter
 Gary & Mary Walther
 Louella Ward
 Patricia Webb
 Louis Weber
 Sevena & Erwin Weil

Richard & Karen Weiland
 Susan & Arvin Weindruch
 Dr. & Mrs. Dennis K. Wentz
 Dr. & Mrs. Robert D. Wertz
 Ms. Suzanne K. Westerhold
 Patricia H. & William H. Wheeler
 Denise Wild
 Harold & Benna Wilde
 Mr. & Mrs. Richard Williams
 James L. Wilson & Pamela D.
 Toler
 Roger Wilson
 Chuck & Sallie Wolf
 Christopher & Julie Wood
 Susan & Larry Yellen
 Dr. Robert G. Zadylak &
 James C. Kemmerer
 Michael & Judy Zeddies
 William Ziemann
 Jack & Charlene Zimmerman
 John Zimmie &
 Linda Lewis Zimmie

Due to space limitations, we are unable to list all of the generous donors who support Lyric Opera of Chicago. We extend our heartfelt gratitude to each and every one who enables us to fulfill our mission.

This list includes donors whose gifts or pledges were received by December 1, 2025.

°Deceased

Commemorative gifts

Gifts of \$1,000 and above contributed in the name of a friend, loved one, or colleague are a unique expression of thoughtfulness.

IN MEMORY OF

Carl H. Albright
From Cynthia Albright

Lieselotte N. Betterman
From Kathleen Betterman

John R. Blair
From Barbara Blair

Willard J. Blix and Ursula S. Blix
From Petra Blix & Ben Gruber

Kay Bucksbaum
From Sylvia Neil & Daniel Fischel

Mary C. Campagnolo
From Jacquelyn & Peter Campagnolo

David Carpenter
From Orit Carpenter

John Crowe, IV (Jack)
From Lisbeth Stiffel

Peggy Crowe
From Sylvia Neil & Daniel Fischel, Melvin & Sue Gray, Lisbeth Stiffel

Sir Andrew Davis
From Erika Gross, Hiromi Ishikawa, John Nelson, Sara S. Schumann & Steven C. Schumann, Gordon & Carole Segal, Mary & Larry Selander, Jack & Tamra Weiss

Allan Drebin
From Howard & Judith McCue

Lois Dunn
From Kathleen Dunn

Lyn Corbett Fitzgerald
From Kieran, Desmond, & Mark Fitzgerald

Maureen Glassberg
From Evelyn Alter

Chris Goodman
From Matthew Roob

Howard Gottlieb
From Sylvia Neil & Daniel Fischel

Barbara Gould
From Evelyn Alter

Dietrich Gross
From Erika Gross, Lisbeth Stiffel

Daniel Groteke
From Patricia Taplick

Jean W. Haider
From Donald Haider

Edwin E. Hicks
From Gregory Tabaczynski

Howard E. Jessen & Susanne C. Jessen
From the Jessen Family

William Laird Kleine-Ahlbrandt
From Sheila Hegy

Dr. Santos Ko
From Carl Palmer

George N. Kohler
From David Curry

Patricia Sawczak Kreider
From her loving husband Eldon Kreider

George Lerret
From Kirk Wyatt

Florence D. McMillan
From Phoebe McMillan

Armida Melone
From Bernadette McCarthy

David J. Nelson
From Dolores Nelson

Keith Olson
From Irmgard Olson

Peer & Sarah Pedersen
James & Elizabeth Bramsen

Lisandro & Soledad Peña
From Jeordano Martinez

Dr. William J. Pieper
From Katherine Knight

Ken Pigott
From Mariclaire & Lowell Dixon

Dr. Phyllis W. Shafron
From Andrea & Ethan Lathan

Deborah Sobol
From Rowland Chang

Tom Yu-Chern Su
From Sylvia Neil & Daniel Fischel

Helen D. Wallner
From Joseph & Elizabeth Wallner

Dr. Alan J. Ward, PHD ABPP
From Louella Ward

Richard H. Wehman
From Lisbeth Stiffel

Richard Welcome
From Marcia Welcome

Timothy M. Wendt
From Elizabeth Wendt Kellar

Edward T. Zasadil
From Larry Simpson

IN HONOR OF

Michael Black
From Irene Pritzker

John Coleman
From an anonymous donor

A.J. Coia
From Barbara Currie

Lester Crown — on his 100th birthday!
From John Byrne

Stephen Dunbar
From Tom Cleary

Audrey Fitzgerald
From Michael & Kimberly Moran

Sonia Florian
From an anonymous donor

Mary Galvin
From the GGE Foundation

Karen Gray-Krehbiel
From Ronald & Christina Gidwitz, Charles & Joan Moore, Penelope Steiner

Caroline & Charles Huebner
From Jonathan & Ela Lewis, Abby Funk

Elizabeth Hurley
From Harold & Benna Wilde

Lori Julian
From Ansuk Jeong and an anonymous donor

Neil Kawashima
From Bill & Kathryn Tyree

Meggie Keiser
From Ansuk Jeong

Theodore K.W. Luke
From Dorette Luke

Phil Lumpkin
From Helen Melchior

Armida Malone
From Bernadette McCarthy

Bill Mason
From Marilyn Fites

Bill Miller
From Gerald Padbury

Suzanne Mulshine
From Nancy Searle

Sylvia Neil
From Patrick & Shirley Ryan

Sue Niemi
From Olga Pierce

Susan Oliver
From Patrick & Shirley Ryan

Sondra Radvanovsky
From Karen Clausen

Raymond & Harriet Resnick
From Bonnie Ross

Patrick & Shirley Ryan
From Leigh & Henry Bienen

Shirley Welsh Ryan
From Ronald & Christina Gidwitz and Nancy Searle

Joseph O. Rubinelli, Jr.
From the Harold M. & Adeline S. Morrison Family Foundation

Mary Selander
From Abby Funk

Lena Reynolds Sneed
From Barbara Currie

Paul Sprecher
From Cathleen Cameron and Barbara Currie

Penelope Steiner
From Ginger Griffin, Robert W. Parris & Bradley Renner, Robert Levinson & Laura Sage, Helen Zell

Lisbeth Stiffel
From Abby Funk, R. & Karen Howell, Charles & Caroline Huebner

The Women's Board
From Karen Gray-Krehbiel & John Krehbiel

This list includes donors whose gifts or pledges were received by December 8, 2025.

*Deceased

Artistic roster

SOPRANOS

Amanda Batista
 Laura Benanti
 Ellie Dehn
 Adia Evans
 Renée Fleming
 Karen Chia-Ling Ho
 Jennifer Holloway
 Alexandra Loutsion
 Ana María Martínez
 Sondra Radvanovsky
 Alexandra Razskazoff
 Gabriella Reyes
 Emily Richter
 Karah Son
 Jacquelyn Stucker
 Kara Shay Thomson
 Elena Villalón

MEZZO-SOPRANOS

Tanja Ariane Baumgartner
 Nozomi Kato
 Sabina Kim
 Daniela Mack
 Catherine Martin
 Yulia Matochkina
 Cecilia Molinari
 Alexis Peart
 Zoie Reams
 Camille Robles
 Stephanie Sánchez

CONTRALTO

Lauren Decker

COUNTERTENOR

Ryan Belongie
 Key'mon W. Murrell

TENORS

SeokJong Baek
 Zhengyi Bai
 Brad Bickhardt
 Jordan Lee Braun
 Bille Bruley
 Ryan Capozzo
 Daniel Luis Espinal
 Evan LeRoy Johnson
 Brandon Jovanovich
 Anthony León
 Matthew Polenzani
 Rodell Rosel
 Cameron Schutza
 Victor Starsky
 Eric Taylor
 Russell Thomas
 Travon D. Walker

BARITONES

Aleksey Bogdanov
 Alfredo Daza
 Rod Gilfry
 Sankara Harouna
 Sihao Hu
 Quinn Kelsey
 Brian Stokes Mitchell
 Zachary Nelson
 Ian Rucker
 Hugh Russell
 Finn Sagal
 Daniel Scofield
 Luke Sutliff

BASS-BARITONES

Nicholas Brownlee
 Federico De Michelis
 Jongwon Han
 Christopher Humbert, Jr.
 Benjamin R. Sokol
 Alfred Walker

BASS

Scott Conner

CONDUCTORS

Rob Fisher
 Domingo Hindoyan
 Roberto Kalb
 Enrique Mazzola
 Tomáš Netopil

DIRECTORS

Julia Burbach
 Michael Cavanagh
 Lorena Maza
 Peter McClintock
 David McVicar
 Elijah Moshinsky
 Matthew Ozawa
 Roy Rallo

CHORUS DIRECTOR

Michael Black

CHOREOGRAPHERS & MOVEMENT DIRECTORS

Andrew George
 Jo Meredith
 Emily Piercy
 August Tye

ASSOCIATE DIRECTORS

Melanie Bacaling
 Jordan Lee Braun
 Jonathon Loy

FIGHT DIRECTORS

Chuck Coyl
 Samantha Kaufman
 Andrew Rathgeber
 Denise Serna
 Sheryl Williams



The American Guild of Musical Artists, AFL-CIO (AGMA), is the union that represents the singers, dancers, actors, and staging personnel at Lyric Opera of Chicago.

Lyric Staff

LYRIC OPERA OF CHICAGO

John Mangum,

General Director, President
& CEO, The Women's Board
Endowed Chair

Enrique Mazzola,

Music Director, The John D. and
Alexandra C. Nichols Endowed
Chair

Vincente F. Milanti,

Chief Financial and
Operating Officer

Matthew Ozawa,

Chief Artistic Officer

Jennifer E. Boyd, Vice President,

People & Culture

Bradley Dunn, Vice President,

Marketing and Communications

Stephanie Karr, Vice President,

Artistic Operations &
Administration

Anna Mattson, Vice President,

Development

Andreas Melinat,

Vice President, Artistic Planning

Dan Novak, Vice President and

Director, Ryan Opera Center,
The Ryan Opera Center Board
Endowed Chair

Will Raj, Vice President,

Information Technology

Michael Smallwood,

Vice President, Production and
Technical Director, Allan and
Elaine Muchin Endowed Chair

OFFICE OF THE GENERAL DIRECTOR

John Mangum,

General Director, President
& CEO, The Women's Board
Endowed Chair

Erika Senase, Executive Assistant,

Offices of the General and Music
Directors

ARTISTIC

Matthew Ozawa,

Chief Artistic Officer

Michael Black, Chorus Director and

Head of Music, The Howard A.
Stotler Chorus Director Endowed
Chair

Artistic Planning

Andreas Melinat, Vice President,

Artistic Planning

Jeremy Johnson, Manager,

Artistic Planning

Evamaria Wieser,

Casting Consultant

Artistic Operations &

Administration

Stephanie Karr,

Vice President, Artistic Operations &
Administration

Katharine Gunnink,

Director of Company Management

Brittany Nelson,

Director, Music Administration

Sarah Cohn,

Manager, Music Administration

Annika Donnen,

Managing Librarian

Markie Gray,

Artistic Finance Manager

Christine Janicki,

Orchestra Personnel Manager

Kevin Krasinski, Manager, Artistic

Operations and Systems

Leo Barnard

Jovon Eborn

Nick Kemp

Meg Plunkett,

Company Management Assistants

RYAN OPERA CENTER

Matthew Ozawa,

Chief Artistic Officer

Dan Novak, Vice President and

Director, Ryan Opera Center,
The Ryan Opera Center Board
Endowed Chair

Craig Terry, Music Director, The

Jannotta Family Endowed Chair

Julia Faulkner, Director of Vocal

Studies

Logan Skirm, Manager

LYRIC UNLIMITED - LEARNING & CIVIC ENGAGEMENT

Matthew Ozawa,

Chief Artistic Officer

Jill LeCesne Potter, Senior Director,

Learning Programs

Sheran Goodspeed Keyton,

Director of Civic Engagement

Elise LaBarge, Learning Programs

Manager

ADVANCEMENT

Development

Anna Mattson, Vice President,

Development

Lawrence DelPilar, Senior Director,

Development

Scott Podraza, Senior Director,

Development

Bryan Hulscher, Senior Philanthropy

Officer, Institutional Partnerships

Claire Ryan, CFRE, Director,

Development Operations

Patrick Rybarczyk,

Senior Philanthropy Officer

Paul D. Sprecher,

Senior Philanthropy Officer

Sarah Sullivan, Senior Philanthropy

Officer

Bridget Brazeau, Philanthropy

Officer

Kassandra Hernandez, Development

Operations Manager

Meggie Keiser, Associate Director,

Donor Engagement

Tara Lenardi, Grants Manager

Leta Mumgaard,

Manager, Board of Directors

Gracie Denton Echales,

Development Associate

Will Ellis, Associate, Boards

(Women's Board and Ryan Opera
Center Board)

Jonah Levi-Paesky, Associate,

Volunteer Boards and Engagement

(Guild Board, Chapters, and Lyric

Young Professionals)

Griffin Scott, Coordinator, Donor

Engagement

Margaret Smith, Coordinator,

Donor Services

Kenni Ther, Coordinator, Donor

Services

Mike Biver, Senior Director of

Gift Planning

Jonathan P. Siner, Senior Director of

the Ardis Krainik Society

Megan Morton, Associate Director,

Gift Planning

Zakia Frontz, Director, Special

Events

Allison VerSteegh,

Manager, Events

Ryan Morgan, Special Events

Associate

Raina Chaber-Tully, Coordinator,

Boards & Events

Stefan Peters, Maître d'

Marketing and Communications

Bradley Dunn, Vice President,

Marketing and Communications

Tracy Gallagher Young, Senior

Director, Marketing and

Audience Development

Brittany Gonzalez Camuy,

Director of Group Sales and
Partnerships

Elisabeth Madeja, Director of Sales

& Advertising

Michael Musick,

Director of Digital Marketing

Tasha James, Marketing Manager,

Discover Lyric Programs

Jessica Pedroza, Marketing Project

Manager

Samantha Roetter,

Manager of Website Content and
Digital Experience

Kitty Schwartz, Digital Marketing

Manager, Fundraising

Gavyn Stich, Marketing Manager,

Data & Analysis

Jake Friend, Manager, Art Direction

& Visual Identity

Kendall Hicks, Group Sales &

Partnership Associate

Victoria Pizzuto, Marketing

Associate, Advertising &

Promotions

Deb Song, Senior Director, PR,

Communications, and Content

Michael Solomon,

Director of Media Relations

David Zivan, Lead Writer & Editor

Alana Guggenheim,

Public Relations Manager

Amanda Reitenbach, Manager

of Social Media and Content

Andrew Cioffi,

Digital Content Producer

Shannan Moore,

Digital Marketing Associate

Janie Ragsdale, Marketing and

Public Relations Coordinator

Gregg Brody, Box Office Director

Alexandros Chatziapostolou

Richard Diver

David Fitzgerald

Destiny Mack

Matthew Maggione

Jessica Reinhart

Allan Waite

Laura Waters,

Box Office Treasurers

Ticketing Department/ Audience Services

Susan Harrison Niemi, Senior

Director of Audience Services

Regina Ceragioli, Sales Manager,

Customer Service & Call Center

River Donnelly, Manager, Tessitura

& Ticketing

Celia Williams, Manager,

VIP Ticketing and Inventory

Stephen Clark, VIP Ticketing

Associate

Zachary Adams

Marnie Baylouny

Kathy Butera

Colin Commager

Hannah Cremin

Madeline Curtin

Toby Everhart

Sophia Formella

Wesley Jones

Maria Kluber

Laura Osterlund

Eric Perrine

Joseph Ryan

Ryan Saladin

Avery Sujkowski

Danielle Vallandigham,

Ticket Staff

ADMINISTRATION

Vincente F. Milanti,

Chief Financial and Operating
Officer

Finance

Whitney Bercek, Controller

LaToya Bowen, Senior Treasury

Analyst

Erin Johnson,

Director of Financial Planning &
Analysis

Justin Mascarenas, Assistant

Controller

Nayeli Herrera, Senior Accountant

Idalia Andrade,

Accounts Payable Manager

Faye Eisenberg, Staff Accountant

Zachary Kurzenberger, Senior

Financial Analyst

Angela Coleman,

Accounts Payable Associate

Eddy Hadzimuratovic,

Accounts Payable Associate

Celia Hernandez, Financial Analyst

People & Culture

Jennifer E. Boyd, Vice President,

People & Culture

Joshua Carroll, Director,

Environmental Health, Safety,

and Compliance

Crystal Riley, Payroll Director

Charity Franco, Manager, People &

Culture Operations

John Dorn, Union and Payroll

Benefits Associate

Camilla Fernandez, Talent

Management Associate

Kristy Le, Employee Engagement

Coordinator

Megan St. John, Director, Venue &

Guest Services

Lena Sneed,

House Manager

Richard Berry,
Coat Check Attendant

Paulette Alonzi
David Barcena
Thomas Brame
Chenise Brown
Nila Cabrejos Lau
Daro Cook
Chaurita Davis
Nathalea Espinosa
Matthew Furjanic
Sharon Gaston
Ramona Hawkins
Gina Jacobs
Morgan Jones
Samuel Lee
Marlyn Love
Jacob Malkinson
Esmeralda Mendez
Lonnie Mitchell
Steven Pace
Ana Luisa Décaro Pinto
Eduard Pulst
Jazmin Reynoso
Sylvie Rood
John Rosenthal
Edwina Schorn
Mary Thomas
Adam Wang,
Ushers

TJ Gordon, *Concessions Manager*
David Jaworski, *Assistant Concessions Manager*

John Ambrose
Alyssa Bisanz
Katherine Ciesla
Joshua Galan
Sylvia Hernandez
David Jaworski
Anne Kuntz
Ashley Manley
Ramon Alex Perez
Julia Pestrikova
Stephen Skleba
Juliet Smith
Anthony Sullivan
Benjamin Tengowski
Felipe Valadez
Lindsey Wolfeld,
Bartenders/Barbacks

Ramon Alex Perez
Felipe Valadez,
Porters

Patrick Dowling,
Head of Security

Ellen Pomes
Cesar Galan,
Security Services

Esteban Alegria
Joe Doner
Cesar Galan
Collin Harvey
David Jaworski
Jessica Plummer
Ellen Pomes
Emmanuel Stewart
Cameron Truelove,
Stage Door Staff

Information Technology
Will Raj, *Vice President, Information Technology*
Eric Hayes, *Senior Director, IT Operations*
Rita Parida, *Senior Director, Data Services*
Bill Anderson, *Senior Systems Administrator*
Bob Helmuth, *Systems Administrator*
Jessica Keener, *Systems Analyst*
Michael Pierce, *Technology Support Specialist*
James Webb, *Junior Technology Support Associate*

Facilities
Michael Smallwood, *Vice President, Production and Technical Director, The Allan and Elaine Muchin Endowed Chair*
John Yelen, *Senior Director of Facilities*
Joe Minogue, *Chief Engineer*
Michael LaPorte, *Lead Engineer*

Phillip Casica
Anthony Fasano
Brian Laurence McMahon
Bernard McNeela
Kevin O'Keefe
Thomas Setina
Eric Zawaski,
Engineers

TECHNICAL & PRODUCTION
Vincente F. Milianti, *Chief Financial and Operating Officer*

Technical
Michael Smallwood, *Vice President, Production and Technical Director, The Allan and Elaine Muchin Endowed Chair*
April Busch, *Technical Operations Director*
Maria DeFabo Akin, *Production Design Director*
Scott Wolfson, *Associate Technical Director*
Brendan Henry, *Technical Finance Manager*
Kathryn Johnson, *Associate Properties Director*
Chris Maravich, *Lighting Director, Mary-Louise and James S. Aagaard Lighting Director Endowed Chair*

Benjamin McCormack, *Assistant Technical Director*
Sarah Riffle
Bridget Williams,
Assistant Lighting Designers

Joe Dockweiler,
Master Carpenter
Mike Reilly, *Head Flyman/ Automation*
Chris Barker
Robert Hull, Jr.
Connor Ingersoll
Chase Torringa, *Rigging/ Automation Assistants*

Phil Marcotte, *Head Shop Carpenter*
Brian Grenda, *Layout Carpenter*
Drew Trusk, *Head Shop Welder*
Luigi Trupiano, *Layout Welder*
Dan DiBennardi,
Warehouse Coordinator
Dan Donahue
Ryan McGovern
Jeffrey Streichhirsch,
Assistant Carpenters
Anthony Bernardy
John Ingersoll
Aiden McGovern
Rory McQuillan
Dylan O'Shea
Tyler Gil Ramos
Jacob Sullivan
Brian Walsh
Isaiah Williams,
Carpenters

Anthony Coia,
Master Electrician
Soren Ersbak,
Board Operator
Jose Villalpando,
Titles Operator
John Clarke, Jr.
Thomas Hull
Dan Kuh
Robert Reynolds,
Assistant Electricians
Martin Childress
Jason Combs
Thomas Fernandez
Nicholas Gutierrez
Daniel Hull
Jose Villalpando
Daniel Vuillaume,
Electricians

Nick Charlan,
Head Audio Technician
Matt Eble, *FOH Engineer*
Asiel Simpson
Matt Swiatkowski
Monitor Engineers

Bob Ladd,
Property Master
Bob Hartge, *Properties Crew Head*
Gordon Granger,
Prop Carpenter
Frank McPartlin, *Armorer*
Rachel Boultinghouse,
Upholsterer

Kevin McPartlin
Ian Scarlato
Taylor Torringa
Assistant Properties

Joshua Dobbins
John Kopecky
Ryan Lin-Peistrup
Michael O'Donnell, Jr.
Johnny Rivers
Drew Scafi
James Ullrich
Properties
Michael Besancon,
Charge Artist
Michael Murtaugh
Scenic Artist
Alyssa Mohn, *Scenic Artist Apprentice*

Kim Buetzow, *Costume Director, The Richard P. and Susan Kiphart Endowed Chair*
Lucy Lindquist,
Wardrobe Mistress

Lauren Crotty
Ellouise Davis
Nina Escobedo
Molly Herman
M. Kate Keefe Marcheschi
Cecylia Kinder
Bryan McDonald
Kathy Rubel
Herbie Ruiz
Marguerite Scott
Ewa Szyrak
Michelle Tan
Maggie Zabierowski,
Costumers

Katelynn Barker
Louie Barrios
Samantha Holmes
Krystina Lowe
Joanna Rzepka
Sarah Santiago
Kate Shattock
Isaac B. Turner,
Production Administrators

Samantha Holmes,
Wardrobe Crew Head

Brigid Brown
Lauren Crotty
Nina Escobedo
Eric Guy
Dawn-Marie Hamilton
Mary Luchsinger
Wendy McCay
Maira O'Neil
Christopher Provyn
Sarah Santiago
Dulce Santillán
Roger Weir
Dressers

John Metzner, *Wig & Makeup Designer, The Marlys A. Beider Endowed Chair*
Necole Bluhm,
Department Coordinator
Lynn Koroulis, *Shop Manager*

Brittany Powers, *Wig & Makeup Crew Foreman*

Victoria Ashmore
Martha Contreras
Krista D'Agostino
Eric Daniels
Nini Jenkins
Chantelle Johnson
Lauren Mateling
Melissa Musseau
Liv Roach
Becky Scott
Franni Valus,
Wig & Makeup Run Crew

Davis Campbell
Colin Grice
Chantelle Johnson
Katie Kurz
James Ogle,
Wig Shop Staff

Production
Rachel A. Tobias, *Production Stage Manager*

Katrina Bachus
Jordan Lee Braun
Adam Da Ros,
Assistant Stage Directors

Alaina Bartkowiak
Sandra Moore,
Stage Managers

Adrienne Bader
Alaina Bartkowiak
Alycia Martin
Sandra Moore
Tommy Novak
Daniel Sokalski
Peggy Stenger
Amy C. Thompson,
Assistant Stage Managers



Local 2: Stagehands

Local 476: Studio Mechanics

Local 769: Theatrical Wardrobe



Local USA 829 of the IATSE is the union representing scenic, costume, lighting, sound and projection designers in Live Performance

The Patrick G. and Shirley W. Ryan Opera Center identifies exceptionally talented emerging artists from around the world and provides them with comprehensive training and performance opportunities. On the world's stages, the Center's impressive roster of alumni continually proves the value of training at Lyric.



The 2025/26 Ryan Opera Center Ensemble

Sopranos

Adia Evans
Emily Richter

Mezzo-sopranos

Alexis Pearl
Camille Robles

Tenors

Daniel Luis Espinal
Travon D. Walker

Baritones

Sankara Harouna
Sihao Hu
Finn Sagal

Bass-baritones

Christopher Humbert, Jr.
Benjamin R. Sokol

Conductor

Chi-Yuan Lin

Pianist

Michael Banwarth

Stage Director

Marinette Gomez

Stage Manager

Gemma DeCetra

Kyle Flubacker

Front row, l to r: Emily Richter, Chi-Yuan Lin, Marinette Gomez, Gemma DeCetra, Adia Evans, Michael Banwarth, Finn Sagal, Alexis Pearl

Back row, l to r: Camille Robles, Travon D. Walker, Benjamin R. Sokol, Christopher Humbert, Jr., Sihao Hu, Daniel Luis Espinal, Sankara Harouna

Lyric

Ryan Opera Center

Ryan Opera Center alumni around the world

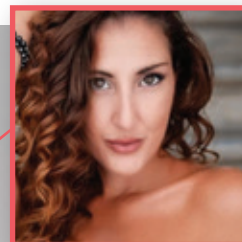
THIS SEASON



James Kryshak (2010-12)
Royal Ballet and Opera
Pong/Turandot



Lucy Baker (2023-25)
Deutsche Oper Berlin
Hippolyta/A Midsummer
Night's Dream



Maria Novella Malfatti (2020-22)
Teatro Municipale di
Piacenza (Italy)
Violetta/La traviata

PROGRAM STAFF

Administration

Dan Novak
*Director, The Ryan Opera Center
Board Endowed Chair*

Craig Terry
*Music Director,
The Jannotta Family
Endowed Chair*

Julia Faulkner
Director of Vocal Studies

Logan Skirm
Manager

Annika Donnen
Managing Librarian

Faculty

Julia Faulkner
*Vocal Instruction,
Robert and Ellen Marks Ryan
Opera Center Vocal Studies
Program Endowment*

Deborah Birnbaum
Renée Fleming
Dame Jane Glover
Enrique Mazzola
Gerald Martin Moore
Matthew Polenzani
Russell Thomas
Guest Master Artists

William C. Billingham
Alan Darling
Laurann Gilley
Susan Miller Hult
Noah Lindquist
Celeste Rue

Hugh Russell
Eric Weimer
Coaching Staff

Isabelle Druc
Julia Savoie Klein
Derek Matson
Morgan Stinson
Alessandra Visconti
Foreign Language Instruction

Paul Curran
Peter McClintock
*Acting and Movement
Instruction*

Orit Carpenter
Beth Clayton
Performance Psychology

Katrina Bachus
Louisa Muller
Rachel A. Tobias
Production Mentors

Artistic/Production Personnel

Enrique Mazzola
Donald Paulmbo
Conductors

Keturah Stickann
Director

Peggy Stenger
Stage Manager

Gabriela Lena Frank & Nilo Cruz

El último sueño de Frida y Diego

Mar. 21 - Apr. 4

How would you spend a single
day reunited with lost love?

lyricopera.org/frida

ROBERT AND PENELOPE
STEINER FAMILY FOUNDATION
2025/26 Presenting Season Sponsor

Lyric's presentation of Gabriela Lena Frank and Nilo Cruz's *El último sueño de Frida y Diego* is generously made possible by the Zell Family Foundation, the Pritzker Foundation, and Ethel Gofen. Lyric Opera of Chicago thanks its Official Airline, United Airlines, and acknowledges support from the Illinois Arts Council. *deceased
Photo: John Shaw/Lyric Opera of Chicago



Lyric
OPERA OF
CHICAGO

avery r. young

safronia

Apr. 17 & 18

Be the first to experience this
remarkable work by one of
Chicago's most exciting voices.

lyricopera.org/safronia

ROBERT AND PENELOPE
STEINER FAMILY FOUNDATION
2025/26 Presenting Season Sponsor

Lyric's presentation of avery r. young's *safronia* is generously made possible by the Pritzker Traubert Foundation. Lyric Opera of Chicago thanks its Official Airline, United Airlines, and acknowledges support from the Illinois Arts Council.

Photo: John Shaw/Lyric Opera of Chicago



Lyric
OPERA OF
CHICAGO

Beyond the stage, and beyond the boundaries that often define opera companies, Lyric is igniting creativity across Chicago. Through innovative learning opportunities, creative exploration, and artist and scholar residencies, Lyric, with your support, encourages students, educators, families, audiences, and Chicagoans from neighborhoods across the city to share their voices and embrace the power of opera as a catalyst for growth and change.



Opera in the Neighborhoods brings original works to the places where kids live and go to school.

Lyric

Lyric Unlimited: Learning and Civic Engagement

Going Strong

Opera in the Neighborhoods introduces young people to the art form — and, this season, to the history of women's rights.

By Janie Ragsdale

"We are delighted to offer students an opportunity to experience opera through the *Opera in the Neighborhoods* program," says Jill LeCesne Potter, Senior Director of Learning Programs for Lyric Unlimited. Through *Opera in the Neighborhoods*, Lyric brings the wonder of opera to young audiences outside the opera house, presenting live performances of youth-focused operas at venues across the Chicago area.

By bringing opera directly to students, *Opera in the Neighborhoods* ensures that audiences across a wide range of communities can enjoy and be inspired by live performances. Lyric Unlimited also offers many resources for teachers to bring the arts into the classroom and integrate production themes into their curriculum. All student performances are presented free of charge, reflecting Lyric's commitment to community engagement.

This season, *Opera in the Neighborhoods* returns with a tour of *Katie: The Strongest of the Strong*, a bold new opera for young audiences inspired by the life and legacy of circus strongwoman Katie Sandwina. Through the tour, Lyric Unlimited will introduce thousands of students in grades 3-6 to the magic of opera and the important history of women's rights through an inspiring true story of resilience, justice, and community.

Composed by Faye Chiao with a libretto by Anton Dudley, *Katie: The Strongest of the Strong* brings the true story of a powerful figure in women's history to the stage. Katie Sandwina — a legendary circus

strongwoman — earned the title of "the strongest woman in the world." She lived a life that defied the expectations for women of her time, not only performing as a strongwoman, but also being a wife, mother, and activist. Sandwina brought her incredible strength — and her voice — to the fight for women's rights, helping to lead the women's suffrage movement in the early 1900s.

A celebration of women's courage, strength, and confidence, *Katie: The Strongest of the Strong* includes an all-female cast. The *Opera in the Neighborhoods* tour features mezzo-soprano Lauren Ingebrigtsen — who also works with Lyric Unlimited as a teaching artist — taking on the role of "the strongest of the strong" as Sandwina. Ingebrigtsen, who this season worked with a class at St. Frances of Rome to create and perform an original opera as part of Lyric Unlimited's Elementary Opera Residency, brought lessons learned from teaching children in the classroom to her work performing for them on stage.

"You have to be attuned to and interacting with your audience, who may be unpredictable at times," she says. "Kids — and truthfully, any audience — will bring the vibe that you bring to them. If you are excited, they will be too. If you take something seriously, they will too," she explains. "This show has some heartfelt moments and a really timely message for young people, so even though it is a children's opera, the whole cast really treated it with the sincerity with which you'd treat something like *verismo*."





Playing the title role in *Katie: The Strongest of the Strong* was Lyric teaching artist Lauren Ingebrigtsen (above, in red), whose students gave her a warm welcome. The show will tour again this spring.

The fall stretch of the *Opera in the Neighborhoods* tour took place in October and November, bringing *Katie: Strongest of the Strong* across Chicago and the suburbs for nine student performances and one public performance. One was particularly special, as Ingebrigtsen's Elementary Opera Residency students from St. Frances of Rome were in attendance. After working to explore, understand, and create opera together, the class was able to attend a live opera performance, with their teaching artist in the leading role.

"I felt like I was Maria Callas! I have never had an audience cheer like that in all my life," Ingebrigtsen reflects on the experience. "The students were getting up, dancing, crying, laughing, clapping, and cheering any chance they got. Kids want to be a part of the opera and we get to give them that chance." This full-circle moment was a highlight for the Lyric Unlimited team who helped to make it happen, as well.

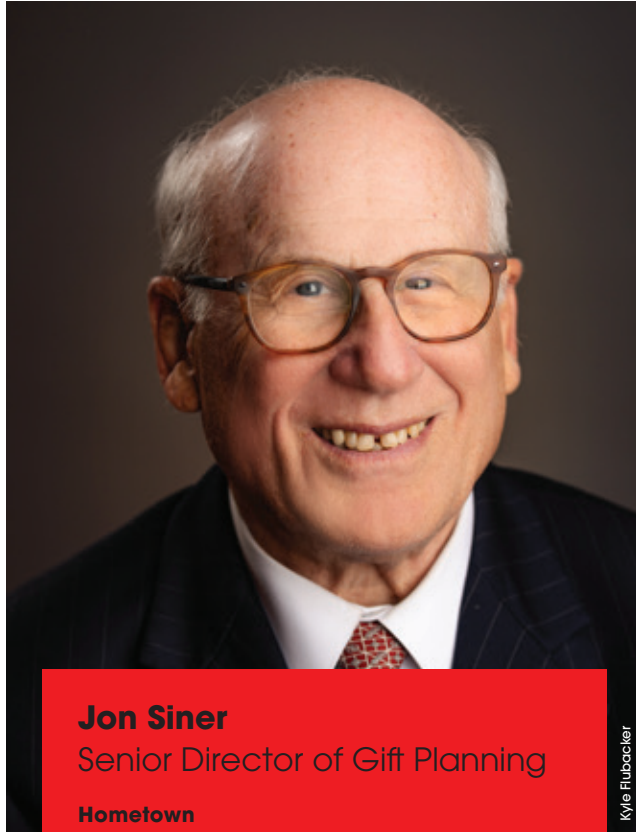
"It is always a meaningful opportunity for students to experience working with a teaching artist to bring an opera of their own creation to life. But for these students, watching their teaching artist in the role of Katie Sandwina was unforgettable," Potter says. "Seeing so many awestruck faces in the theater and hearing their cheers of 'Bravo!' for Lauren is something truly special."

The *Opera in the Neighborhoods* tour of *Katie: The Strongest of the Strong* continues this spring with several school and public performances, including two at Kennedy-King College on Saturday, May 2, 2026. [L](#)



People of Lyric

A behind-the-scenes conversation



Kyle Flubacker

Jon Siner

Senior Director of Gift Planning

Hometown

Cranston, Rhode Island

When did you start at Lyric?

I joined on June 30th, 1994. So I have worked under four General Directors — Ardis Krainik, Bill Mason, Anthony Freud, and now John Mangum.

First opera you saw in person?

Beethoven's *Fidelio* at the Florentine Opera in Milwaukee. It just happened to be what they were playing. I didn't choose it. But I was blown away by the whole experience in an opera house.

First opera at Lyric?

Boris Godunov. Opening night was Sam Ramey.

Favorite performer?

Jerry Hadley, who was one of Lyric's recurring performers when I started — a local favorite, who lived in Champaign-Urbana. He starred in *The Rake's Progress*, my second opera after I started at Lyric, which I had never heard of before. He performed in many of these rare operas at Lyric.

What was your path to working at Lyric?

After University of Wisconsin law school, I worked with the Attorney General in Wisconsin for 10 years. When Harold Washington got elected mayor of Chicago, they were looking for attorneys who had no connection to the Daley machine. They recruited me and I came down. And the first thing I did was subscribe to Lyric. I said, *Oh, my God, it's like I'm coming to Mecca*. I was doing litigation — heavy court work — and volunteering with the Lyric Lecture Corps, which doesn't exist anymore. Some bequests had fallen out of the sky, so Lyric was looking for someone to start a planned giving program. They knew they needed an attorney who could talk opera and I was probably the only person in Chicago (or the world!) who could do that. So they hired me!

Are you currently a practicing lawyer?

Oh, I always have been. If I need to appear in court on estates or represent Lyric, I can do it. You're always a lawyer!

When you started, was planned giving common?

I talked to everyone I could, just to learn about it. The CSO had a program, and the Art Institute, and the University of Chicago — I really got to know those three. Universities have been doing it for hundreds of years. When I started, there were about 75 planned gifts in a drawer someplace. Nobody had any details about them. So what did I do at the start? Everything. (We now have over 600 planned givers at Lyric.)

What is the most challenging aspect of your job?

The initial challenge is, of course, that you're dealing with a taboo topic — death and dying. But I have always looked at it as, *We're talking about celebrating you, and your incredible commitment to Lyric, while you're here*. It's a huge difference. This is why we have the Ardis Krainik Society luncheons. We're telling you now that we appreciate everything you do.

When did your love of opera begin?

The first opera I ever saw was the entire four-opera, 16-hour *Ring* cycle on public television, a broadcast from Bayreuth in 1982. I didn't even know what it was — and why would I want to watch some raving anti-Semite? I was hooked from the first chord. I've been to 12 *Ring* cycles. Every opera lover has a story like that. They went in and it opened up a part of their life they never knew existed.

Do you have a favorite moment at Lyric?

Catherine Malfitano in *Madama Butterfly*. I have never seen anything like it. I mean, it's a sad opera, but she just brought out how tragic the whole thing was. I took a friend who had never been to an opera. And she was in tears at the end. The whole house was sobbing. It was really incredible.

What should people know about what you do?

Lyric has to constantly plan for huge future projects. And if we want this to be around for our children and grandchildren and succeeding generations, we have to think about the funding. That's where these important gifts come in. I never cease to be amazed at how Lyric gives so much joy and satisfaction to people that they want to make sure we continue to present grand opera at the highest possible level. **L**